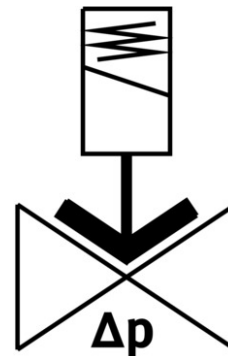



# Solenoid valve VZWM-L-M22C-G1-F5-R1

Part number: 546166

FESTO



 General operating condition

## Data sheet

Feature	Value
Design	Diaphragm valve servo-controlled
Type of actuation	Electric
Sealing principle	Soft
Mounting position	Preferably vertical
Type of mounting	In-line installation
Connection Process valve	G1
Electrical connection	Solenoid coil type MH-... , coil can be ordered as an accessory
Nominal size	25 mm
Valve function	2/2-way, closed, monostable
Flow direction	Non-reversible
Medium	Compressed air to ISO 8573-1:2010 [7:4:4] Inert gases Water Neutral fluids
Medium pressure, valve for liquid media	0.5 bar ... 6 bar
Medium pressure, valve for gaseous media	0.5 bar ... 10 bar
Pressure difference	0.5 bar
Type of piloting	Pilot actuated
Symbol	00995681
Max. viscosity	22 mm <sup>2</sup> /s
Media temperature	-10 °C ... 60 °C
Media temperature for fluids	5 °C ... 50 °C
Ambient temperature	-10 °C ... 60 °C
Flow rate Kv	10.7 m <sup>3</sup> /h
Standard nominal flow rate	11700 l/min
Switching time on	15 ms
Switch-on time for fluids	300 ms
Switching time off	12 ms
Switch-off time for fluids	950 ms

Feature	Value
b value	0.57
C value	41 l/sbar
Note on materials	RoHS-compliant
LABS (PWIS) conformity	VDMA24364 zone III
Material housing	Stainless steel casting
Material number housing	1.4581
Material seals	NBR
Material plunger tube	High-alloy steel
Product weight	1100 g
CE mark (see declaration of conformity)	In accordance with EU Pressure Equipment Directive
CE marking (see declaration of conformity)	to UK Pressure Equipment Regulations
Corrosion resistance class CRC	3 - high corrosion stress
Max. tightening torque for cover screw	30 Nm
Max. tightening torque for connecting thread	350 Nm
Max. tightening torque for coil fastening	2 Nm