

Suction cup B10-2 Chloroprene, M5 male

Article number: 3150023



- Suitable for level adjustment.
- Lifting movement to separate small and thin objects.
- Only lightweight objects should be handled when the lifting force is parallel to the surface.

Technical data

| Description | Unit | Value |
|--------------------------|------|---|
| Suction cup shape | - | Bellows |
| Application | - | Dry sheet metal, Plastic injection molded parts |
| Suction cup design | - | Round |
| Material | - | Chloroprene (CR) 60° Shore A |
| Weight, min. | g | 1 |
| Suction cup model | - | B |
| Volume | cm³ | 0.48 |
| Height | mm | 24.9 |
| Outer diameter, min. | mm | 11 |
| Outer diameter, actuated | mm | 12.5 |
| Fitting size | - | M5 |
| Fitting style | - | Male |
| Fitting type | - | M-thread |
| Material | - | CuZn |
| Suction cup model | - | B10-2 |
| Movement, vertical max. | mm | 4.5 |
| Curve radius, min. | mm | 4 |

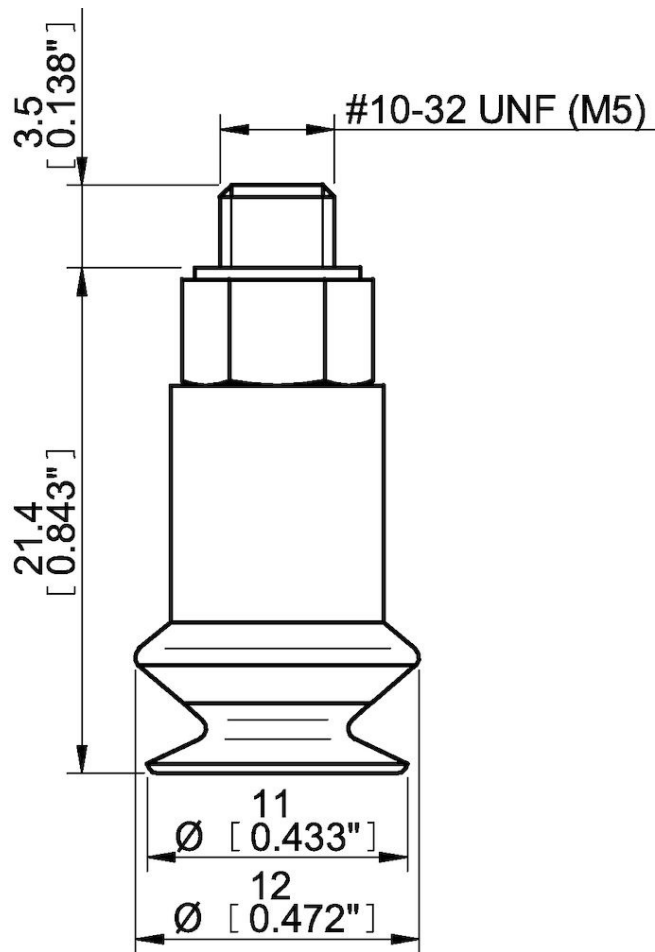
Performance - Lifting forces

| B10-2 | Vertical (N) | Parallel (N) |
|---------|--------------|--------------|
| 20 -kPa | 1.5 | 1.77 |
| 60 -kPa | 3.4 | 2.41 |
| 90 -kPa | 4.9 | 2.82 |

| | |
|------------------------|------------------------------|
| Material | |
| Name | Chloroprene (CR) 60° Shore A |
| Colour | Black |
| Temperature, min. °C | -40 |
| Temperature max. °C | 110 |
| Hardness °Shore A | 60 |

| | |
|----------------------------|-----------|
| Material resistance | |
| Alcohol | Good |
| Concentrated acids | Poor |
| Ethanol | n/a |
| Hydrolysis | Good |
| Methanol | n/a |
| Oil | Fair |
| Oxidation | Good |
| Petrol | Fair |
| Wear resistance | Excellent |
| Weather and ozone | Good |

Dimensional drawings



Values specified in this data sheet are tested at (unless otherwise stated):

- Room temperature (20°C [68°F] ± 3°C [5.5°F]).
- Standard atmosphere (101.3 [29.9 inHg] ± 1.0 kPa [0.3 inHg]).
- Relative humidity 20-70%.
- Compressed air quality, DIN ISO 8573-1 class 4.