

## Seal carrier assemblies DRS55145 (Series DRS)

for ZARF, ZARF...-L, with integral rotary shaft seal

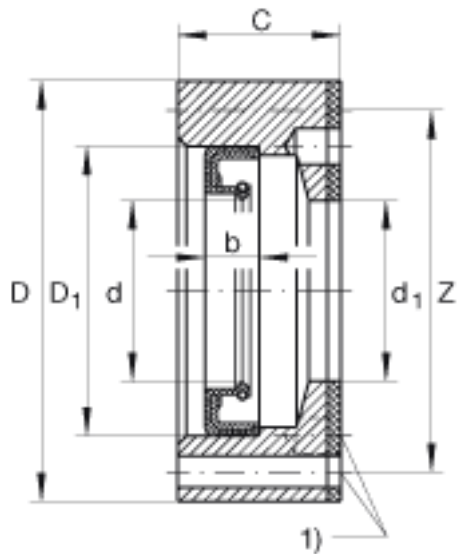
The datasheet is only an overview of dimensions and basic load ratings of the selected product. Please always observe all the guidelines in these overview pages. Further information is given on many products under the menu item "Description". You can also order comprehensive information via the Catalogue ordering system ([https://www.schaeffler.de/content.schaeffler.de/en/news\\_media/index.jsp](https://www.schaeffler.de/content.schaeffler.de/en/news_media/index.jsp)) or by telephone on +49 (91 32) 82 - 28 97.

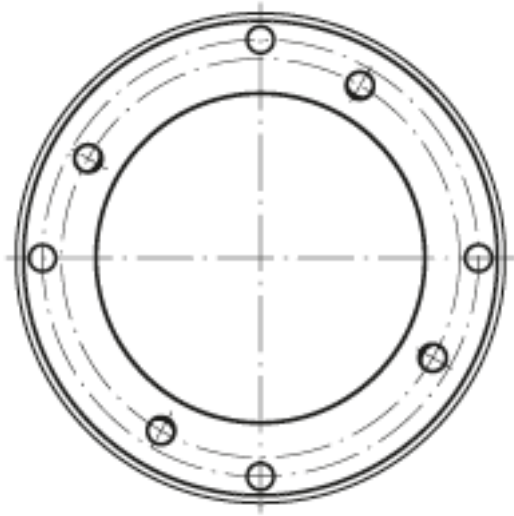
d <sub>1</sub>	100 mm	
D	145 mm	
C	30 mm	
1)	4 holes, offset by 90 degrees	
b	12 mm	
d	100 mm	
D <sub>1</sub>	120 mm	
Z	132,5 mm	4 holes, offset by 90 degrees
m	1,42 kg	Mass
	M5x40	Socket head cap screw to DIN 912

ZARF55145(-L)-TV Corresponding bearing in standard or L design

Delivery as individual parts:

- seal carrier,
- rotary shaft seal,
- gasket,
- hexagonal socket cap screws.





Hole pattern