

40012077. - cubio cupboard

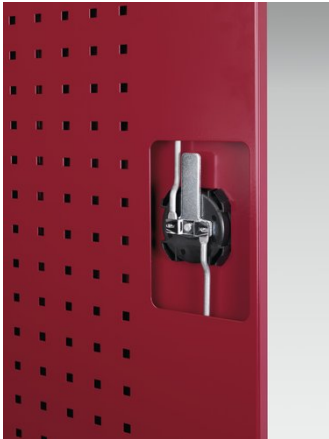
Short Description

cubio cupboard with perfo doors & 2 shelves

WxDxH: 800x525x800mm

Product Images





Additional Information

Description	cubio shelf cupboard. Featuring a heavy duty, reinforced steel housing with up to 1 tonne total capacity with double, perfo panel lined, reinforced high doors with 2 adjustable height, galvanised steel shelves (100kg U.D.L.). Finished in durable powder coat paint. WxDxH: 800x525x800mm.
Width	800
Depth	525
Height	800
Customs tariff number	94032080
Product material	Sheet steel
Product surface	Powder coated
Door type	Perfo
Door height 1	700 mm
Number of shelves	2
Shelf Type	Full Depth
Shelf Material	Steel
Shelf Load Capacity	75kg

Product Options

Colour:	Anthracite grey
	Crimson red
	Gentian blue
	Light grey