



The Timken Company

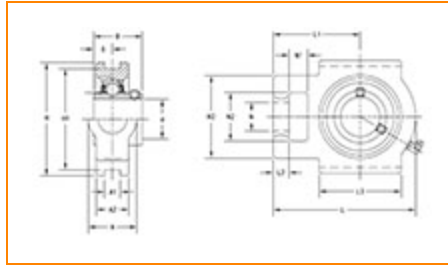
4500 Mt Pleasant St. NW

N. Canton, OH 44720

Phone: (234) 262-3000

E-Mail: CustomerCAD@timken.com • **Web site:** www.timken.com

Part Number UCT214, UCT 200 Take-Up Mounted Bearings - Set Screw Locking



[Specifications](#) | [Dimensions](#) | [Basic Load Ratings](#)

Specifications

Bearing Number	UC214
Shaft Size d	70 mm
UPC Code	087796078239
Locking Style	Set Screw Locking
Housing Construction	Take-Up

Dimensions

Housing Width A	70 mm 2.756 in
------------------------	-------------------



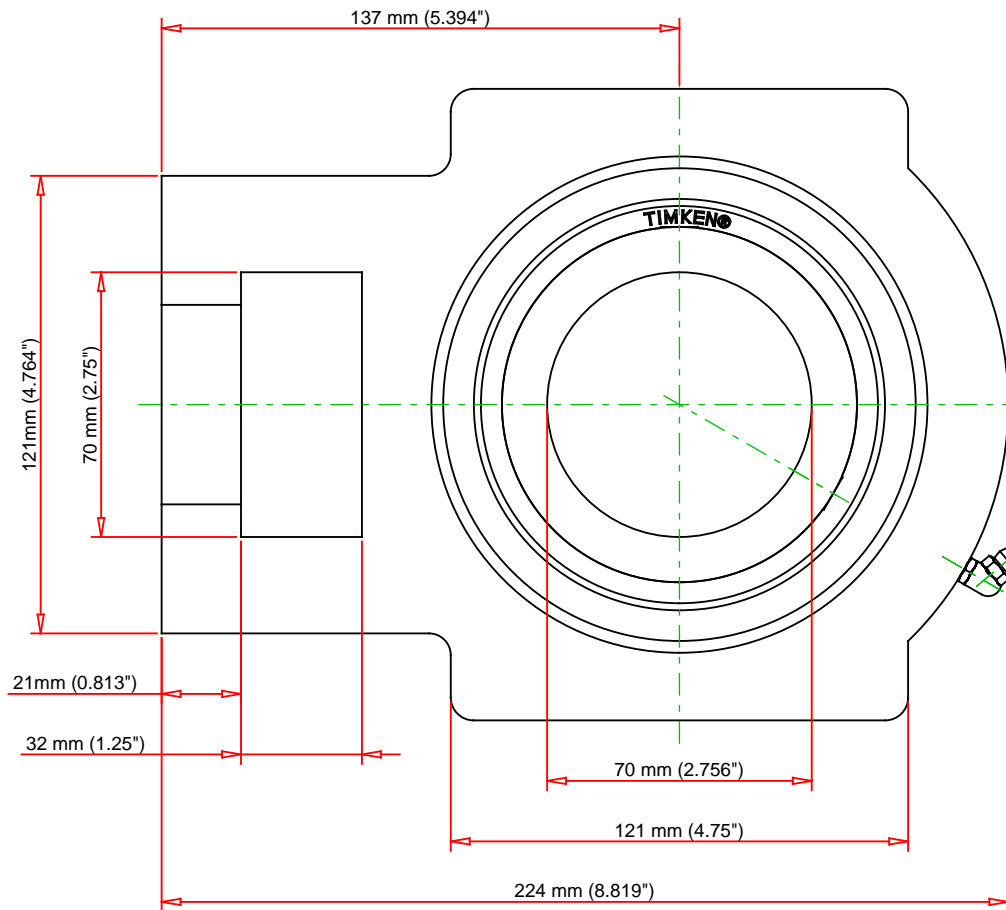
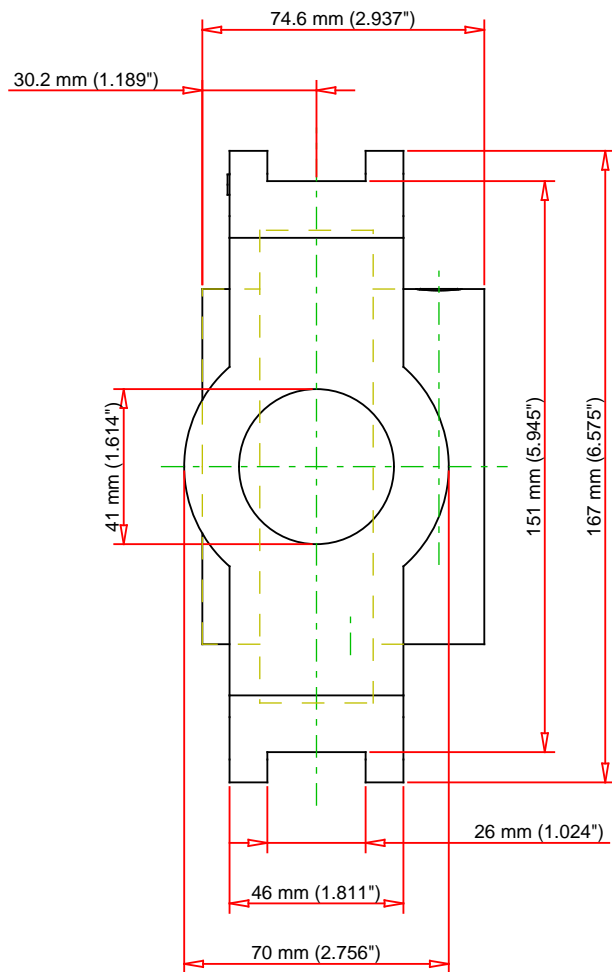
Slot Width A1	26 mm 1.024 in
Socket Width A2	46 mm 1.811 in
Total Height H	167 mm 6.575 in
Pitch Height H1	151 mm
Height H2	121 mm
Total Length L	224 mm 8.819 in
Shaft Length L1	137 mm 5.394 in
Dimension L2	21 mm
Slot Length L3	121 mm 4.75 in
Adjustment Screw Bore N	41 mm 1.614 in
Opening Width N1	32 mm 1.25 in
Opening Height N2	70 mm 2.75 in
Inner Ring Width B	74.6 mm 2.937 in
Center of Bearing from End S	30.2 mm 1.189 in
Grease Nipple Size	A-R1/8

Basic Load Ratings

—

Static Load Rating	44100 N 9914 lbf
---------------------------	---------------------

Dynamic Load Rating	62200 N 13983 lbf
----------------------------	----------------------



Bearing Number	UC214			
Load Ratings - C _r	13983	lbf	62200	N
Load Ratings - C _{0r}	9914	lbf	44100	N
Weight	15.4	lb	7	kg

TIMKEN

THE TIMKEN COMPANY
NORTH CANTON, OHIO USA

UCT214

UCT 200 Take-Up Mounted Bearings - Set
Screw Locking

Every reasonable effort has been made to ensure the accuracy of the information contained in this writing, but no liability is accepted for errors, omissions or for any other reason.

FOR DISCUSSION ONLY