


The Timken Company

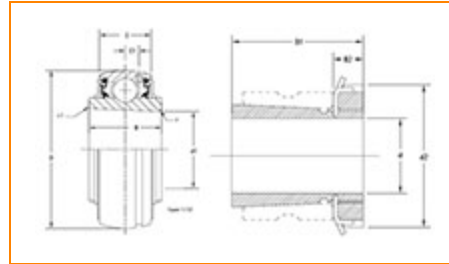
4500 Mt Pleasant St. NW

N. Canton, OH 44720

Phone: (234) 262-3000

E-Mail: CustomerCAD@timken.com • **Web site:** www.timken.com

Bearing Unit - Adapter Sleeve UK213 - H2313, UK 200 Wide Inner Ring Ball Bearings - Adapter Sleeve Locking



[Specifications](#) | [Dimensions](#) | [Basic Load Ratings](#)

Specifications

Bore Type	Tapered bore
Shaft Size d	60 mm
Adapter Sleeve Number¹	H2313
Material	Bearing Steel
Locking Style	Adapter Sleeve Locking

Dimensions

Outside Diameter D	120.000 mm 4.724 in
Inside Ring Width B	47 mm 1.85 in

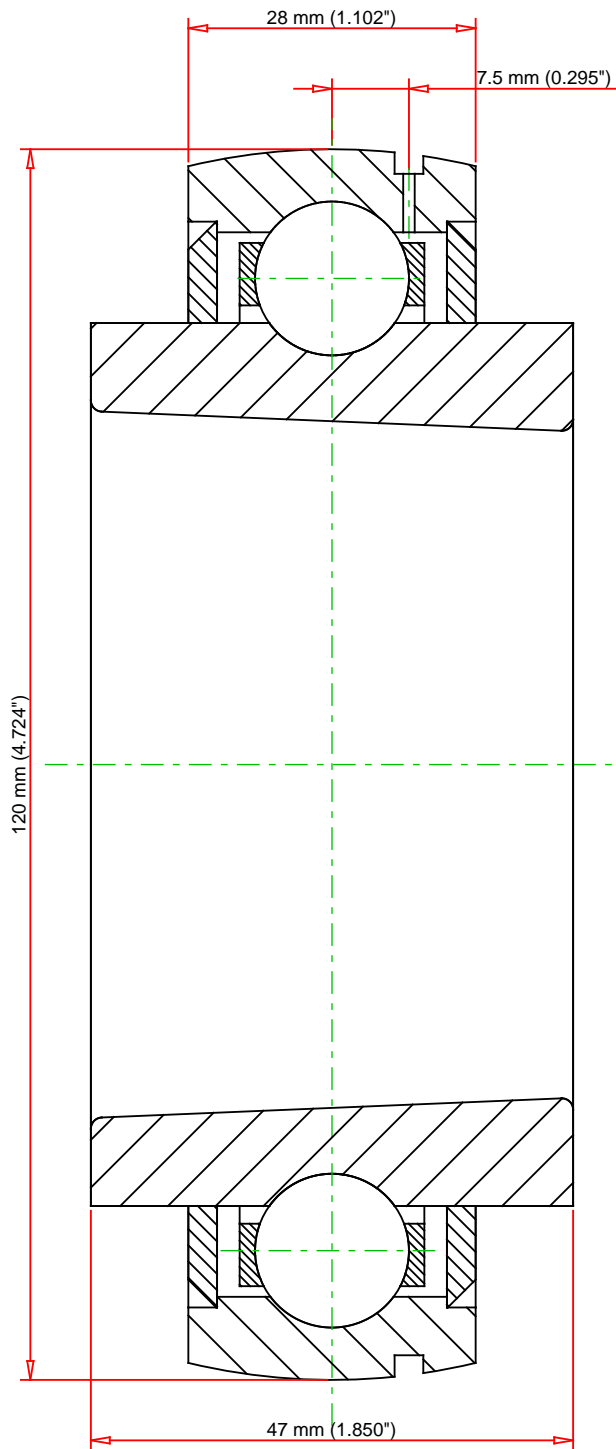


Outside Ring Width C	28.0 mm 1.102 in
Radius r	1.1 mm 0.043 in
Groove Position C1	7.5 mm 0.295 in
Dimension B1	65 mm 2.559 in

Basic Load Ratings

Static Load Rating	40100 N 9015 lbf
Dynamic Load Rating	57200 N 12859 lbf

¹ Purchase the Adapter Sleeve separately



Weight	3.7 lb	1.7 kg	<div>UK213 - H2313</div> <div>UK 200 Wide Inner Ring Ball Bearings - Adapter Sleeve Locking</div>			
<div>TIMKEN®</div> <div>THE TIMKEN COMPANY</div> <div>NORTH CANTON, OHIO USA</div>						
			Basic Load Ratings - C _r		12859 lbf	57200 N
			Load Ratings - C _{0r}		9015 lbf	40100 N
			Every reasonable effort has been made to ensure the accuracy of the information contained in this writing, but no liability is accepted for errors, omissions or for any other reason.			FOR DISCUSSION ONLY