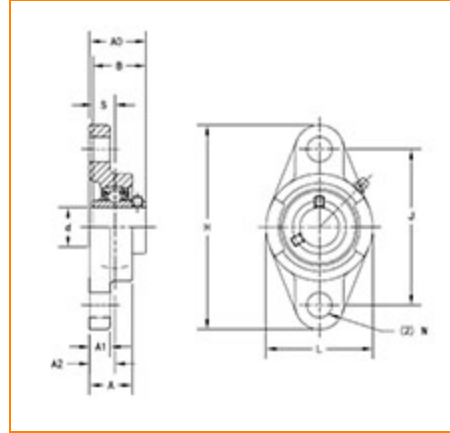




**The Timken Company**  
 4500 Mt Pleasant St. NW  
 N. Canton, OH 44720  
**Phone:** (234) 262-3000

**E-Mail:** [CustomerCAD@timken.com](mailto:CustomerCAD@timken.com) • **Web site:** [www.timken.com](http://www.timken.com)

## Part Number UCFL209, UCFL 200 Two-Bolt Flanged Housed Units - Set Screw Locking



[Specifications](#) | [Dimensions](#) | [Basic Load Ratings](#)

### Specifications

<b>Bearing Number</b>	UC209
<b>Shaft Size d</b>	45 mm
<b>Weight</b>	4.2 lb 1.9 Kg
<b>UPC Code</b>	087796075573
<b>Locking Style</b>	Set Screw Locking
<b>Housing Construction</b>	Two-Bolt Flange

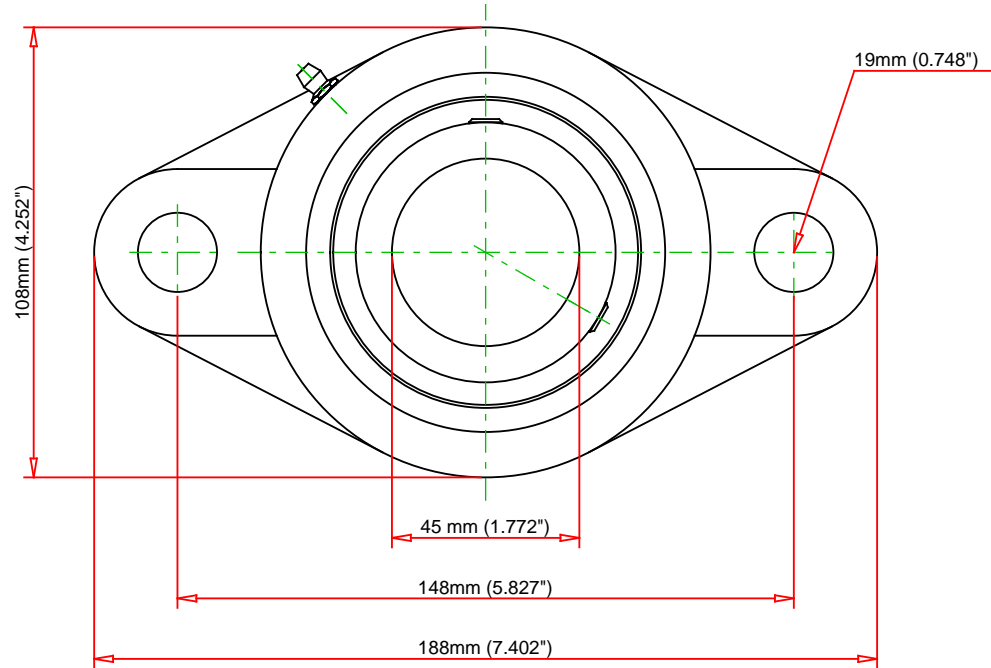
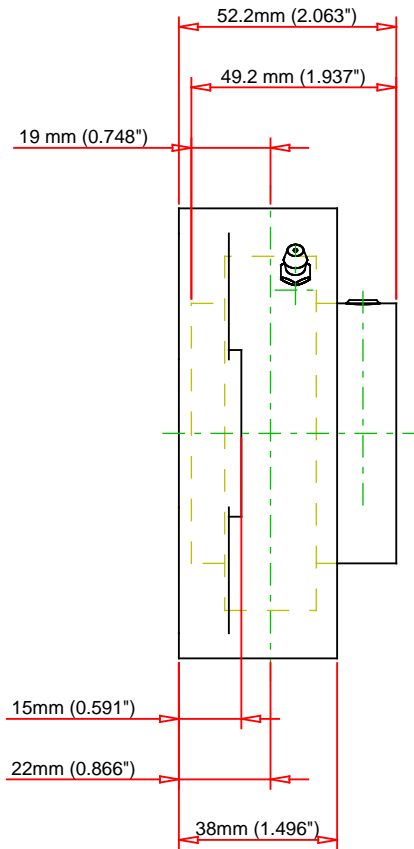
### Dimensions

<b>Total Length H</b>	188.00 mm 7.402 in
<b>Total Height L</b>	108.00 mm 4.252 in

<b>Housing Width A</b>	38.00 mm 1.496 in
<b>Bolt Hole Spacing J</b>	148.00 mm 5.827 in
<b>Bolt Hole Size N</b>	19.00 mm 0.748 in
<b>Flange Thickness A1</b>	15.00 mm 0.591 in
<b>Center of Bearing from Housing End A2</b>	22.00 mm 0.866 in
<b>Inner Ring Width B</b>	49.20 mm 1.937 in
<b>Center of Bearing from Bearing End S</b>	19 mm 0.748 in
<b>Bolt Size</b>	M16
<b>Dimension A0</b>	2.063 in 52.2 mm

## Basic Load Ratings

<b>Static Load Rating</b>	4788 lbf 21300 N
<b>Dynamic Load Rating</b>	7666 lbf 34100 N



Bearing Number	UC209			
Load Ratings - C <sub>r</sub>	7666	lbf	34100	N
Load Ratings - C <sub>0r</sub>	4788	lbf	21300	N
Weight	4.2	lb	1.9	kg
Bolt Size	M16			

**TIMKEN**

THE TIMKEN COMPANY  
NORTH CANTON, OHIO USA

**UCFL209**

UCFL 200 Two-Bolt Flanged Housed Units  
- Set Screw Locking

Every reasonable effort has been made to ensure the accuracy of the information contained in this writing, but no liability is accepted for errors, omissions or for any other reason.

**FOR DISCUSSION ONLY**