



**The Timken Company**

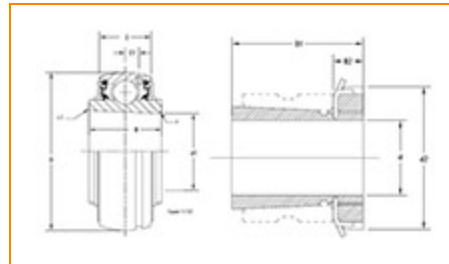
4500 Mt Pleasant St. NW

N. Canton, OH 44720

**Phone:** (234) 262-3000

**E-Mail:** [CustomerCAD@timken.com](mailto:CustomerCAD@timken.com) • **Web site:** [www.timken.com](http://www.timken.com)

## Bearing Unit - Adapter Sleeve UK212 - H2312, UK 200 Wide Inner Ring Ball Bearings - Adapter Sleeve Locking



[Specifications](#) | [Dimensions](#) | [Basic Load Ratings](#)

### Specifications

<b>Bore Type</b>	Tapered bore
<b>Shaft Size d</b>	55 mm
<b>Adapter Sleeve Number<sup>1</sup></b>	H2312
<b>Material</b>	Bearing Steel
<b>Locking Style</b>	Adapter Sleeve Locking

### Dimensions

<b>Outside Diameter D</b>	110.000 mm
<b>Inside Ring Width B</b>	47 mm
<b>Outside Ring Width C</b>	27.0 mm



Radius r	1.9 mm
----------	--------

Groove Position C1	7.5 mm
--------------------	--------

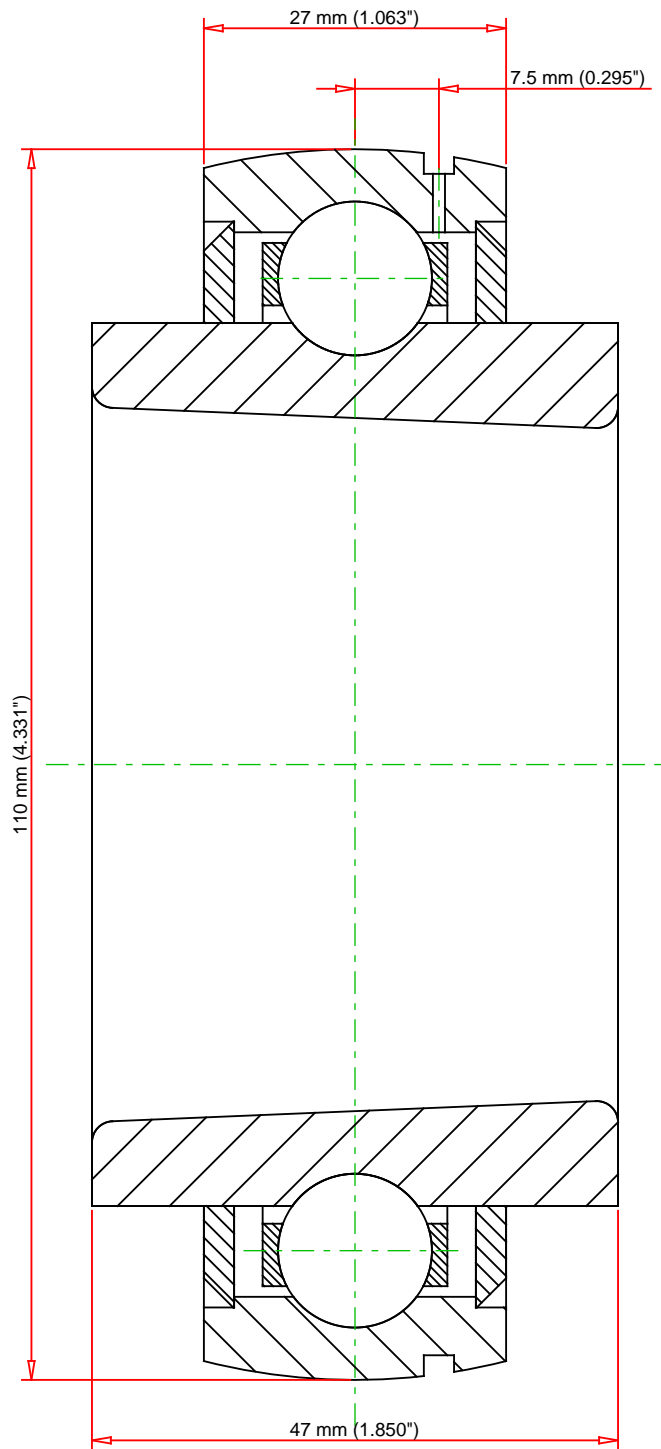
Dimension B1	62 mm
--------------	-------

## Basic Load Ratings

Static Load Rating	36200 N
--------------------	---------

Dynamic Load Rating	52400 N
---------------------	---------

<sup>1</sup> Purchase the Adapter Sleeve separately



Weight	3.1 lb	1.4 kg	<div>TIMKEN®</div> <div>THE TIMKEN COMPANY</div> <div>NORTH CANTON, OHIO USA</div>	<div>UK212 - H2312</div> <div>UK 200 Wide Inner Ring Ball Bearings - Adapter Sleeve Locking</div>				
				Basic Load Ratings - C <sub>r</sub>			11780 lbf	52400 N
				Load Ratings - C <sub>0r</sub>			8138 lbf	36200 N
Every reasonable effort has been made to ensure the accuracy of the information contained in this writing, but no liability is accepted for errors, omissions or for any other reason.				FOR DISCUSSION ONLY				