

Free Communication Software

SJ-Tools

This program can be downloaded for FREE from the Mitutoyo website. <http://www.mitutoyo.com>

Output software based on Microsoft-Excel* for controlling the devices and reproducing and storing the measurement data.

* Microsoft-Excel is not included in the scope of supply. Complete with exclusive accessories.

- Measurement device control
- Definition of measurement variables
- Graphic representation of the profile
- Storage of measurement records
- Documentation of measurement results
- Connecting cable

Optional cables (Required for software communication)

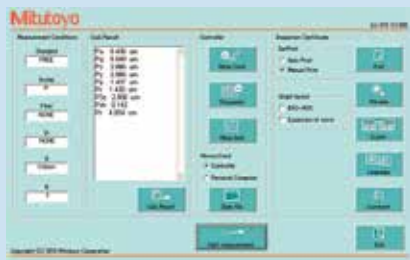
12AAL068: USB PC connecting cable(USB cable)for SJ-210

12AAD510: USB PC connecting cable(USB cable)for SJ-310/410

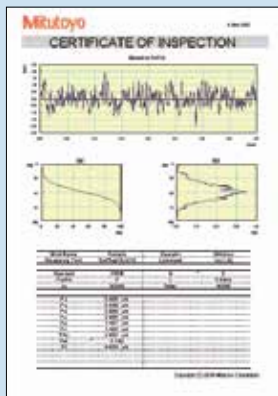
12AAL067: RS-232C cable for SJ-210

12AAA882: RS-232C cable for SJ-310/410

12AAH490: USB PC connecting cable for SJ-500/SV-2100



SJ-Tools input mask for SurfTest SJ series



SJ-Tools output record from MS-Excel

Optional Accessories

12AAL272: SJ-210 Replacement Battery Pack

12AAN046: SJ-310 Replacement Battery Pack

12BAK820: SJ-210 Display Protection Sheet (1pc.)

12AAL066: SJ-210 Display Protection Sheet (5pcs.)

12BAL402: SJ-310 Display Protection Sheet (1pc.)

12AAN040: SJ-310 Display Protection Sheet (10pcs.)

178-601: Precision Reference Specimen (Ra 3.00 µm)

178-602: Precision Reference Specimen

(Ra 119 µin / 3.00 µm)

178-603: Precision Reference Specimen – 2 values (GAR)

178-604: Precision Reference Specimen – 2 Values (MIT)

178-606: Precision Reference Specimen for Transverse Drive

(Ra 0.039 µin / 1.0 µm)

178-029: Manual Column Stand, must use adapter

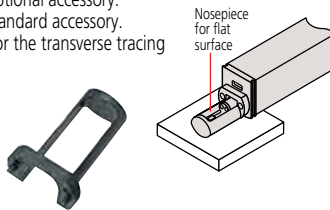
12AAA221 to mount SJ drive unit.

Nosepiece, Adapter

Nosepiece for flat surfaces

12AAA217

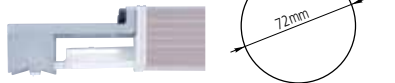
- SJ-210/210R optional accessory.
- SJ-310/310R standard accessory.
- Not available for the transverse tracing drive unit.



V-type adapter

12AAE644

- SJ-210/SJ-310 Transverse tracing type standard accessory.
- Dedicated to the transverse tracing drive unit.

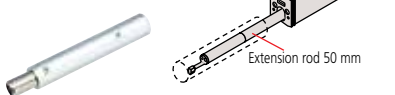


Extension rod (50mm)

12AAA210

- Not available for the transverse tracing drive unit.

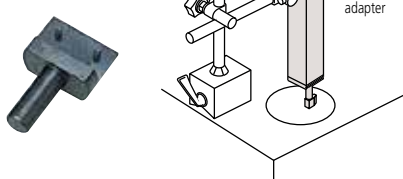
(Note: Only one rod can be used.)



Magnetic stand adapter

12AAA221 (ø8mm)

12AAA220 (ø9.5mm)



Extension cable (1m)

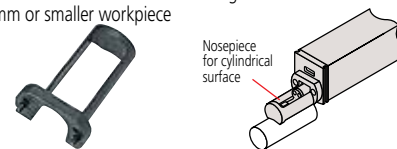
12BAA303

- Only one cable can be used.

Nosepiece for cylindrical surfaces

12AAA218

- SJ-210/210R optional accessory.
- SJ-310/310R standard accessory.
- Not available for the transverse tracing drive unit.
- ø30mm or smaller workpiece



Point-contact adapter

12AAE643

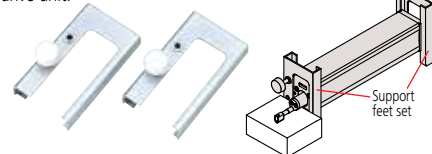
- SJ-210/SJ-310 Transverse tracing type standard accessory.
- Dedicated to the transverse tracing drive unit.



Support feet set

12AAA216

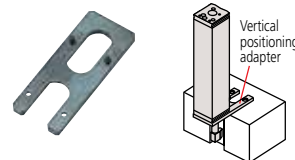
- SJ-210/210R optional accessory.
- SJ-310/310R standard accessory.
- Not available for the detector side of the transverse tracing drive unit.



Vertical positioning adapter

12AAA219

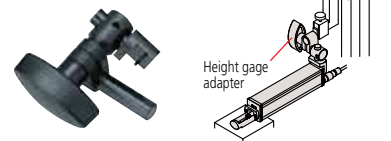
- Not available for the transverse tracing drive unit.



Height gage adapter

12AAA222 (9mm x 9mm)

12AAA233 (1/4" x 1/2")



Setting attachments

* Not available for the transverse tracing drive unit

Improves measurement efficiency by allowing the setup of workpieces of the same type and the positioning of hard-to-access features of a workpiece.

No. 178-033

V-type for measuring in the cylinder axis direction



The V-width is adjustable to the cylinder diameter facilitating axial measurement of a wide range of cylinder diameters.

- Adjustable range: ø 5 - 150mm

No. 178-034

Setting attachment: Magnetic slider type



Best suited for measurement of the flat surface of a workpiece that has partial indentions and steps and that is hard to set the drive unit. Combination use with the magnet type specimen holder (Option No. 12AAA910) further improves the ease of operation.

No. 178-035

Setting attachment: Inside diameter type



Greatly facilitates measurement of internal wall surfaces of, for example, cylinder-block bores.

- Applicable diameter: ø75 - ø95mm
- Accessible depth: 30 - 135mm