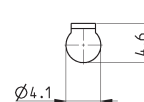
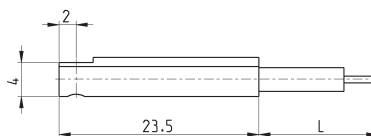
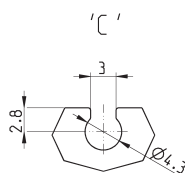


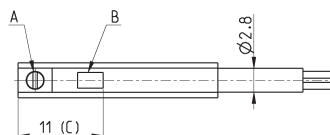
## Magnetic proximity switch with 2-wire cable for C-slot



In case of polarity reversing the sensor will still be operating, but the LED diode won't turn on.



A = fixing screw  
B = Led indicator  
C = ideal position detection

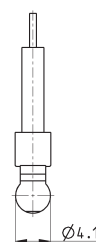
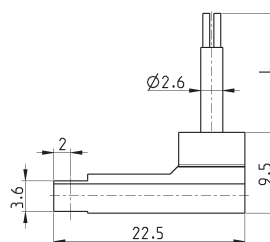
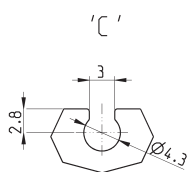


Mod.	Operation	Connections	Voltage	Output	Max. current	Max Load	Protection	L = length cable
CSC-D-220	Reed	2 fili	10÷110 V AC/DC	PNP	50 mA	8 W / 10 VA	Against polarity reversing and overvoltage	2 m

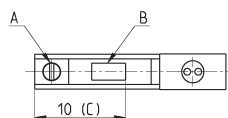
## Magnetic proximity switch with 2-wire 90° cable for C-slot



In case of polarity reversing the sensor will still be operating, but the LED diode won't turn on.



A = fixing screw  
B = Led indicator  
C = ideal position detection



Mod.	Operation	Connections	Voltage	Output	Max. current	Max Load	Protection	L = length cable
CSC-H-220	Reed	2 fili	10÷110 V AC/DC	PNP	50 mA	8 W / 10 VA	Against polarity reversing and overvoltage	2 m