

## Seal carrier assemblies DRS3590 (Series DRS)

for ZARF, ZARF...-L, with integral rotary shaft seal

The datasheet is only an overview of dimensions and basic load ratings of the selected product. Please always observe all the guidelines in these overview pages. Further information is given on many products under the menu item "Description". You can also order comprehensive information via the Catalogue ordering system ([https://www.schaeffler.de/content.schaeffler.de/en/news\\_media/index.jsp](https://www.schaeffler.de/content.schaeffler.de/en/news_media/index.jsp)) or by telephone on +49 (91 32) 82 - 28 97.

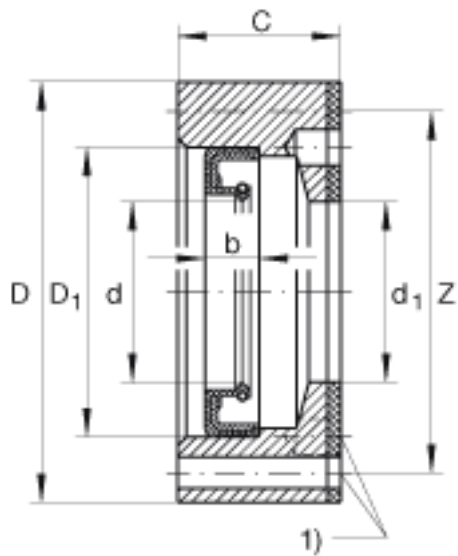
d <sub>1</sub>	60 mm	
D	90 mm	
C	19 mm	
1)	4 holes, offset by 90 degrees	
b	8 mm	
d	60 mm	
D <sub>1</sub>	72 mm	
Z	80 mm	4 holes, offset by 90 degrees
m	0,38 kg	Mass
	M4x25	Socket head cap screw to DIN 912

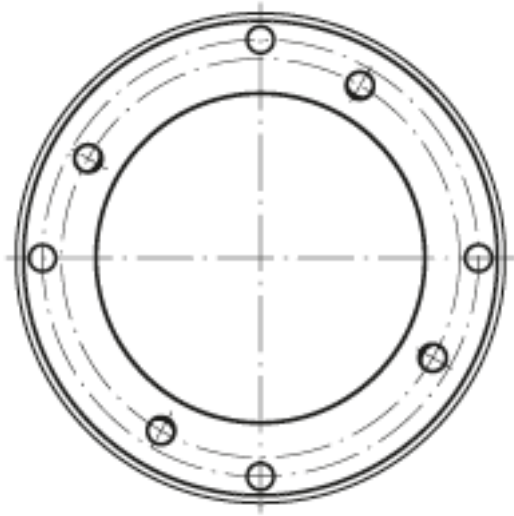
ZARF3590(-L)-TV

Corresponding bearing in standard or L design

Delivery as individual parts:

- seal carrier,
- rotary shaft seal,
- gasket,
- hexagonal socket cap screws.





Hole pattern