

Power Clamp Cylinder Compact Type

CKZT-X2797 **-X2798** □

ø25, ø32

How to Order

Base type

CKZT 25 - 105 S - X2797

With manually operated handle

CKZT 25 - 105 S - X2798 L

Bore size

25	25 mm
32	32 mm

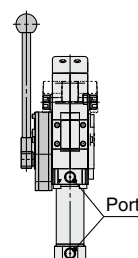
Arm opening angle

90	90°
105	105°

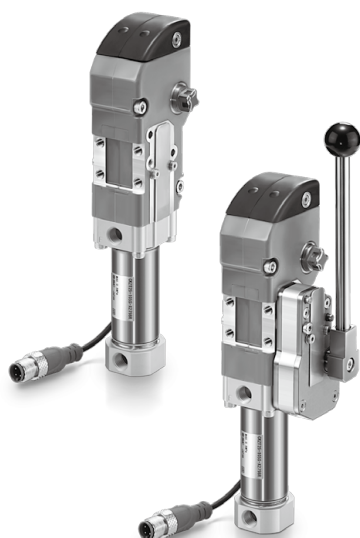
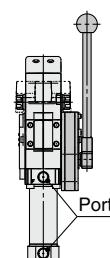
* Please contact SMC for other opening angles.

Manually operated handle mounting position

L (Left side mounting)



R (Right side mounting)

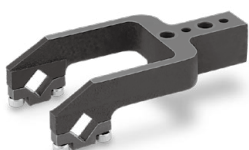
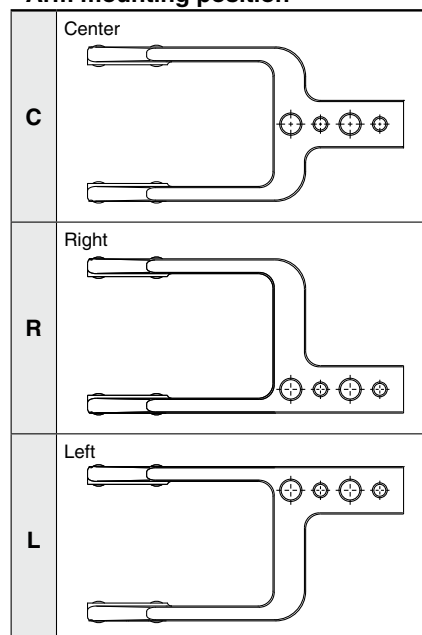


With manually operated handle

Clamp arm

CKZT 25 - A000 C S - X2797

Arm mounting position



Mounted clamp arm