



The Timken Company

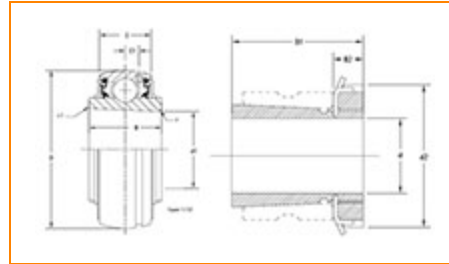
4500 Mt Pleasant St. NW

N. Canton, OH 44720

Phone: (234) 262-3000

E-Mail: CustomerCAD@timken.com • **Web site:** www.timken.com

Bearing Unit - Adapter Sleeve UK207 - H2307, UK 200 Wide Inner Ring Ball Bearings - Adapter Sleeve Locking



[Specifications](#) | [Dimensions](#) | [Basic Load Ratings](#)

Specifications

Bore Type	Tapered bore
Shaft Size d	30 mm
Adapter Sleeve Number¹	H2307
Material	Bearing Steel
Locking Style	Adapter Sleeve Locking

Dimensions

Outside Diameter D	72.000 mm
Inside Ring Width B	30 mm
Outside Ring Width C	20 mm

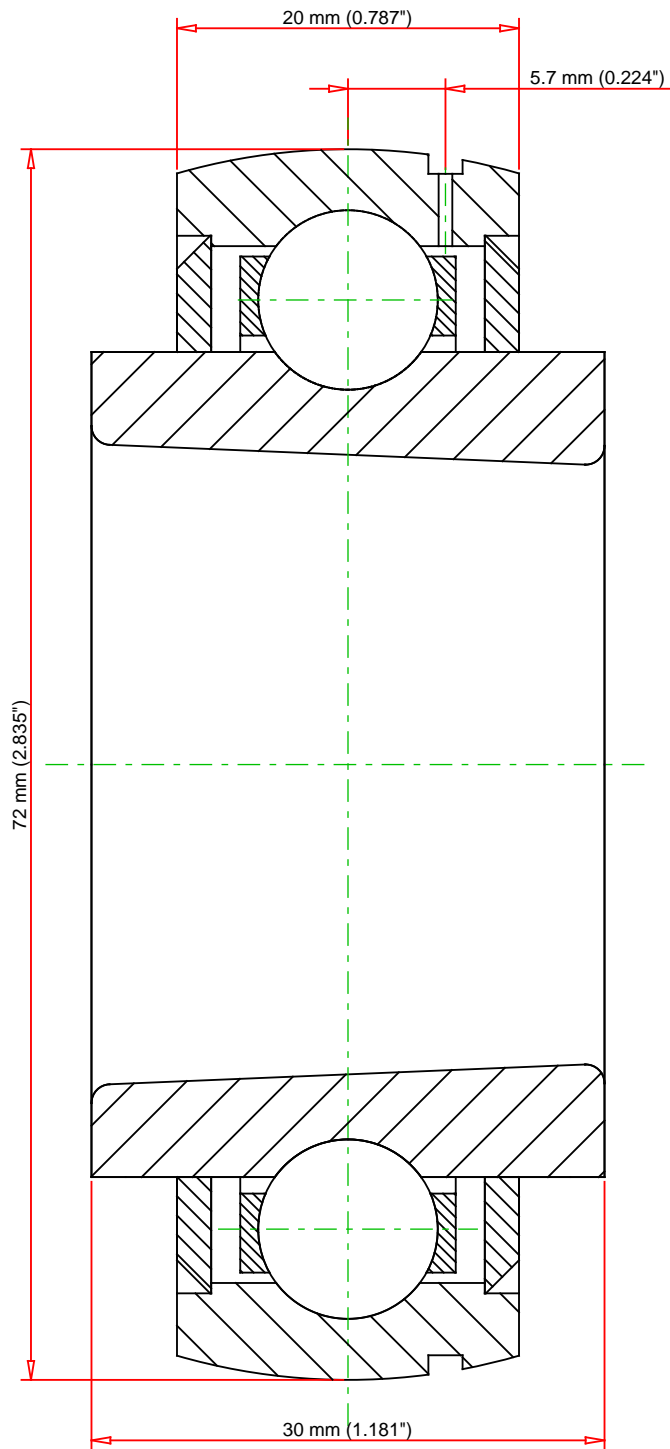



Radius r	1.1 mm
Groove Position C1	5.7 mm
Dimension B1	43 mm

Basic Load Ratings

Static Load Rating	15400 N
Dynamic Load Rating	25700 N

¹ Purchase the Adapter Sleeve separately



Weight	0.9 lb	0.4 kg	 THE TIMKEN COMPANY NORTH CANTON, OHIO USA	UK207 - H2307 UK 200 Wide Inner Ring Ball Bearings - Adapter Sleeve Locking				
				Basic Load Ratings - C _r			5778 lbf	25700 N
				Load Ratings - C _{0r}			3462 lbf	15400 N
Every reasonable effort has been made to ensure the accuracy of the information contained in this writing, but no liability is accepted for errors, omissions or for any other reason.				FOR DISCUSSION ONLY				