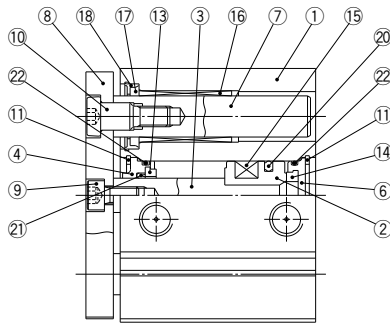
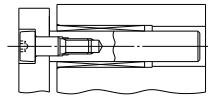


## Construction/Series MGQM

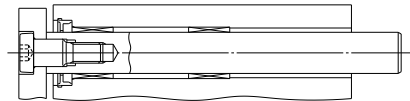
### MGQM12 to 25



50 stroke or less

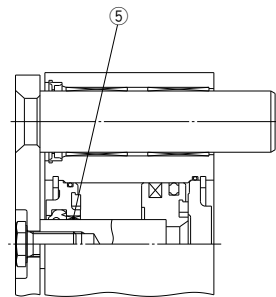
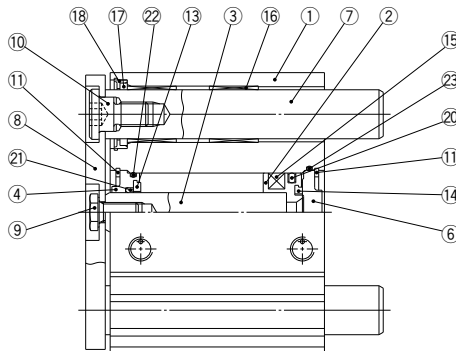


$\phi 12, \phi 16$



$\phi 20, \phi 25$  Over 50 stroke

### MGQM32 to 100



Over 50 stroke

### Component Parts

No.	Description	Material	Note
1	Body	Aluminum alloy	Hard anodized
2	Piston	Aluminum alloy	
3	Piston rod	Stainless steel	$\phi 12$ to $\phi 25$
		Carbon steel	$\phi 32$ to $\phi 100$ Hard chrome plated
4	Collar	Aluminum bearing alloy	$\phi 12$ to $\phi 40$ White anodized
		Aluminum alloy casted	$\phi 50$ to $\phi 100$ Painted
5	Bushing	Bearing alloy	$\phi 50$ to $\phi 100$
6	Head cover	Aluminum alloy	$\phi 12$ to $\phi 63$ Chromated
			$\phi 80$ to $\phi 100$ Painted
7	Guide rod	Carbon steel	Hard chrome plated
8	Plate	Carbon steel	Nickel plated
9	Plate mounting bolt	Carbon steel	Nickel plated
10	Guide bolt	Carbon steel	Nickel plated

No.	Description	Material	Note
11	Retaining ring	Carbon tool steel	Phosphate coated
12	Retaining ring	Carbon tool steel	Phosphate coated
13	Bumper A	Urethane	
14	Bumper B	Urethane	
15	Magnet	—	
16	Slide Bearing	Bearing alloy	
17	Felt		
18	Holder	Resin	
19	Ball bushing		
20*	Piston seal	NBR	
21*	Rod seal	NBR	
22*	Gasket A	NBR	
23*	Gasket B	NBR	

### Replacement Parts: Seal Kit

Bore size (mm)	Kit no.	Description
12	MGQ12-PS	
16	MGQ16-PS	
20	MGQ20-PS	A set of ⑳, ㉑, ㉒ and ㉓ listed above
25	MGQ25-PS	
32	MGQ32-PS	

\* Seal kit includes ㉒ to ㉓. Order the seal kit, based on each bore size.

Bore size (mm)	Kit no.	Description
40	MGQ40-PS	
50	MGQ50-PS	
63	MGQ63-PS	A set of ㉒, ㉑, ㉒ and ㉓ listed above
80	MGQ80-PS	
100	MGQ100-PS	

\* Since the seal kit does not include a grease pack, order it separately.  
Grease pack part no.: GR-S-010 (10 g)