

Speed Controller: Standard Type

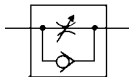
Series AS

In-line Type

Compact size saves space.
Speed may be accurately controlled even at low speeds.
Constant speed easily set.
Retainer prevents an accidental loss of needle.



JIS Symbol



Model/Flow Rate and Effective Area

Model	Port size	Free flow		Controlled flow		Applicable cylinder bore size (mm)	Weight (g)
		Flow rate (l/min (ANR))	Effective area (mm ²)	Flow rate (l/min (ANR))	Effective area (mm ²)		
AS1000-M3	M3 x 0.5	20	0.3	20	0.3	2.5, 4, 6	4.7
AS1000-M5	M5 x 0.8	90	1.4	80	1.2	6, 10, 16, 20, 25	33
AS2000-01	1/8	340	5.2	250	3.8	20, 25, 32, 40	90
AS2000-02	1/4	340	5.2	250	3.8		115
AS3000-02	1/4	810	12.3	810	12.3	32, 40, 50, 63	130
AS3000-03	3/8	810	12.3	810	12.3		124
AS4000-02	1/4	1,670	25.5	1,670	25.5	40, 50, 63, 80, 100	221
AS4000-03	3/8	1,670	25.5	1,670	25.5		214
AS4000-04	1/2	1,670	25.5	1,670	25.5		205
AS5000-02	1/4	2,840	44	2,840	44	40, 50, 63, 80, 100	242
AS5000-03	3/8	4,270	66	4,270	66		233
AS5000-04	1/2	4,270	66	4,270	66		224

Note) Flow rate values are measured at 0.5 Mpa and 20°C.

Specifications

Fluid	Air
Proof pressure note)	1.5 MPa (1.05 MPa)
Max. operating pressure note)	1 MPa (0.7 MPa)
Min. operating pressure note)	0.05 MPa (0.1 MPa)
Ambient and fluid temperature	-5 to 60°C (No freezing)
Number of needle rotations note)	8 turns (10 turns)

Note) (): Values for AS1000.

Accessory

Description	Part no.	Applicable model
Nipple	M-5N	AS1000

Note) AS1000 with nipple: AS1000-M5-N

How to Order

AS 1 000 — M5 —

Body size

1	M3, M5 standard
2	1/8, 1/4 standard
3	3/8 standard
4	1/2 standard
5	1/2 standard

Thread type

Nil	Metric thread (M3, M5)
N	Rc
F	NPT

Bore size

Bore size	Applicable series
M3	M3 x 0.5 AS1000
M5	M5 x 0.8 AS1000
01	Rc 1/8 AS2000
02	Rc 1/4 AS2000/3000/4000/5000
03	Rc 3/8 AS3000/4000/5000
04	Rc 1/2 AS4000/5000

Option

H ⁽¹⁾	High temperature (-5 to 80°C)
L ⁽²⁾	Low temperature (-30 to 60°C)

Note 1) AS5000 is available as special.
AS1000 is not applicable.
Note 2) AS1000, AS2000 are not applicable.

Caution

Be sure to read before handling. Refer to pages 15-18-3 to 15-18-4 for Safety Instructions and Common Precautions on the products mentioned in this catalog, and refer to pages 15-8-6 to 15-8-8 for Precautions on every series.

Speed Controller: Standard Type

Series AS

In-line Push Locking Type

Lock speed setting, with the touch of a button

It can be locked only by pushing the handle after adjustment.

Convenient opening indication scale

The opening indication scale for the needle valve is provided on the handle to facilitate speed adjustments.

Easy speed control at low flow volume ranges

Possible to control the mass velocity

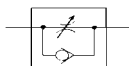
Constant handle constructed of metal to withstand heavy usage

In addition to the standard handle made of resin, a heavy-duty metal handle is also available.

Retainer prevents an accidental loss of needle



JIS Symbol

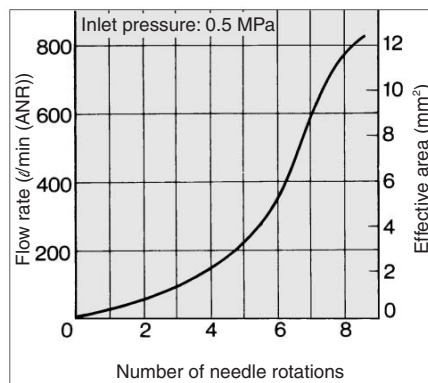


Model/Specifications

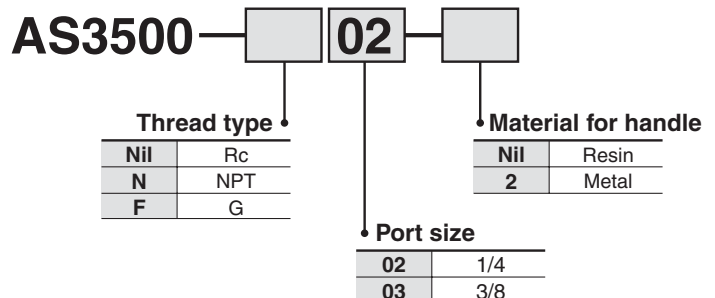
Model	Resin handle	AS3500-02	AS3500-03
	Metal handle	AS3500-02-2	AS3500-03-2
Port size		1/4	3/8
Applicable cylinder bore size (mm)		40, 50, 63	
Proof pressure		1.5 MPa	
Max. operating pressure		1 MPa	
Min. operating pressure		0.05 MPa	
Ambient and fluid temperature		-5 to 60°C (No freezing)	
Number of needle rotation		8 turns	
Weight		130 g (Metallic handle: 140 g)	
Free flow	Flow rate (ℓ/min (ANR))	810	
	Effective area (mm ²)	12.3	
Controlled flow	Flow rate (ℓ/min (ANR))	810	
	Effective area (mm ²)	12.3	

Note) Flow rate values are measured at 0.5 MPa and 20°C.

Needle Valve/Flow Characteristics AS3500



How to Order



⚠ Caution

Be sure to read before handling. Refer to pages 15-18-3 to 15-18-4 for Safety Instructions and Common Precautions on the products mentioned in this catalog, and refer to pages 15-8-6 to 15-8-8 for Precautions on every series.