



The Timken Company

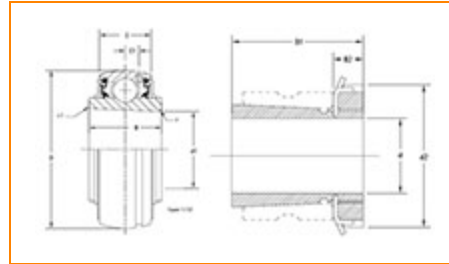
4500 Mt Pleasant St. NW

N. Canton, OH 44720

Phone: (234) 262-3000

E-Mail: CustomerCAD@timken.com • **Web site:** www.timken.com

Bearing Unit - Adapter Sleeve UK206 - H2306, UK 200 Wide Inner Ring Ball Bearings - Adapter Sleeve Locking



[Specifications](#) | [Dimensions](#) | [Basic Load Ratings](#)

Specifications

Bore Type	Tapered bore
Shaft Size d	25 mm
Adapter Sleeve Number¹	H2306
Material	Bearing Steel
Locking Style	Adapter Sleeve Locking

Dimensions

Outside Diameter D	62 mm
Inside Ring Width B	27 mm
Outside Ring Width C	19 mm

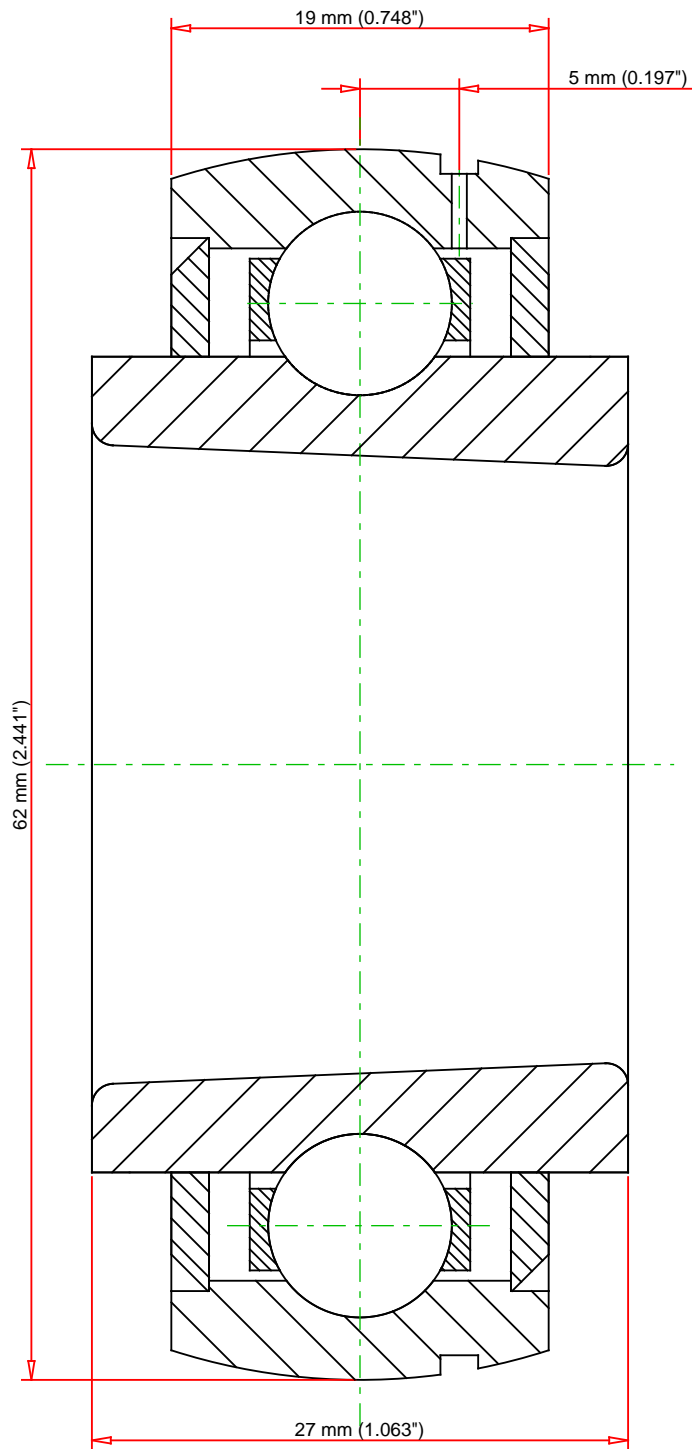



Radius r	1.1 mm
Groove Position C1	5 mm
Dimension B1	38 mm

Basic Load Ratings

Static Load Rating	11300 N
Dynamic Load Rating	19500 N

¹ Purchase the Adapter Sleeve separately



Weight	0.6 lb	0.3 kg		UK206 - H2306 UK 200 Wide Inner Ring Ball Bearings - Adapter Sleeve Locking		
			Basic Load Ratings - C _r		4384 lbf	19500 N
		Load Ratings - C _{0r}		2540 lbf	11300 N	
Every reasonable effort has been made to ensure the accuracy of the information contained in this writing, but no liability is accepted for errors, omissions or for any other reason.				FOR DISCUSSION ONLY		