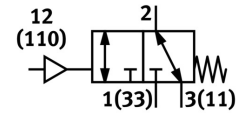
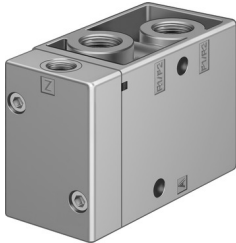


# Pneumatic valve VL/O-3-1/4

Part number: 9984

FESTO



[General operating condition](#)

## Data sheet

Feature	Value
Valve function	3/2-way, monostable, open/closed
Type of actuation	Pneumatic
Construction width	30.5 mm
Standard nominal flow rate	800 l/min
pneumatic working port	G1/4
Operating pressure	-0.095 MPa ... 1 MPa
Operating pressure	-0.95 bar ... 10 bar
Design	Poppet seat
Type of reset	Mechanical spring
Degree of protection	IP65
Nominal size	7 mm
Grid dimension	32 mm
Exhaust-air function	With flow control option
Sealing principle	Soft
Mounting position	optional
Type of piloting	Direct
Pilot air supply	External
Flow direction	Reversible
Symbol	00991030
lap	Underlap
Pilot pressure	0.1 MPa ... 1 MPa
Pilot pressure	1 bar ... 10 bar
Switching time off	26 ms
Switching time on	7 ms
Operating medium	Compressed air to ISO 8573-1:2010 [7:4:4]
Note on operating and pilot medium	Lubricated operation possible (in which case lubricated operation will always be required)
Corrosion resistance class CRC	1 - Low corrosion stress
LABS (PWIS) conformity	VDMA24364-B1/B2-L
Storage temperature	-20 °C ... 60 °C
Media temperature	-10 °C ... 60 °C
Pilot medium	Compressed air to ISO 8573-1:2010 [7:4:4]
Ambient temperature	-10 °C ... 60 °C
Product weight	230 g

Feature	Value
Type of mounting	Either: On manifold rail With through-hole
Pilot air port 110	G1/8
Pilot air port 12	G1/8
Pneumatic connection, port 1	G1/4
Pneumatic connection, port 11	G1/4
Pneumatic connection, port 2	G1/4
Pneumatic connection, port 3	G1/4
Pneumatic port 33	G1/4
Note on materials	RoHS-compliant
Material seals	NBR
Material housing	Die-cast aluminium