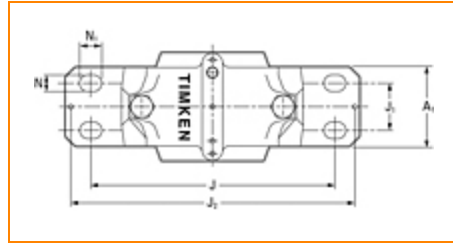




The Timken Company
 4500 Mt Pleasant St. NW
 N. Canton, OH 44720
Phone: (234) 262-3000

E-Mail: CustomerCAD@timken.com • **Web site:** www.timken.com

Housing – Bearing – Seal FSNT 515-612 - 22215K - TSNG515, FSNT Taper Bore Plummer Block Housed Units



[Types of Components](#) | [Housing](#) | [Bearing](#) | [Dimensions](#) | [Specifications](#)

Types of Components

Housing	FSNT 515-612
Bearing	22215K
Locating Rings (width x OD)	SR130X12.5
Seal Type	Double Lip
Seal	TSNG515
Adapter Sleeve ¹	H315
Locknut	KM15
Lockwasher	MB15
End Cover ²	EC515-612

Housing

Material	Cast Iron
Housing Mass	6.90 Kg
Bolt Qty	4

Bearing

Cage Type	EJ
C1 Dynamic Load Rating	222
C0 Static Load Rating	240
Max Oil Speed	4600
Max Grease Speed	3700

Dimensions

Shaft Diameter d	65 mm
A	115.00 mm
A1	80 mm
G	M12
H	156.00 mm
H1	80.0 mm
H2	30 mm
J	230 mm
J1	40 mm
J2	257 mm
L	280.00 mm
N	15 mm

N1

20.00 mm

Specifications

UPC Code

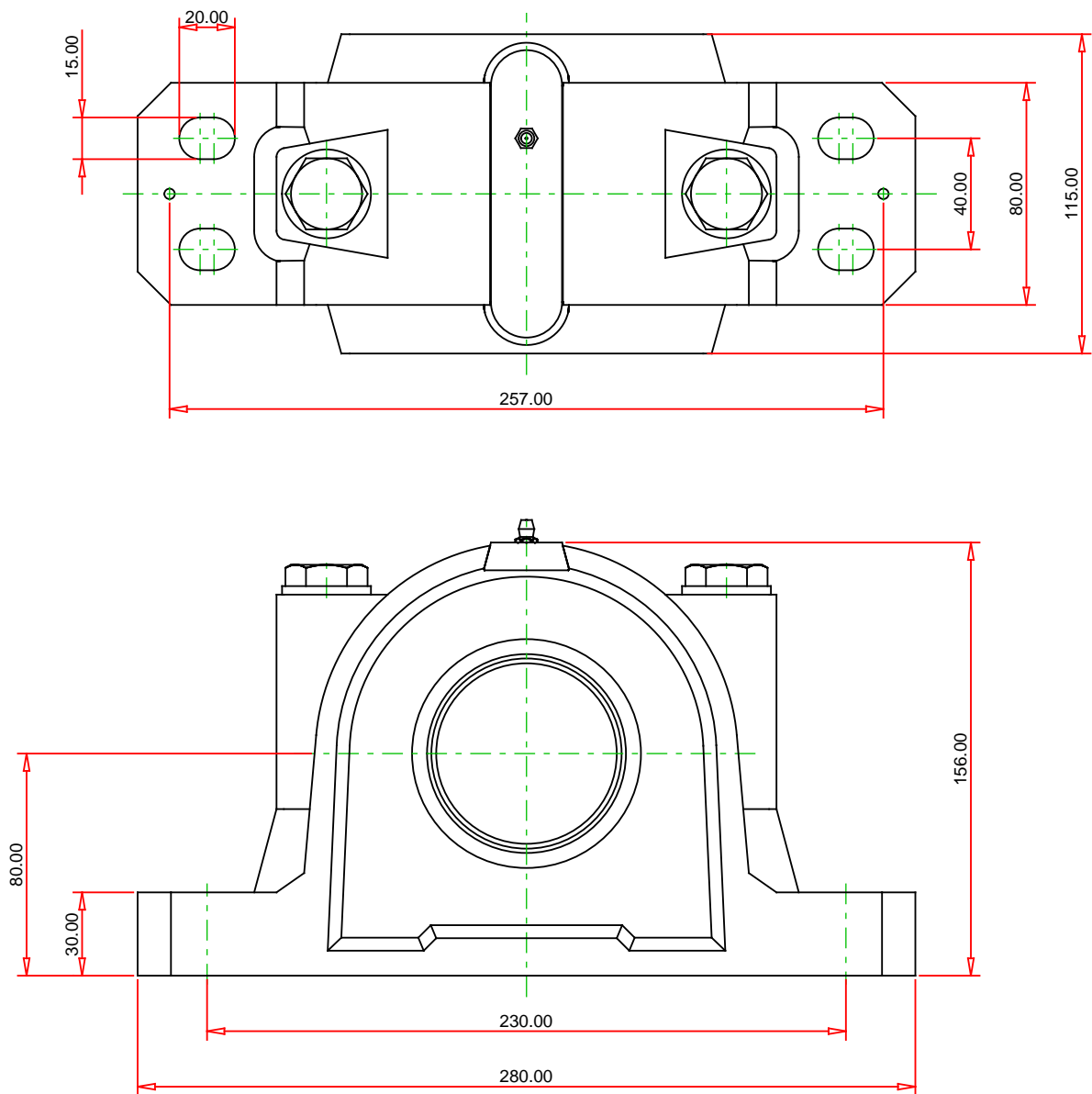
999999999

Alternate Part Name

FSNT515-612 - 22215K - TSNG515

¹ Purchase the Adapter Sleeve separately

² Two seals are required for a thru shaft application. One end cover can be used if application is not a thru shaft design. In this case, only one seal is required.



Note: Section View not to Scale

METRIC UNITS

Housing	FSNT 515-612
Bearing	22215K
Seal (Quantity 2)	Double Lip
Seal Type	TSNG515
Locating Ring (Quantity 2)	SR130X12.5
Adapter Sleeve	H315
(includes 1 sleeve, 1 locknut and 1 lockwasher)	

TIMKEN®

THE TIMKEN COMPANY
NORTH CANTON, OHIO USA

FSNT 515-612 - 22215K - TSNG515 FSNT Taper Bore Plummer Block Housing Units

C1 Dynamic Load Rating (2 rows)	222 kN
C0 Static Load Rating	240 kN
Max Oil Speed	4600 RPM
Max Grease Speed	3700 RPM
Material	Cast Iron

Every reasonable effort has been made to ensure the accuracy of the information contained in this writing, but no liability is accepted for errors, omissions or for any other reason.

FOR DISCUSSION ONLY