

Speed Controller with Residual Pressure Release Valve with One-touch Fitting

Series **AS** **FE**

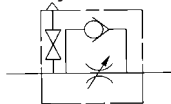
Elbow Type/Universal Type

Residual pressure can be easily released with one push of button.

Eye-catching red color release button.



JIS Symbol



Flow Direction Symbols on Body

	Meter-out type	Meter-in type
Symbol		
JIS Symbol		

Model

Elbow type	Universal type	Port size in the cylinder side	Applicable tubing O.D. (mm)					Applicable cylinder bore size (mm)
			ø4	ø6	ø8	ø10	ø12	
AS22□1FE-01	AS23□1FE-01	R 1/8	●	●	●	● ⁽¹⁾		20, 25, 32
AS22□1FE-02	AS23□1FE-02	R 1/4	●	●	●	●		20, 25, 32, 40
AS32□1FE-03	AS33□1FE-03	R 3/8		●	●	●	●	40, 50, 63
AS42□1FE-04	AS43□1FE-04	R 1/2				●	●	63, 80, 100

Note 1) Elbow type only

Note 2) Distinction between meter-out/meter-in types by appearance

Those are distinguished by the lock nut. The meter-out type is electroless nickel plated, while the meter-in type is black zinc chromate plated.

Specifications

Fluid	Air
Proof pressure	1.5 MPa
Max. operating pressure	1.0 MPa
Min. operating pressure	0.1 MPa
Ambient and fluid temperature	-5 to 60°C (No freezing)
Number of needle rotations	10 turns
Effective area of residual exhaust valve	0.8 mm ²
Applicable tubing material	Nylon, Soft nylon, Polyurethane

Flow Rate and Effective Area

Model		AS22□1FE-01 AS23□1FE-01		AS22□1FE-02 AS23□1FE-02			AS32□1FE AS33□1FE			AS42□1FE AS43□1FE	
Tubing O.D.	Metric size	ø4	ø6 ø8 ø10	ø4	ø6	ø8 ø10	ø6	ø8	ø10 ø12	ø10	ø12
Controlled flow (Free flow)	Flow rate (ℓ/min (ANR))	180	230	260	390	460	660	790	920	1580	1710
	Effective area (mm ²)	2.7	3.5	4	6	7	10	12	14	24	26

Note) Flow rate values are measured at 0.5 MPa and 20°C.

How to Order

AS 2 2 1 1 FE 01-06 S K											
Body size		Type		Control type		Port size		Applicable tubing O.D. (mm)		Hexagonal lock nut	
2	1/8, 1/4 standard	2	Elbow	0	Meter-out	01	R 1/8	04	ø4		
3	3/8 standard	3	Universal	1	Meter-in	02	R 1/4	06	ø6		
4	1/2 standard					03	R 3/8	08	ø8		
						04	R 1/2	10	ø10		
								12	ø12		
										With seal	
										With residual pressure release valve	
										With One-touch fitting	