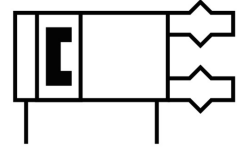
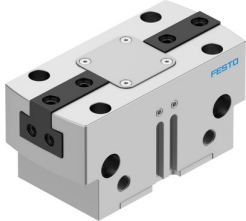



Parallel gripper HGPT-50-A-B-F

Part number: 560225

FESTO



 General operating condition

Data sheet

| Feature | Value |
|---|--|
| Size | 50 |
| Stroke per gripper jaws | 6 mm |
| Max. replacement accuracy | ≤0.2 mm |
| Max. angular gripper jaw backlash ax, ay | ≤0.1 deg |
| Max. gripper jaw backlash Sz | ≤0.02 mm |
| Rotationally symmetrical | ≤0.2 mm |
| Repetition accuracy, gripper | ≤0.05 mm |
| Number of gripper jaws | 2 |
| Drive system | Pneumatic |
| Mounting position | optional |
| Mode of operation | Double-acting |
| Gripper function | Parallel |
| Gripper force back-up | None |
| Design | Wedge-shaped drive Force pilot operated motion sequence |
| Position detection | Via proximity switch |
| Symbol | 00991894 |
| Total gripping force, opening, 0.6MPa (6bar, 87 psi) | 2370 N |
| Total gripping force, closing, 0.6MPa (6bar, 87 psi) | 2226 N |
| Operating pressure | 3 bar ... 8 bar |
| Operating pressure of blocked air | 0 bar ... 0.5 bar |
| Max. operating frequency of gripper | ≤2 Hz |
| Min. opening time at 0.6 MPa (6 bar, 87 psi) | 83 ms |
| Min. closing time at 0.6 MPa (6 bar, 87 psi) | 82 ms |
| Max. mass per external gripper finger | 640 g |
| Operating medium | Compressed air to ISO 8573-1:2010 [7:4:4] |
| Note on operating and pilot medium | Lubricated operation possible (in which case lubricated operation will always be required) |
| Corrosion resistance class CRC | 2 - Moderate corrosion stress |
| LABS (PWIS) conformity | VDMA24364-B1/B2-L |
| Degree of protection | IP40 |
| Ambient temperature | 5 °C ... 60 °C |
| Gripper force per gripper jaw, opening, 0.6 MPa (6 bar, 87 psi) | 1185 N |
| Gripper force per gripper jaw, closing, 0.6 MPa (6 bar, 87 psi) | 1113 N |
| Mass moment of inertia | 19.488 kgcm ² |

| Feature | Value |
|---|---|
| Max. force on gripper jaw Fz static | 3200 N |
| Max. torque at gripper Mx static | 120 Nm |
| Max. torque at gripper My static | 120 Nm |
| Max. torque at gripper Mz static | 100 Nm |
| Lubrication interval for guide components | 5 MioCyc |
| Product weight | 1400 g |
| Type of mounting | Either: Via female thread and centring sleeve Via through-hole and centring sleeve Via through-hole and dowel pin Via female thread and dowel pin |
| Pneumatic connection, blocked air | M5 |
| Pneumatic connection | G1/8 |
| Note on materials | RoHS-compliant |
| Material cover cap | High-alloy stainless steel |
| Material housing | Anodised aluminium |
| Material gripper jaws | Hardened steel |