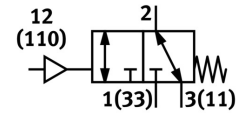
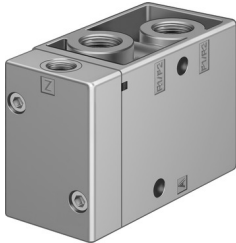



Pneumatic valve VL/O-3-1/4-EX

Part number: 536029

FESTO



 General operating condition

Data sheet

| Feature | Value |
|---|---|
| Valve function | 3/2-way, monostable, open/closed |
| Type of actuation | Pneumatic |
| Construction width | 30.5 mm |
| Standard nominal flow rate | 800 l/min |
| pneumatic working port | G1/4 |
| Operating pressure | -0.095 MPa ... 1 MPa |
| Operating pressure | -0.95 bar ... 10 bar |
| Design | Poppet seat |
| Type of reset | Mechanical spring |
| Degree of protection | IP65 |
| CE mark (see declaration of conformity) | To EU Explosion Protection Directive (ATEX) |
| CE marking (see declaration of conformity) | To UK EX instructions |
| ATEX category gas | II 2G |
| ATEX category dust | II 2D |
| Explosion ignition protection type for gas | Ex h IIC T4 Gb |
| Explosion ignition protection type for dust | Ex h IIIC T130°C Db |
| Explosion ambient temperature | -10°C ≤ Ta ≤ +60°C |
| Explosion protection certification outside the EU | EPL Db (GB) EPL Gb (GB) |
| Nominal size | 7 mm |
| Grid dimension | 32 mm |
| Exhaust-air function | With flow control option |
| Sealing principle | Soft |
| Mounting position | optional |
| Type of piloting | Direct |
| Pilot air supply | External |
| Flow direction | Reversible |
| Symbol | 00991030 |
| lap | Underlap |
| Pilot pressure | 0.1 MPa ... 1 MPa |
| Pilot pressure | 1 bar ... 10 bar |
| Switching time off | 26 ms |
| Switching time on | 7 ms |

| Feature | Value |
|------------------------------------|---|
| Explosion protection | Zone 1 (ATEX) Zone 1 (UKEX) Zone 2 (ATEX) Zone 21 (ATEX) Zone 21 (UKEX) Zone 22 (ATEX) |
| Operating medium | Compressed air to ISO 8573-1:2010 [7:4:4] |
| Note on operating and pilot medium | Lubricated operation possible (in which case lubricated operation will always be required) |
| Corrosion resistance class CRC | 1 - Low corrosion stress |
| LABS (PWIS) conformity | VDMA24364-B1/B2-L |
| Storage temperature | -20 °C ... 60 °C |
| Media temperature | -10 °C ... 60 °C |
| Pilot medium | Compressed air to ISO 8573-1:2010 [7:4:4] |
| Ambient temperature | -10 °C ... 60 °C |
| Product weight | 230 g |
| Type of mounting | Either: On manifold rail With through-hole |
| Pilot air port 110 | G1/8 |
| Pilot air port 12 | G1/8 |
| Pneumatic connection, port 1 | G1/4 |
| Pneumatic connection, port 11 | G1/4 |
| Pneumatic connection, port 2 | G1/4 |
| Pneumatic connection, port 3 | G1/4 |
| Pneumatic port 33 | G1/4 |
| Note on materials | RoHS-compliant |
| Material seals | NBR |
| Material housing | Die-cast aluminium |