

RASEL70-XL

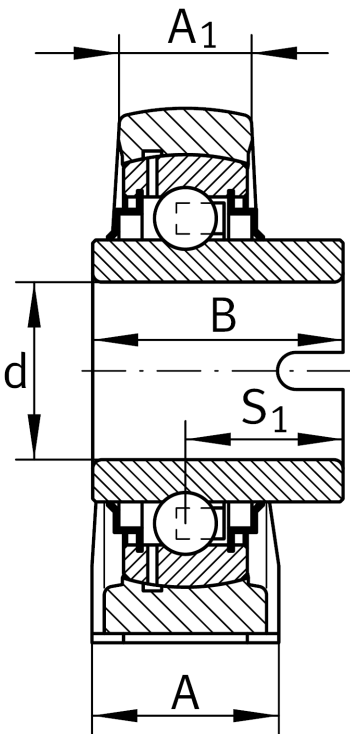
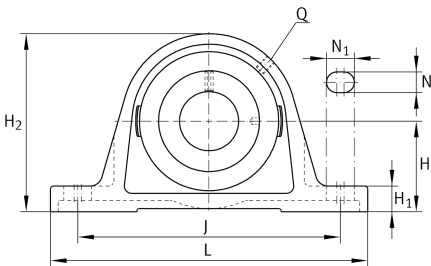
Plummer block housing unit

Schaeffler ID:
0008487860000

Plummer block housing units RASEL, cast iron housing, non-locating bearing, drive slot on inner ring, R seals

X-life

Technical information



Main Dimensions & Performance Data

d	70 mm	Bore diameter
L	260 mm	Length total
H ₂	156 mm	Height
	5.87 kg	Weight

Mounting dimensions

J	202.5 mm	Distance fixing bore
N	22 mm	Width (slot)
N ₁	28 mm	Length (slot)

Dimensions

H	79.4 mm	Distance shaft axis
A	65 mm	Width (base)
A ₁	44 mm	Width (head)
H ₁	27.5 mm	Height (base)
B	68.2 mm	Width
S ₁	41.2 mm	Distance of raceway to locking collar
Q	M6	Connection thread for lubrication

Additional information

ASE14	Housing
GLE70-XL-KRR-B	Bearing designation

Temperature range

T _{min}	-40 °C	Operating temperature min.
T _{max}	150 °C	Operating temperature max.