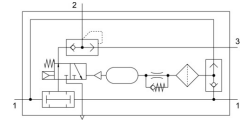


# Control block for two-hand start ZSB-1/8-B

Part number: 576656

**FESTO**



## Data sheet

| Feature                                    | Value   |
|--|---|
| Nominal width                              | 4 mm  |
| Type code                                  | ZSB   |
| Actuation type                             | Pneumatic   |
| Mounting position                          | Any   |
| Symbol                                     | 00991790  |
| Safety function                            | Two-hand control  |
| Performance Level (PL)                     | Two-hand control/category 1, performance level c                      |
| Operating pressure                         | 4 bar ... 8 bar   |
| Standard nominal flow rate                 | 50 l/min  |
| Certificate issuing authority              | IFA 1201046   |
| Explosion prevention and protection        | Zone 21 (ATEX)<br>Zone 2 (ATEX)<br>Zone 1 (ATEX)<br>Zone 22 (ATEX)    |
| Operating medium                           | Compressed air as per ISO 8573-1:2010 [7:4:4]                         |
| Information on operating and pilot media   | Operation with oil lubrication possible (required for further use)    |
| CE marking (see declaration of conformity) | as per EU machinery directive   |
| Shock resistance                           | Shock test with severity level 2 as per FN 942017-5 and EN 60068-2-27 |
| Corrosion resistance class (CRC)           | 1 - Low corrosion stress  |
| Ambient temperature                        | 0 °C ... 60 °C  |
| Product weight                             | 420 g   |
| Type of mounting                           | With internal thread<br>With through-hole<br>Optionally:              |
| Pneumatic connection 2                     | G1/8  |
| Pneumatic connection 3                     | G1/8  |
| Note on materials                          | RoHS-compliant  |
| Cover material                             | Die-cast aluminum   |
| Seals material                             | NBR   |
| Housing material                           | Wrought aluminum alloy<br>Anodized                                    |