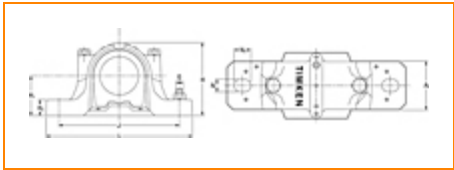




The Timken Company
4500 Mt Pleasant St. NW
N. Canton, OH 44720
Phone: (234) 262-3000
E-Mail: CustomerCAD@timken.com • **Web site:** www.timken.com

Housing – Bearing – Seal SNT 509 - 22209K - TSNG509, SNT Taper Bore Plummer Block Housed Units



[Types of Components](#) | [Housing](#) | [Bearing](#) | [Dimensions](#) | [Specifications](#)

Types of Components	
Housing	SNT 509
Bearing	22209K
Locating Rings (width x OD)	SR85X3.5
Seal Type	Double Lip
Seal	TSNG509
Adapter Sleeve ¹	H309
Locknut	KM9
Lockwasher	MB9
End Cover ²	EC509

Housing

Material	Cast Iron
Housing Mass	2.9 Kg
Bolt Qty	2

Bearing

Cage Type	EJ
C1 Dynamic Load Rating	109
C0 Static Load Rating	108
Max Oil Speed	6800
Max Grease Speed	5500

Dimensions

Shaft Diameter d	40 mm
A	85.00 mm
A1	60 mm
G	M12
H	109 mm
H1	60.0 mm
H2	25.0 mm
J	170.00 mm
Jmax	175 mm
Jmin	165 mm
L	205 mm
N	15 mm

N1

20.00 mm

Specifications

UPC Code

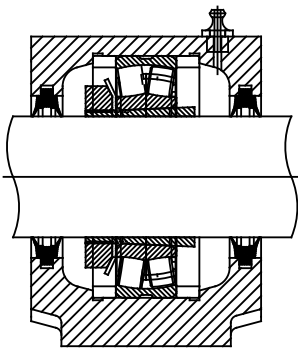
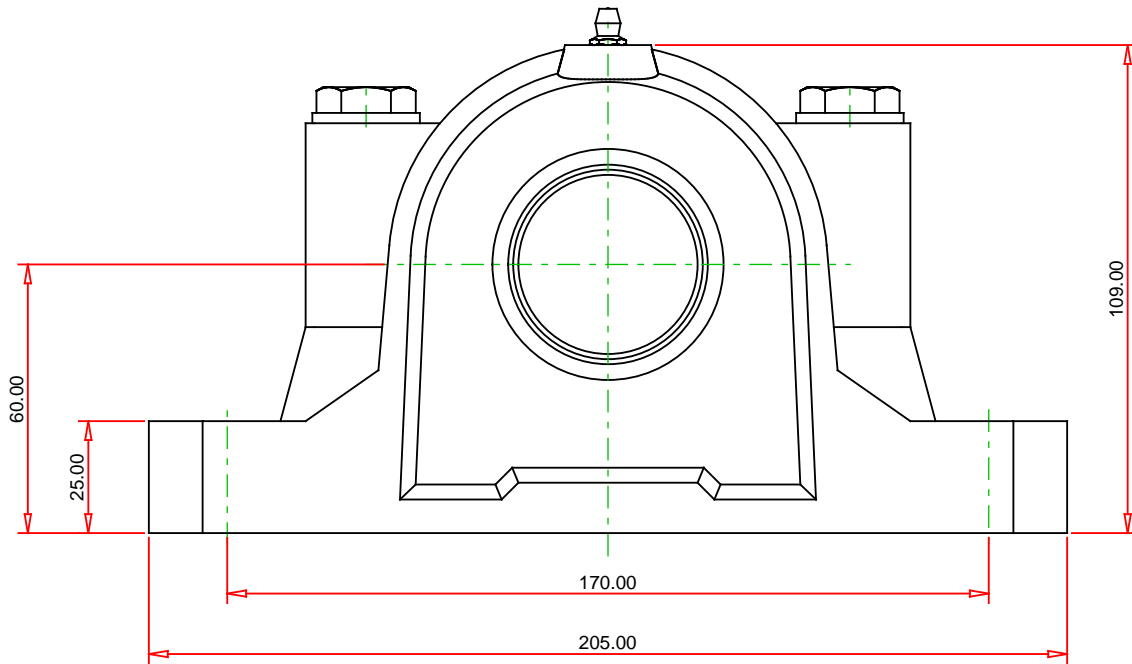
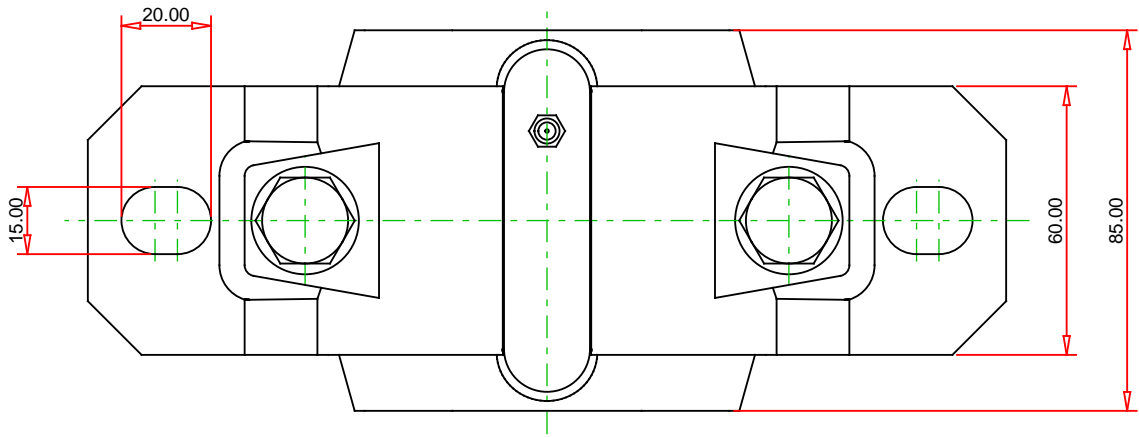
999999999

Alternate Part Name

SNT509 - 22209K - TSNG509

¹ Purchase the Adapter Sleeve separately

² Two seals are required for a thru shaft application. One end cover can be used if application is not a thru shaft design. In this case, only one seal is required.



Note: Section View not to Scale

METRIC UNITS

Housing
Bearing
Seal (Quantity 2)
Seal Type
Locating Ring (Quantity 2)
Adapter Sleeve
(includes 1 sleeve, 1 locknut
and 1 lockwasher)

SNT 509
22209K
TSNG509
Double Lip
SR85X3.5
H309

TIMKEN®

THE TIMKEN COMPANY
NORTH CANTON, OHIO USA

SNT 509 - 22209K - TSNG509
SNT Taper Bore Plummer Block Housed Units

C1 Dynamic Load Rating (2 rows)	109 kN
C0 Static Load Rating	108 kN
Max Oil Speed	6800 RPM
Max Grease Speed	5500 RPM
Material	Cast Iron

Every reasonable effort has been made to ensure the accuracy of the information contained in this writing, but no liability is accepted for errors, omissions or for any other reason.

FOR DISCUSSION ONLY