

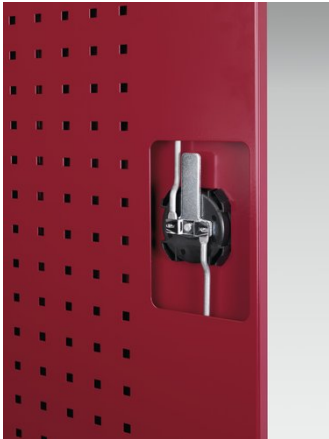
40021130. - cubio cupboard

Short Description

cubio cupboard louvre door louvre back 2 shelves 81 bin
WxDxH: 1050x650x2000mm

Product Images





Additional Information

Description	cubio bin cupboard. Featuring a heavy duty, reinforced steel housing with up to 1 tonne total capacity with double, louvre panel lined, reinforced doors. With louvre backpanel and 81 piece bin kit and 2x adjustable height, galvanised steel shelves (100kg U.D.L.). Finished in durable powder coat paint. WxDxH: 1050x650x2000mm
Width	1050
Depth	650
Height	2000
Customs tariff number	94032080
Product material	Sheet steel
Product surface	Powder coated
Door type	Louvre
Door height 1	1900 mm
Number of shelves	2

Product Options

Colour:	Anthracite grey
	Crimson red
	Gentian blue
	Light grey