



**The Timken Company**

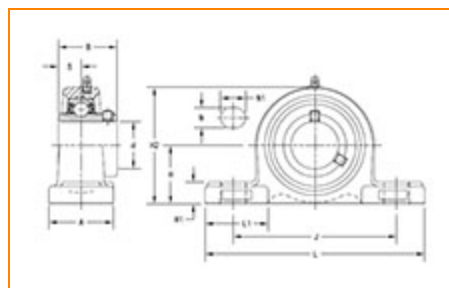
4500 Mt Pleasant St. NW

N. Canton, OH 44720

**Phone:** (234) 262-3000

**E-Mail:** [CustomerCAD@timken.com](mailto:CustomerCAD@timken.com) • **Web site:** [www.timken.com](http://www.timken.com)

## Part Number UCP213, UCP 200 Pillow Block Mounted Bearings - Set Screw Locking



[Specifications](#) | [Dimensions](#) | [Basic Load Ratings](#)

### Specifications

<b>Bearing Number</b>	UC213
<b>Shaft Size d</b>	65 mm
<b>UPC Code</b>	087796073050
<b>Locking Style</b>	Set Screw Locking
<b>Housing Construction</b>	Two-Bolt Pillow Block

### Dimensions

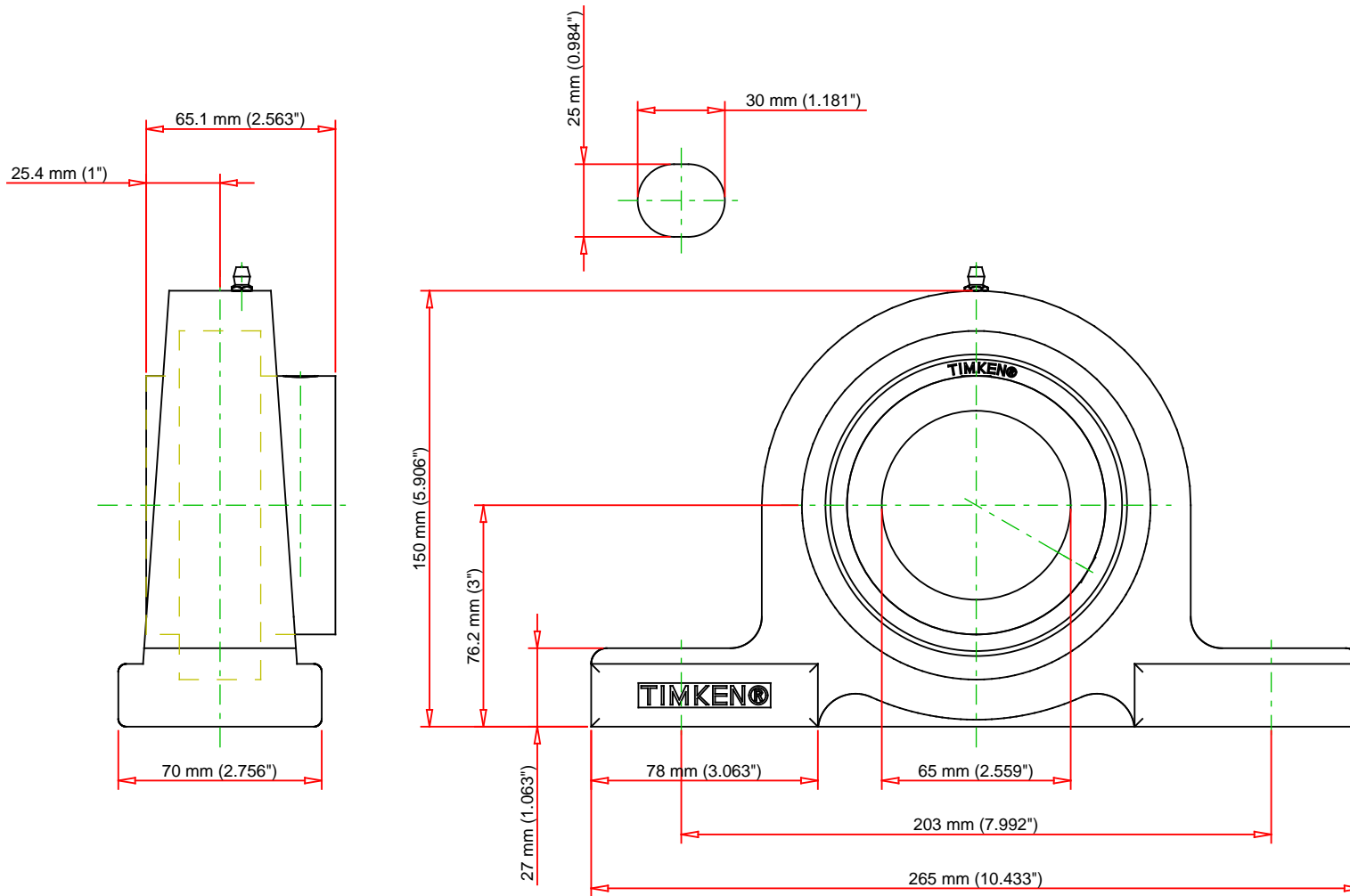
<b>Base to Center Height H</b>	76.2 mm 3 in
<b>Total Length L</b>	265 mm 10.433 in



<b>Housing Width A</b>	70.000 mm 2.7560 in
<b>Bolt Hole Spacing J</b>	203 mm 7.992 in
<b>Bolt Hole Size N</b>	25 mm 0.984 in
<b>Bolt Hole Length N1</b>	30 mm 1.181 in
<b>Foot Height H1</b>	27 mm
<b>Total Height H2</b>	150 mm 5.906 in
<b>Dimension L1</b>	78 mm 3.063 in
<b>Inner Ring Width B</b>	65.1 mm 2.563 in
<b>Center of Bearing from End S</b>	25.4 mm 1 in

## Basic Load Ratings

<b>Static Load Rating</b>	40100 N 9015 lbf
<b>Dynamic Load Rating</b>	57200 N 12859 lbf



Bearing Number	UC213			
Load Ratings - C <sub>r</sub>	12859	lbf	57200	N
Load Ratings - C <sub>0r</sub>	9015	lbf	40100	N
Weight	13	lb	5.9	kg
Bolt Size	M20			

**TIMKEN®**

THE TIMKEN COMPANY  
NORTH CANTON, OHIO USA

**UCP213**

UCP 200 Pillow Block Mounted Bearings -  
Set Screw Locking

Every reasonable effort has been made to ensure the accuracy of the information contained in this writing, but no liability is accepted for errors, omissions or for any other reason.

**FOR DISCUSSION ONLY**