

Flame Resistant (Equivalent to UL-94 Standard V-0) Speed Controller with One-touch Fittings Elbow Type

Series AS

Minimizes installation time and cost

Tube swivels 360°

Application to inch size tubing

● Metric size
ø6, ø8, ø10, ø12

Maximum operating pressure
1 MPa max.

Applicable tubing materials
FR double layer, FR soft nylon

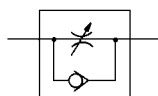
Retainer prevents accidental loss of needle.

Comes standard with seal.

Elbow type



JIS Symbol



Flow Direction Symbols on Body

	Meter-out type	Meter-in type
Symbol		
JIS Symbol		

Model

Elbow type	Port size	Applicable tubing O.D. (mm)				Applicable cylinder bore size (mm)
		6	8	10	12	
AS22□1F-01-□W2	R 1/8	●	●	●		20, 25, 32
AS22□1F-02-□W2	R 1/4	●	●	●		20, 25, 32, 40
AS32□1F-02-□W2	R 1/4	●	●	●	●	40, 50, 63
AS32□1F-03-□W2	R 3/8	●	●	●	●	40, 50, 63
AS42□1F-04-□W2	R 1/2			●	●	63, 80, 100

Note 1) Meter-out and meter-in types can be visually differentiated by the lock nut.

The lock nut on the meter-out type is electroless nickel plated, while the meter-in type is black zinc chromate plated.

Note 2) ● Marking is electroless nickel plated, provided as standard. (N specifications)

Specifications

Fluid	Air
Proof pressure	1.5 MPa
Max. operating pressure	1 MPa
Mini. operating pressure	0.1 MPa
Ambient and fluid temperature	-5 to 60°C (No freezing)
Number of needle rotations	10 turns
Applicable tubing material ^{Note)}	FR double layer, FR soft nylon

Note) Use caution regarding the max. tubing operating pressure.
(Refer to pages 379 and 380 for details.)

Flow Rate and Effective Area

Model	AS22□1F-01	AS22□1F-02			AS32□1F			AS42□1F	
Tubing O.D. (mm)	ø6, ø8, ø10	ø4	ø6	ø8, ø10	ø6	ø8	ø10, ø12	ø10	ø12
Controlled flow	Flow rate l/min (ANR)	230	260	390	460	660	790	920	1580
(Free flow)	Effective area (mm ²)	3.5	4	6	7	10	12	14	24

Note) Flow rate values are measured at 0.5 MPa and 20°C.

⚠ Caution

Be sure to read before handling.
Refer to front matters 58 and 59 for Safety Instructions and pages 412 to 414 for Flow Control Equipment Precautions.

AS

ASP

ASN

AQ

ASV

AK

VCHC

ASS

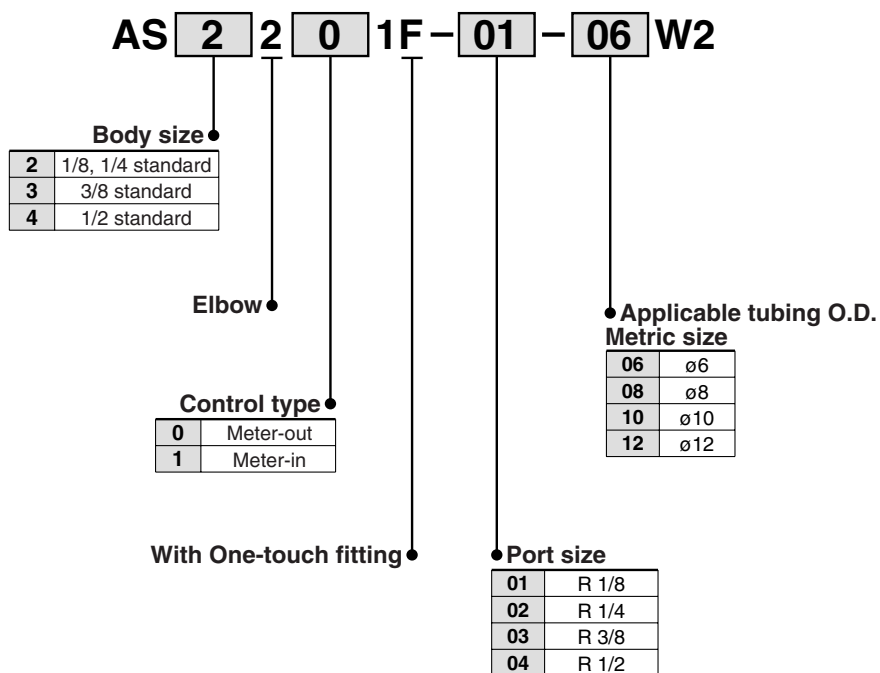
ASR

ASQ

KE

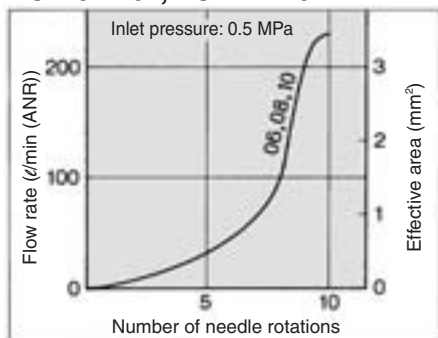
TMH

How to Order

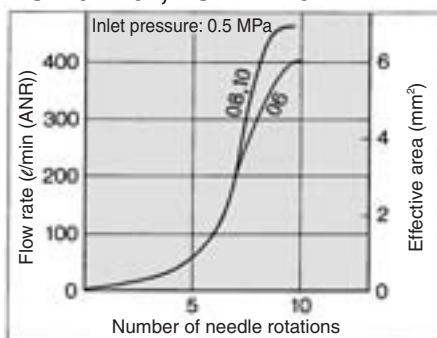


Needle Valve/Flow Characteristics

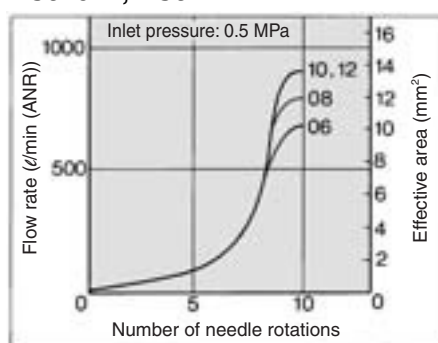
AS2201F-01, AS2211F-01



AS2201F-02, AS2211F-02



AS3201F, AS3211F



AS4201F, AS4211F

