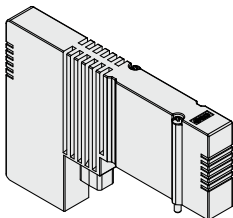


SY3000/5000/7000 Series

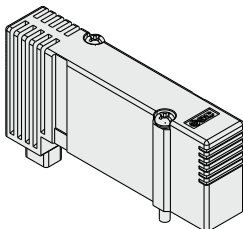
Manifold Options

Blanking plate assembly (With mounting screw)

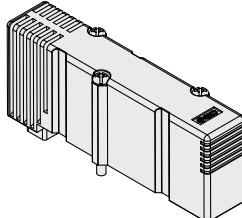
Used when valve additions are expected or for maintenance
A structure is in place on the blanking plate to prevent the mounting screws from sliding.



SY30M-26-2A (-B)



SY50M-26-2A (-B)



SY70M-26-2A (-B)

Refer to pages 276 to 278 for dimensions.

Refer to pages 270 to 275 for individual SUP/EXH and other options.

| Part numbers of mounting screw [Hexagon bolt] (For repairs) | |
|--|-------------------------------|
| SY3000: | SY3000-23-24A [SY3000-222-1A] |
| SY5000: | SY5000-221-1A [SY5000-222-1A] |
| SY7000: | SY7000-221-2A [SY7000-222-1A] |

How to Order Blanking Plate Assembly

SY 0M - 26 - 2 A -

Series

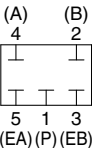
| | |
|---|--------|
| 3 | SY3000 |
| 5 | SY5000 |
| 7 | SY7000 |

Option for mounting

| | |
|-----|--|
| Nil | With mounting screw (Round head combination screw) |
| B | With mounting screw (Hexagon socket head cap screw) |

Base type

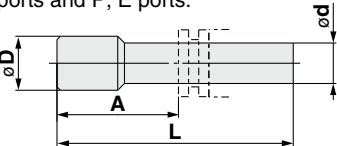
| | |
|---|------------------------|
| 2 | For plug-in metal base |
|---|------------------------|



Circuit diagram

Plug

These are inserted in unused cylinder ports and P, E ports.



* Shipped together with the product

Dimensions

| Applicable fitting size ød (Metric size) | Model | A | L | øD |
|---|---------|------|------|----|
| 2 | KJP-02 | 8.2 | 17 | 3 |
| 3.2 | KQ2P-23 | 16 | 31.5 | 5 |
| 4 | KQ2P-04 | 16 | 32 | 6 |
| 6 | KQ2P-06 | 18 | 35 | 8 |
| 8 | KQ2P-08 | 20.5 | 39 | 10 |
| 10 | KQ2P-10 | 22 | 43 | 12 |
| 12 | KQ2P-12 | 24 | 45.5 | 14 |

| Applicable fitting size ød (Inch size) | Model | A | L | øD |
|---|---------|------|------|------|
| 1/8" | KQ2P-01 | 16 | 31.5 | 5 |
| 5/32" | KQ2P-03 | 16 | 32 | 6 |
| 1/4" | KQ2P-07 | 18 | 35 | 8.5 |
| 5/16" | KQ2P-09 | 20.5 | 39 | 10 |
| 3/8" | KQ2P-11 | 22 | 43 | 11.5 |