


The Timken Company

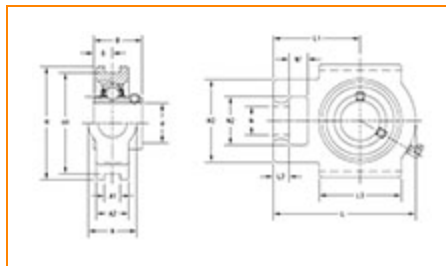
4500 Mt Pleasant St. NW

N. Canton, OH 44720

Phone: (234) 262-3000

E-Mail: CustomerCAD@timken.com • **Web site:** www.timken.com

Part Number UCT326, UCT 300 Take-Up Mounted Bearings - Set Screw Locking


[Specifications](#) | [Dimensions](#) | [Basic Load Ratings](#)

Specifications

Bearing Number	UC326
Shaft Size d	130 mm
Locking Style	Set Screw Locking
Housing Construction	Take-Up

Dimensions

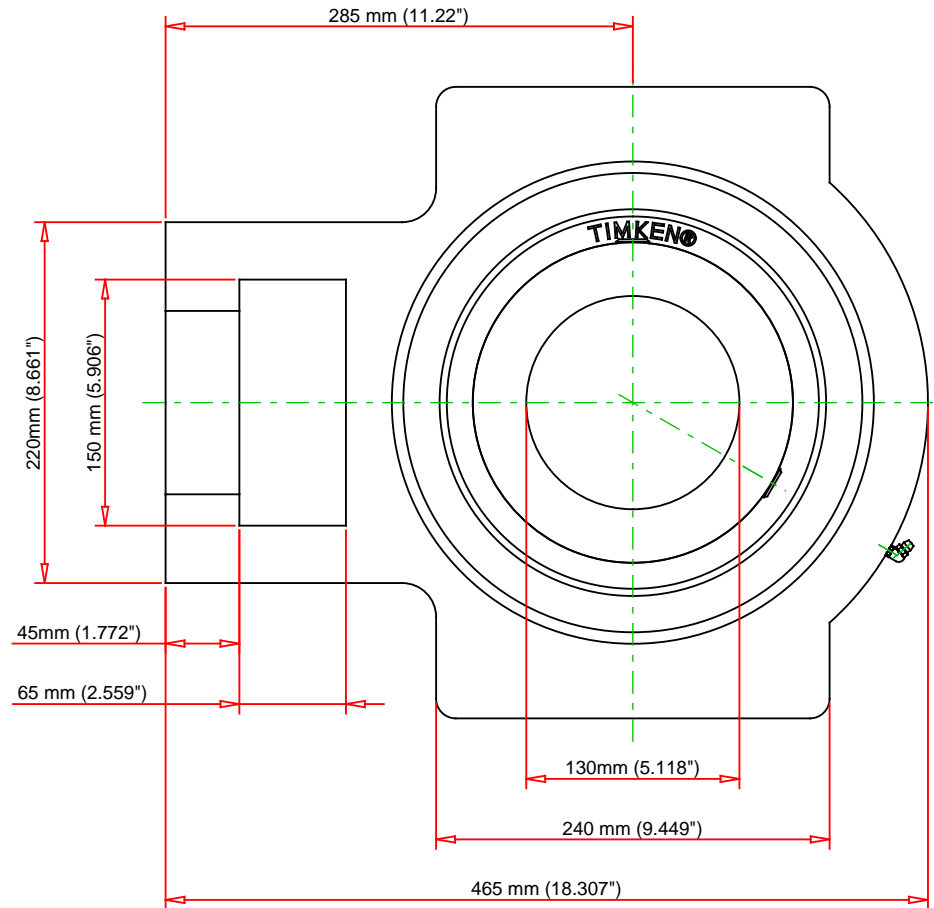
Housing Width A	150 mm 5.906 in
Slot Width A1	50 mm 1.969 in
Pocket Width A2	100 mm 3.937 in



Total Height H	385 mm 15.157 in
Pitch Height H1	350 mm
Height H2	220 mm
Total Length L	465 mm 18.307 in
Shaft Length L1	285 mm 11.22 in
Dimension L2	45 mm
Slot Length L3	240 mm 9.449 in
Adjustment Screw Bore N	75 mm 2.953 in
Opening Width N1	65 mm 2.559 in
Opening Height N2	150 mm 5.906 in
Inner Ring Width B	135 mm 5.315 in
Center of Bearing from End S	54 mm 2.126 in
Grease Nipple Size	B-R1/8

Basic Load Ratings

Static Load Rating	214000 N 48110 lbf
Dynamic Load Rating	229000 N 51482 lbf



UCT326

UCT 300 Take-Up Mounted Bearings - Set
Screw Locking

FOR DISCUSSION ONLY