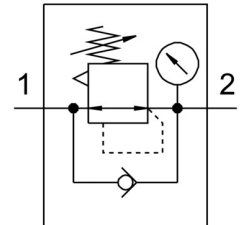


Pressure regulator VRPA-CM-Q6-E

Part number: 8086004

FESTO



Data sheet

| Feature | Value |
|---|--|
| Controller function | Output pressure constant With secondary venting With return flow function |
| Pneumatic connection, port 1 | QS-6 |
| Pneumatic connection, port 2 | QS-6 |
| Type of mounting | With through-hole |
| Standard nominal flow rate | 90 l/min |
| Ambient temperature | 0 °C ... 60 °C |
| Material housing | PBT |
| Operating medium | Compressed air to ISO 8573-1:2010 [7:4:4] |
| Mounting position | optional |
| Type of actuation | Manual |
| Adjustment component | Rotary knob with detent |
| Symbol | 00991558 |
| Pressure gauge (ANALOG) or Pressure display (DIGITAL) | With pressure gauge |
| Pressure regulation range | 0.1 MPa ... 0.8 MPa |
| Pressure regulation range | 1 bar ... 8 bar |
| Pressure regulation range | 14.5 psi ... 116 psi |
| Note on operating and pilot medium | Lubricated operation possible (in which case lubricated operation will always be required) |
| LABS (PWIS) conformity | VDMA24364-B2-L |
| Product weight | 23 g |
| Note on materials | RoHS-compliant |
| Material static seals | NBR |