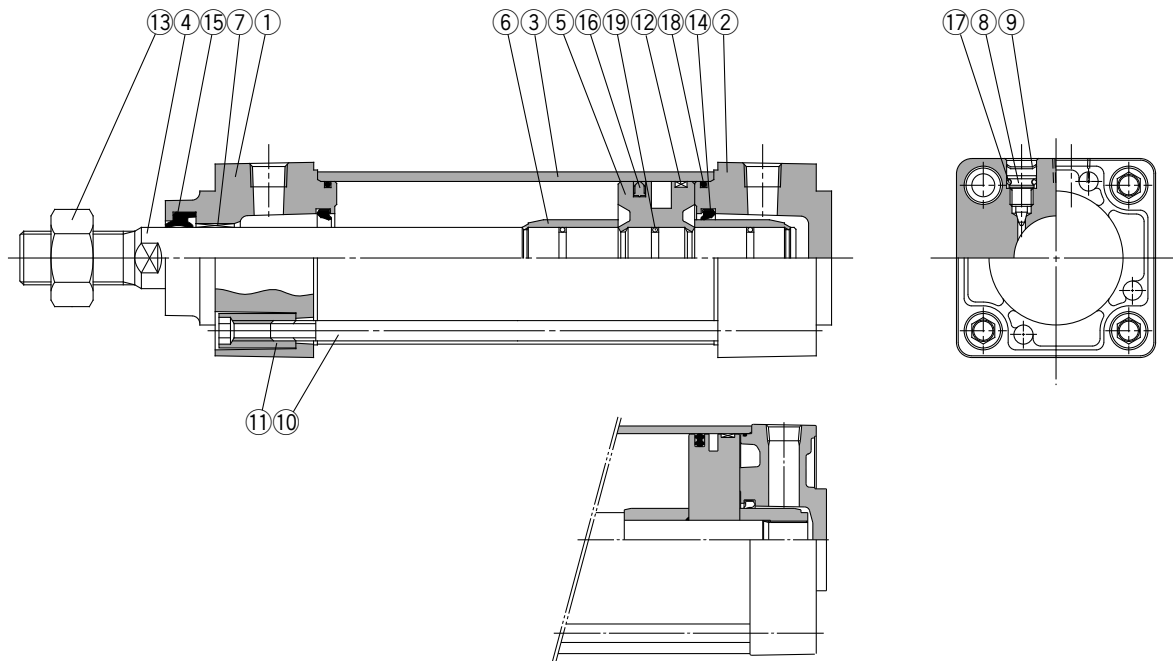


## Construction



MB125

## Component Parts

No.	Description	Material	Note
①	Rod cover	Aluminum die-cast	Metallic painted
②	Head cover	Aluminum die-cast	Metallic painted
③	Cylinder tube	Aluminum alloy	Hard anodized
④	Piston rod	Carbon steel	Hard chrome plated
⑤	Piston	Aluminum alloy	Chromated
⑥	Cushion ring	Brass	
⑦	Bushing	Lead bronze cast	
⑧	Cushion ring	Steel wire	Nickel plated
⑨	Retaining ring	Steel for spring	ø40 to ø100
⑩	Tie rod	Carbon steel	Zinc chromated
⑪	Tie rod nut	Carbon steel	Nickel plated
⑫	Wear ring	Resin	
⑬	Rod end nut	Carbon steel	Nickel plated

## Replacement Parts/Seal Kit

Bore size (mm)	Kit no.	Contents
32	MB32-PS	Set of the No. ⑭, ⑮, ⑯ and ⑰
40	MB40-PS	
50	MB50-PS	
63	MB63-PS	
80	MB80-PS	
100	MB100-PS	
125	MB125-PS	

\* Seal kits consist of items ⑭, ⑮, ⑯ and ⑰, and can be ordered by using the seal kit number corresponding to each bore size.

\* Trunnion type should not be disassembled. (Refer to page 328.)

\* Seal kit includes a grease pack (ø32 to 50: 10 g, ø63, 80: 20 g, ø100, 125: 30 g).

Order with the following part number when only the grease pack is needed.

**Grease pack part number: GR-S-010 (10 g), GR-S-020 (20 g)**

## Water Resistant Air Cylinder

Water resistant air cylinders are also available in Series MB, which are suitable for use on machine tools, where exposure to coolant is possible and applicable for food machinery and automobile washing equipment in an environment where water splashes. Please refer to page 899 for more information.

No.	Description	Material	Note
⑭ *	Cushion seal	Urethane	
⑮ *	Rod seal	NBR	
⑯ *	Piston seal	NBR	
⑰	Cushion valve seal	NBR	
⑱ *	Cylinder tube gasket	NBR	
⑲	Piston gasket	NBR	

## Copper/Fluorine-free

20 - MB Mounting bracket Bore size Port thread type - Stroke Suffix

↓ Copper/Fluorine-free

Copper material has been replaced with non-copper material to prevent generation of copper ions. This is to eliminate influence of copper ions and fluororesin upon color CRT.

## Specifications

<b>Action</b>	Double acting single rod
<b>Bore size</b>	ø32, ø40, ø50, ø63, ø80, ø100
<b>Max. operating pressure</b>	1.0 MPa
<b>Min. operating pressure</b>	0.05 MPa
<b>Cushion</b>	Air cushion *
<b>Piping</b>	Screw-in piping
<b>Operating piston speed</b>	50 to 1000 mm/s
<b>Mounting bracket</b>	Basic, Axial foot, Rod side flange, Head side flange, Single clevis, Double clevis, Center trunnion

\* Auto switch capable.

★ The cylinder should be operated within its allowable kinetic energy. (Refer to page 292.)

\* In case of types with no air cushion, a rubber bumper is used.

CJ1

CJP

CJ2

CM2

CG1

MB

MB1

CA2

CS1

CS2

D-□

-X□

Individual

-X□

Technical data