

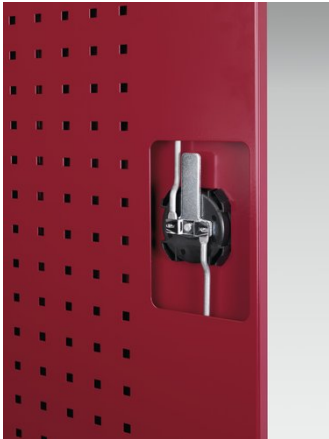
40021117. - cubio cupboard

Short Description

cubio cupboard with perfo doors, louvre back, 60 bins
WxDxH: 1050x650x2000mm

Product Images





Additional Information

| | |
|-----------------------|--|
| Description | cubio bin cupboard. Featuring a heavy duty, reinforced steel housing with up to 1 tonne total capacity with double, perfo panel lined, reinforced doors. With louvre backpanel and 60 piece bin kit. Finished in durable powder coat paint. WxDxH: 1050x650x2000mm |
| Width | 1050 |
| Depth | 650 |
| Height | 2000 |
| Customs tariff number | 94032080 |
| Product material | Sheet steel |
| Product surface | Powder coated |
| Door type | Perfo |
| Door height 1 | 1900 mm |

Product Options

| | |
|---------|-----------------|
| Colour: | Anthracite grey |
| | Crimson red |
| | Gentian blue |
| | Light grey |