



**The Timken Company**

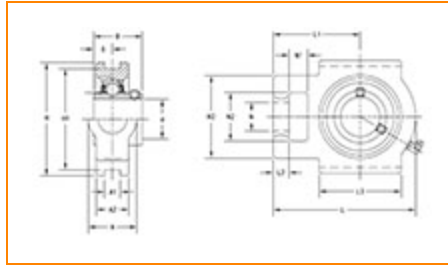
4500 Mt Pleasant St. NW

N. Canton, OH 44720

**Phone:** (234) 262-3000

**E-Mail:** [CustomerCAD@timken.com](mailto:CustomerCAD@timken.com) • **Web site:** [www.timken.com](http://www.timken.com)

## Part Number UCT322, UCT 300 Take-Up Mounted Bearings - Set Screw Locking



[Specifications](#) | [Dimensions](#) | [Basic Load Ratings](#)

### Specifications

<b>Bearing Number</b>	UC322
<b>Shaft Size d</b>	110 mm
<b>Locking Style</b>	Set Screw Locking
<b>Housing Construction</b>	Take-Up

### Dimensions

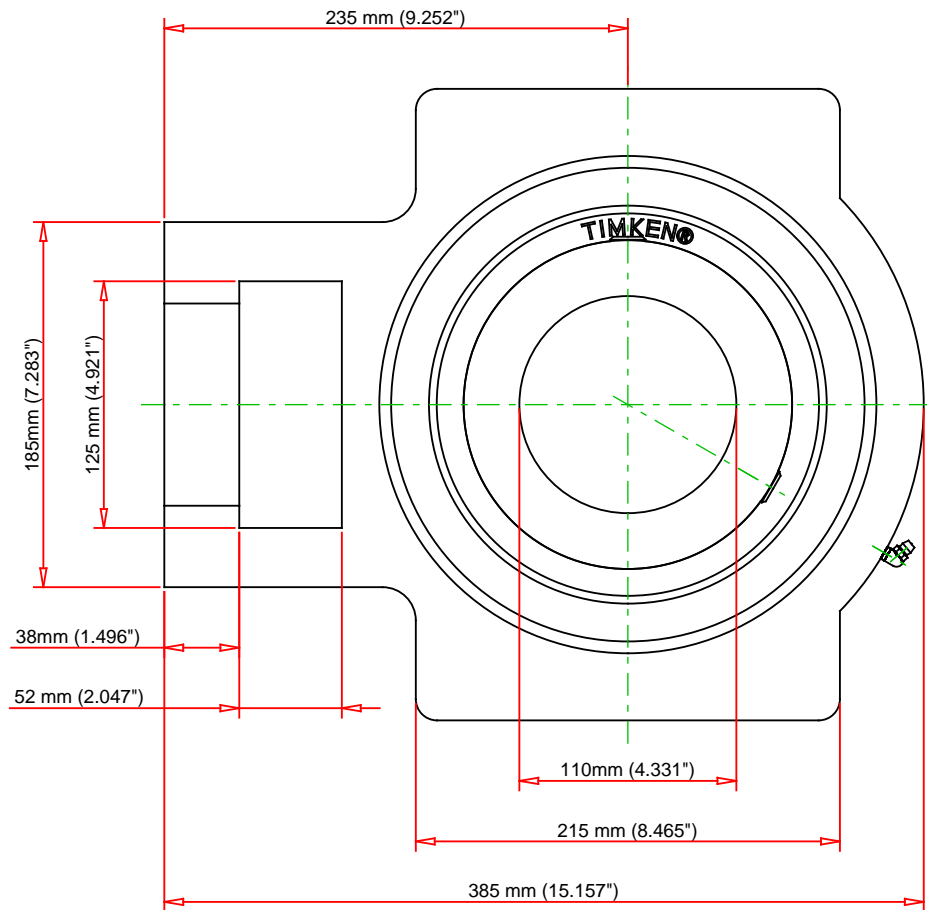
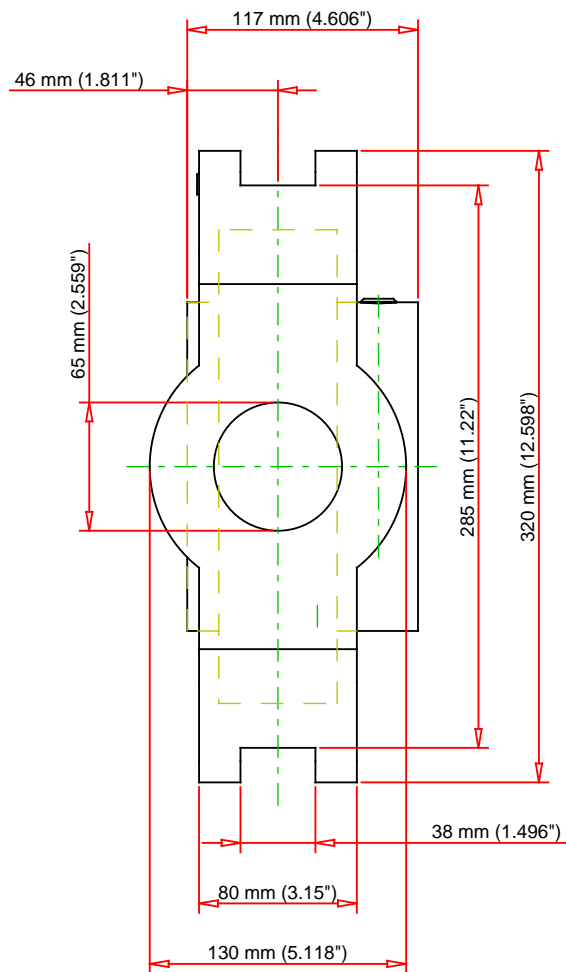
<b>Housing Width A</b>	130 mm 5.118 in
<b>Slot Width A1</b>	38 mm 1.496 in
<b>Pocket Width A2</b>	80 mm 3.15 in



<b>Total Height H</b>	320 mm 12.598 in
<b>Pitch Height H1</b>	285 mm
<b>Height H2</b>	185 mm
<b>Total Length L</b>	385 mm 15.157 in
<b>Shaft Length L1</b>	235 mm 9.252 in
<b>Dimension L2</b>	38 mm
<b>Slot Length L3</b>	215 mm 8.465 in
<b>Adjustment Screw Bore N</b>	65 mm 2.559 in
<b>Opening Width N1</b>	52 mm 2.047 in
<b>Opening Height N2</b>	125 mm 4.921 in
<b>Inner Ring Width B</b>	117 mm 4.606 in
<b>Center of Bearing from End S</b>	46 mm 1.811 in
<b>Grease Nipple Size</b>	B-R1/8

## Basic Load Ratings

<b>Static Load Rating</b>	180000 N 40466 lbf
<b>Dynamic Load Rating</b>	205000 N 46086 lbf



Bearing Number	UC322			
Load Ratings - C <sub>r</sub>	46086	lbf	205000	N
Load Ratings - C <sub>0r</sub>	40466	lbf	180000	N
Weight	87.5	lb	39.7	kg

**TIMKEN®**

THE TIMKEN COMPANY  
NORTH CANTON, OHIO USA

**UCT322**

UCT 300 Take-Up Mounted Bearings - Set  
Screw Locking

Every reasonable effort has been made to ensure the accuracy of the information contained in this writing, but no liability is accepted for errors, omissions or for any other reason.

**FOR DISCUSSION ONLY**