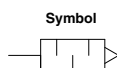


Silencer 38 dB (A): High Noise Reduction Type **ANB1 Series**

RoHS

ANB1 series <noise reduction effect: 38 dB (A)> that has a larger effective area with the same port size as ANA1 series. It is also available for common exhaust from manifolds, etc.



How to Order

ANB1-03

Port size

Symbol	Port size	Connection
01	1/8	Screw-in*
02	1/4	
03	3/8	
04	1/2	
06	3/4	
10	1	
12	1 1/4	
14	1 1/2	
C06	ø6 (Applicable One-touch fitting size)	One-touch fitting
C08	ø8 (Applicable One-touch fitting size)	
C10	ø10 (Applicable One-touch fitting size)	

* Only R is available.

Series

Symbol	Noise reduction
B1	38 dB (A)

Specifications

Fluid	Compressed air
Max. operating pressure ⁽¹⁾	1.0 MPa
Noise reduction	38 dB (A) ⁽²⁾
Ambient and fluid temperature	5 to 60°C

Note 1) It indicates the inlet pressure for solenoid valve.

Note 2) The value may vary, depending on the pneumatic circuit or pressure that is exhausted from the solenoid valve.

Note 3) The product can be used in temperatures -10 to 60°C if there is no risk of water droplets forming and freezing.

Refer to page 826 for Precautions on these products.

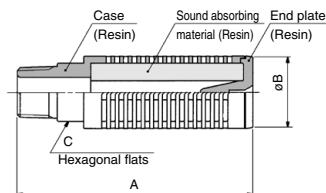
Performance/Dimensions (Screw-in connection)

Model	Port size R	Effective area (mm ²)	Sonic conductance C (dm ³ /(s·bar))	Recommended flow (m ³ /min (ANR))	Weight (g)	Dimensions (mm)		
						A	B	C
ANB1-01	1/8	15	3	1.2 or less	10	51	22	—
ANB1-02	1/4	35	7	2.7 or less	22	81	25	18
ANB1-03	3/8	60	12	3.8 or less	35	93	30	21
ANB1-04	1/2	90	18	7.0 or less	94	107	46	24
ANB1-06	3/4	160	32	12.0 or less	175	133	50	41
ANB1-10	1	280	56	20.0 or less	462	190	74	41
ANB1-12	1 1/4	450	90	32.0 or less	612	230	74	60
ANB1-14	1 1/2	610	122	45.0 or less	871	271	86	70

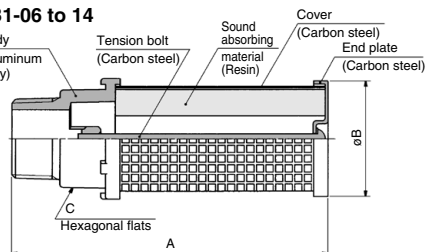
Note) Recommended flow rate is the flow at 0.5 MPa in the inlet pressure.

Construction/Parts/Dimensions

ANB1-01 to 04



ANB1-06 to 14

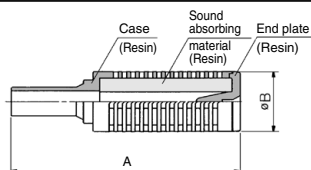


Performance/Dimensions (One-touch fitting connection)

Model	Applicable One-touch fitting size	Effective area (mm ²)	Recommended flow (m ³ /min (ANR))	Weight (g)	Dimensions (mm)	
					A	B
ANB1-C06	ø6	8	0.6 or less	5	52	16
ANB1-C08	ø8	13	1.0 or less	12	73	22
ANB1-C10	ø10	28	2.0 or less	28	94	25

Note) Recommended flow rate is the flow at 0.5 MPa in the inlet pressure.

Construction/Parts/Dimensions



AN

AMC

AMV

AMP

SFE