


**The Timken Company**

4500 Mt Pleasant St. NW

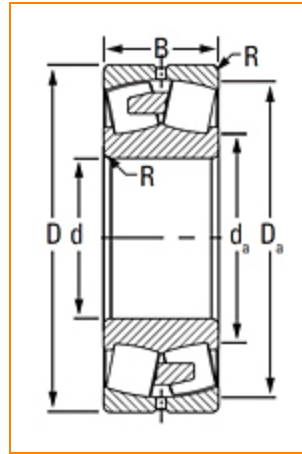
N. Canton, OH 44720

**Phone:** (234) 262-3000

**E-Mail:** [CustomerCAD@timken.com](mailto:CustomerCAD@timken.com) • **Web site:** [www.timken.com](http://www.timken.com)

## Part Number 24140EMBW33, Spherical Roller Bearings - Brass Cage

Spherical bearings are designed to manage high radial loads even when misalignment, poor lubrication, contamination, extreme speeds or critical application stresses are present.



[Specifications](#) | [Dimensions](#) | [Abutment and Fillet Dimensions](#) | [Basic Load Ratings](#) | [Factors](#)

### Specifications

<b>Design Unit</b>	Metric
<b>d - Bore</b>	200 mm
<b>Bearing Weight</b>	52.10 Kg 114.65 lb
<b>Cage Type</b>	EMB
<b>Cage Material</b>	Brass
<b>Superseded Part</b>	24140YMBW33

### Dimensions


**- Outer Diameter**

 340 mm  
13.3858 in

<b>B' - Inner Ring Width</b>	140 mm 5.5118 in
------------------------------	---------------------

<b>B - Outer Ring Width</b>	140 mm 5.5118 in
-----------------------------	---------------------

## Abutment and Fillet Dimensions

<b>R - Inner Ring "To Clear" Radius<sup>1</sup></b>	2.5 mm 0.100 in
---	--------------------

<b>r - Outer Ring "To Clear" Radius<sup>2</sup></b>	2.5 mm 0.1 in
---	------------------

<b>da - Inner Ring Backing Diameter</b>	226.000 mm 8.900 in
---	------------------------

<b>Da - Outer Ring Backing Diameter</b>	308 mm 12.1000 in
---	----------------------

## Basic Load Ratings

<b>C0 - Static Radial Rating</b>	2930000 N 658000 lbf
----------------------------------	-------------------------

<b>C1(2) - Dynamic Radial Rating (Two-Rows)</b>	2030000 N 456000 lbf
---	-------------------------

## Factors

<b>e - ISO Factor<sup>3</sup></b>	0.39
-----------------------------------	------

<b>Y0 - ISO Factor<sup>4</sup></b>	1.7
------------------------------------	-----

<b>Y1 - ISO Factor<sup>5</sup></b>	1.74
------------------------------------	------

<b>Y2 - ISO Factor<sup>6</sup></b>	2.59
------------------------------------	------

<b>Reference Thermal Speed Rating (Grease)</b>	790 rpm
--	---------

<b>Reference Thermal Speed Rating (Oil)<sup>7</sup></b>	850 rpm
<b>Cg - Geometry Factor<sup>8</sup></b>	0.097

<sup>1</sup> Maximum housing fillet radius that bearing corners will clear.

<sup>2</sup> Maximum shaft fillet radius that bearing corners will clear.

<sup>3</sup> These factors apply for both inch and metric calculations. Consult your Timken representative for instruction on use.

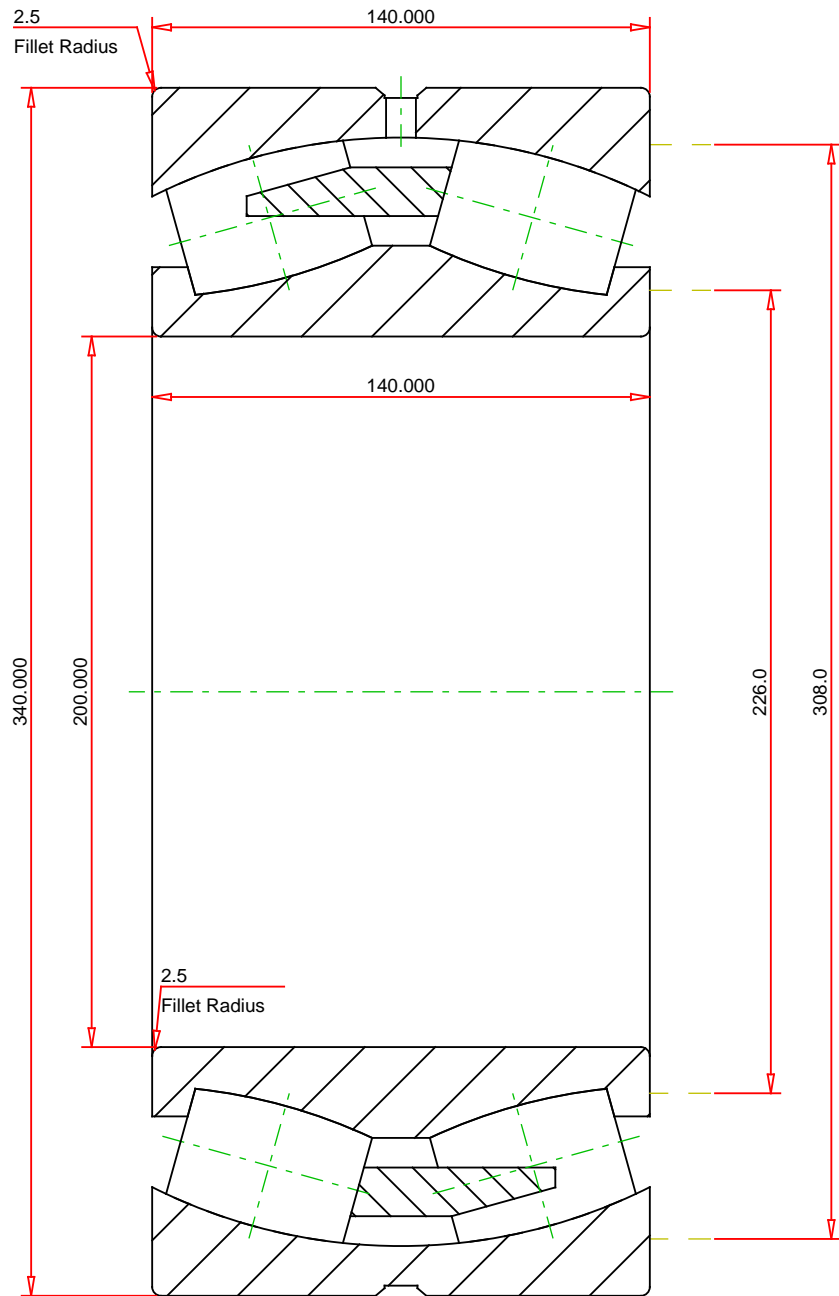
<sup>4</sup> These factors apply for both inch and metric calculations. See engineering

<sup>5</sup> These factors apply for both inch and metric calculations. Consult your Timken representative for instruction on use.

<sup>6</sup> These factors apply for both inch and metric calculations. Consult your Timken representative for instruction on use.

<sup>7</sup> See thermal speed ratings in the engineering section.

<sup>8</sup> Geometry constant for Lubrication Life Adjustment Factor a3l.



## METRIC UNITS

Number of Rollers Per Row	20	<div>kg</div>	<div>TIMKEN®</div>	<div>24140EMBW33</div> <div>SRB ASSEMBLY</div>						
ISO Factor e	0.39									
ISO Factor Y0	1.70									
ISO Factor Y1	1.74									
ISO Factor Y2	2.59									
Bearing Weight	52.1									
Cage Type	EMB									
Cage Material	Brass		<div>THE TIMKEN COMPANY</div> <div>NORTH CANTON, OHIO USA</div>		<div>Dynamic Radial Rating (Two Rows)</div> <div>Static Radial Rating</div>		<div>2030000</div> <div>2930000</div>		<div>N</div> <div>N</div>	

Every reasonable effort has been made to ensure the accuracy of the information contained in this writing, but no liability is accepted for errors, omissions or for any other reason.

FOR DISCUSSION ONLY