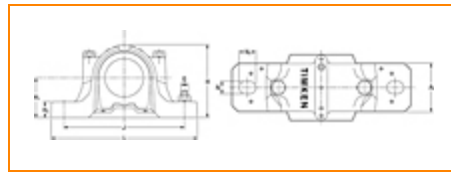




**The Timken Company**  
 4500 Mt Pleasant St. NW  
 N. Canton, OH 44720  
**Phone:** (234) 262-3000

**E-Mail:** [CustomerCAD@timken.com](mailto:CustomerCAD@timken.com) • **Web site:** [www.timken.com](http://www.timken.com)

## Housing – Bearing – Seal SNT 532 - 22232 - LO232, SNT Cylindrical Bore Plummer Block Housed Units



[Types of Components](#) | [Housing](#) | [Bearing](#) | [Dimensions](#) | [Specifications](#)

### Types of Components

Housing	SNT 532
Bearing	22232
Locating Rings (width x OD)	SR290X17
Seal Type	Labyrinth
Seal	LO232
End Cover <sup>1</sup>	EC532

### Housing

Material	Cast Iron
Bolt Qty	2
Housing Mass	54.5 Kg

## Bearing



Cage Type	EJ
C1 Dynamic Load Rating	1170
C0 Static Load Rating	1450
Max Oil Speed	2200
Max Grease Speed	1800

## Dimensions

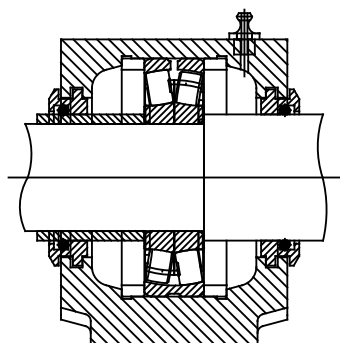
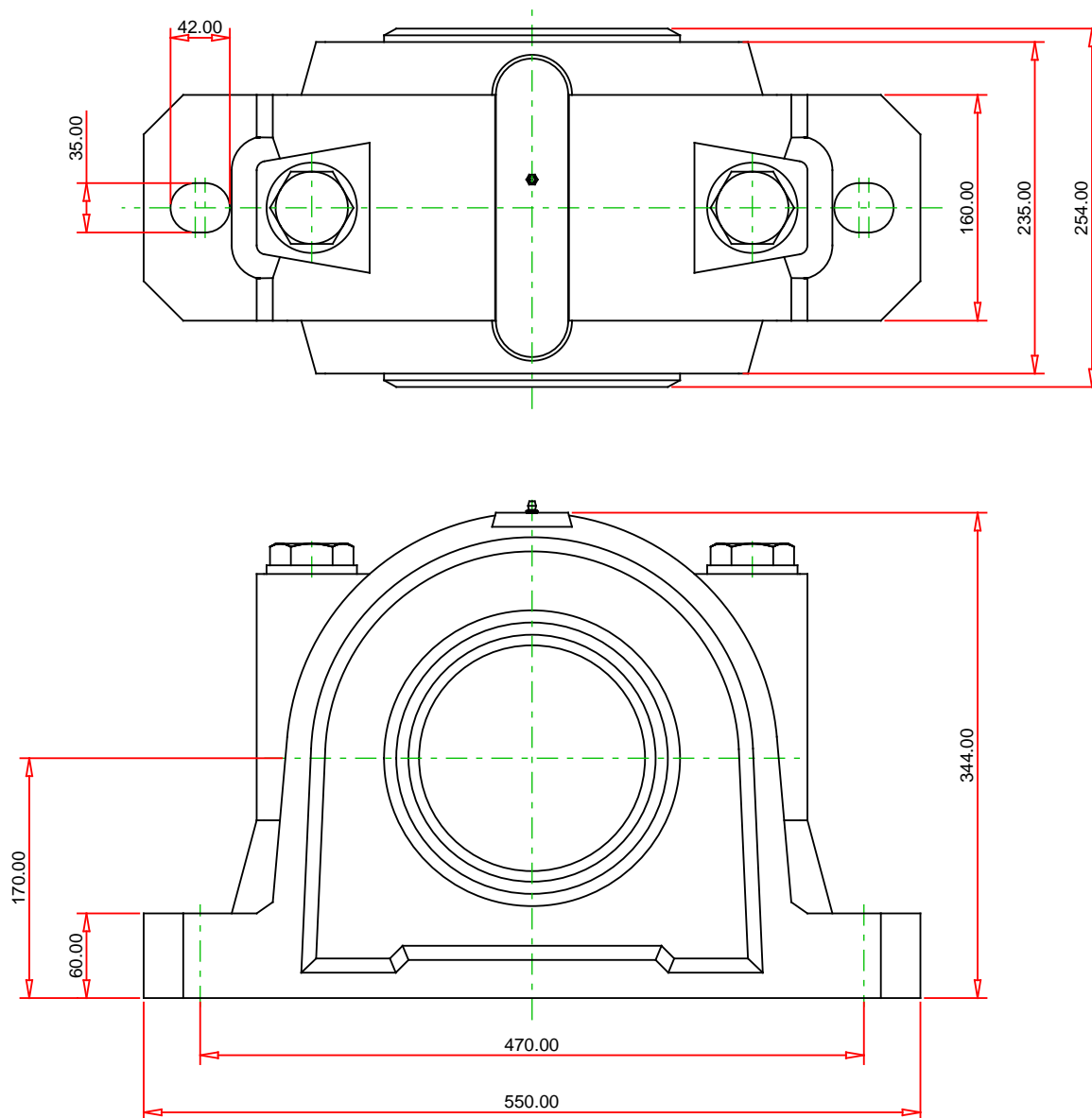


Shaft Diameter da	160 mm
Shaft Diameter db	175 mm
A	235.00 mm
A1	160 mm
A2	254 mm
G	M30
H	344 mm
H1	170 mm
H2	60.00 mm
Jmax	477 mm
Jmin	463 mm
J	470 mm
L	550 mm
N1	42 mm
N	35 mm

## Specifications

UPC Code	9999999999
Alternate Part Name	SNT532 - 22232 - LO232

<sup>1</sup> Two seals are required for a thru shaft application. One end cover can be used if application is not a thru shaft design. In this case, only one seal is required.



Note: Section View not to Scale

## METRIC UNITS

Housing SNT 532  
Bearing 22232  
Seal (Quantity 2) LO232  
Seal Type Labyrinth  
Locating Ring (Quantity 2) SR290X17

# TIMKEN®

**THE TIMKEN COMPANY**  
NORTH CANTON, OHIO USA

**SNT 532 - 22232 - LO232**  
SNT Cylindrical Bore Plummer Block Housed Units

C1 Dynamic Load Rating (2 rows)	1170 kN
C0 Static Load Rating	1450 kN
Max Oil Speed	2200 RPM
Max Grease Speed	1800 RPM
Material	Cast Iron

Every reasonable effort has been made to ensure the accuracy of the information contained in this writing, but no liability is accepted for errors, omissions or for any other reason.

**FOR DISCUSSION ONLY**