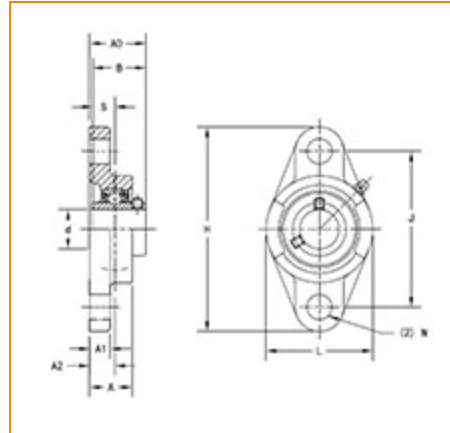




The Timken Company
 4500 Mt Pleasant St. NW
 N. Canton, OH 44720
 Phone: (234) 262-3000

E-Mail: CustomerCAD@timken.com • Web site: www.timken.com

Part Number UCFL205-16, UCFL 200 Two-Bolt Flanged Housed Units - Set Screw Locking



[Specifications](#) | [Dimensions](#) | [Basic Load Ratings](#)

Specifications

Bearing Number	UC205-16
Shaft Size d	1 in
Weight	1.4 lb 0.6 Kg
UPC Code	087796075283
Locking Style	Set Screw Locking
Housing Construction	Two-Bolt Flange

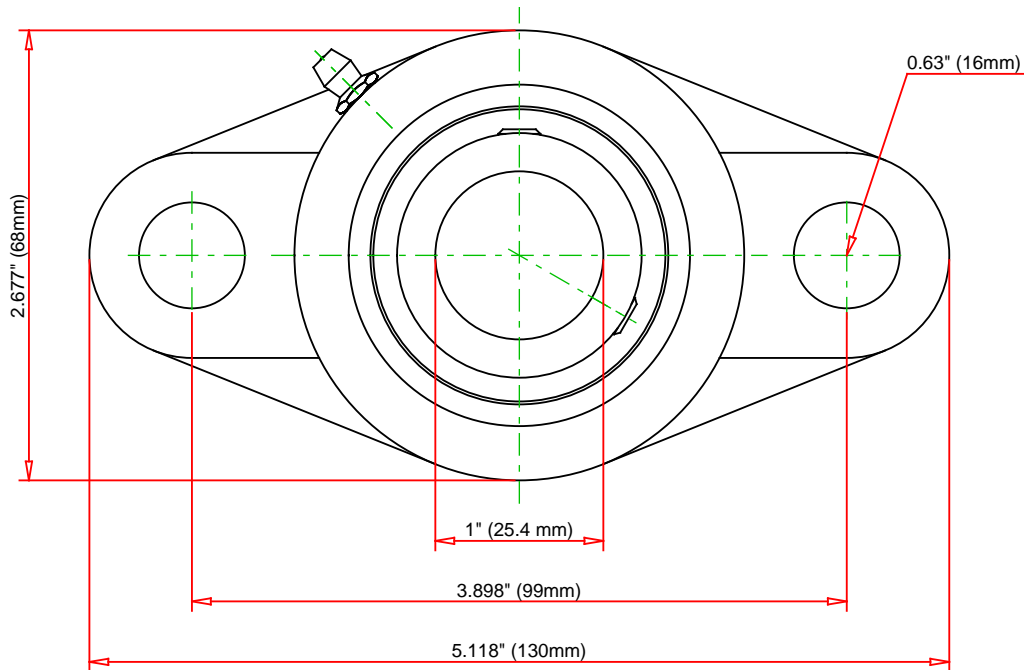
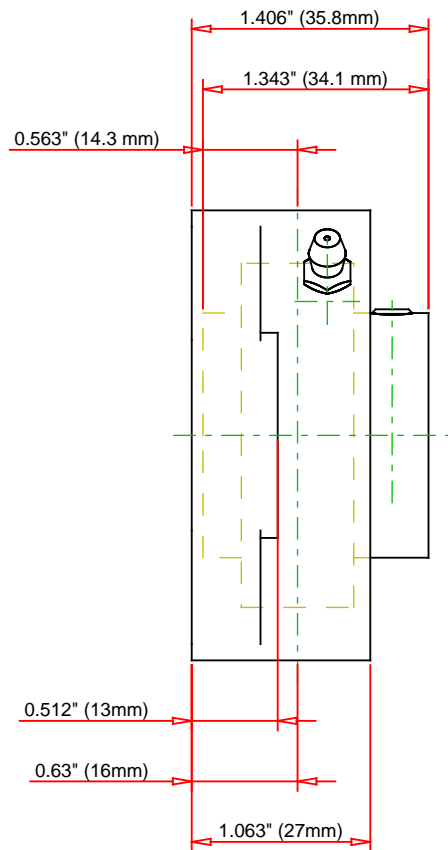
Dimensions

Total Length H	130.00 mm 5.118 in
Total Height L	68.00 mm 2.677 in

Housing Width A	27.00 mm 1.063 in
Bolt Hole Spacing J	99.00 mm 3.898 in
Bolt Hole Size N	16 mm 0.630 in
Flange Thickness A1	13.00 mm 0.512 in
Center of Bearing from Housing End A2	16.00 mm 0.630 in
Inner Ring Width B	34.10 mm 1.343 in
Center of Bearing from Bearing End S	14.3 mm 0.563 in
Bolt Size	M14
Dimension A0	1.406 in 35.8 mm

Basic Load Ratings

Static Load Rating	1765 lbf 7850 N
Dynamic Load Rating	3147 lbf 14000 N



Bearing Number	UC205-16			
Load Ratings - C _r	3147	lbf	14000	N
Load Ratings - C _{0r}	1765	lbf	7850	N
Weight	1.4	lb	0.6	kg
Bolt Size	M14			

TIMKEN

THE TIMKEN COMPANY
NORTH CANTON, OHIO USA

UCFL205-16
UCFL 200 Two-Bolt Flanged Housed Units
- Set Screw Locking

Every reasonable effort has been made to ensure the accuracy of the information contained in this writing, but no liability is accepted for errors, omissions or for any other reason.

FOR DISCUSSION ONLY