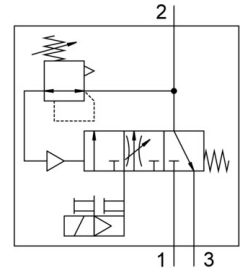


Soft start/quick exhaust valve MS6-SV-1/2-C-10V24-S

Part number: 8001469

FESTO



Data sheet

| Feature | Value |
|------------------------------|--|
| Series | MS MS |
| For use in the food industry | See supplementary material information |
| Size | 6 6 |
| Width dimension | 62 mm |
| Type code | MS6-SV MS6-SV |
| Safety function | Exhausting Prevention of unexpected start-up (pressurization) Exhausting Prevention of unexpected start-up (pressurization) |
| Performance Level (PL) | Avoidance of unexpected start-up (pressurization)/category 1, performance level c Exhaust/category 1, performance level c Exhaust/category 1, performance level c Avoidance of unexpected start-up (pressurization)/category 1, performance level c |
| Note on forced dynamization | Switching frequency at least once a month Switching frequency at least once a month |
| Design | Piston gate valve Piston gate valve |
| Underlap | yes |
| Actuation type | Electrical |
| Pilot air supply port | Internal Internal |
| Sealing principle | Soft |
| Exhaust air function | Without flow control option Without flow control option |
| Manual override | At pilot control air solenoid valve: non-detenting, at soft start/quick exhaust valve: detenting, self-resetting At pilot control air solenoid valve: non-detenting, at soft start/quick exhaust valve: detenting, self-resetting |
| Reset method | Mechanical spring |
| Type of control | Pilot-controlled Pilot-controlled |
| Symbol | 00995813 |

| Feature | Value |
|--|--|
| Valve function | 3/2, closed, monostable Pressure build-up function 3/2, closed, monostable Pressure build-up function |
| Operating pressure | 3 bar ... 10 bar |
| C value | 23.2 l/sbar |
| b-value | 0.4 |
| Standard nominal flow rate | 5700 l/min |
| Standard flow rate exhaust 6→0 bar | 7600 l/min |
| Switching time off | 65 ms |
| On switching time | 370 ms |
| Duty cycle | 100% |
| Coil characteristics | 24 V DC: 1.8 W 24 V DC: 1.8 W |
| Permissible voltage fluctuations | +/- 10 % |
| Operating medium | Compressed air as per ISO 8573-1:2010 [7:4:4] Compressed air as per ISO 8573-1:2010 [7:4:4] |
| Information on operating and pilot media | Operation with oil lubrication possible (required for further use) Operation with oil lubrication possible (required for further use) |
| Corrosion resistance class (CRC) | 2 - Moderate corrosion stress 2 - Moderate corrosion stress |
| Note on materials | RoHS-compliant RoHS-compliant |
| Degree of protection | IP65 With plug socket IP65 With plug socket |
| Temperature of medium | 0 °C ... 60 °C |
| Ambient temperature | 0 °C ... 60 °C |
| Storage temperature | -10 °C ... 60 °C |
| Shock resistance | Shock test with severity level 2 as per FN 942017-5 and EN 60068-2-27 Shock test with severity level 2 as per FN 942017-5 and EN 60068-2-27 |
| Vibration resistance | Transport application test with severity level 2 as per FN 942017-4 and EN 60068-2-6 Transport application test with severity level 2 as per FN 942017-4 and EN 60068-2-6 |
| CE marking (see declaration of conformity) | as per EU machinery directive as per EU machinery directive |
| Type of mounting | Optionally: Line installation With accessories Line installation With accessories Optionally: |
| Mounting position | Any Any |
| Product weight | 1006 g |
| Pneumatic connection 1 | G1/2 G1/2 |
| Pneumatic connection 2 | G1/2 G1/2 |
| Pneumatic connection 3 | G3/4 G3/4 |
| Electrical connection | Plug 2-pin as per EN 175301-803 Form C 2-pin Form C Plug as per EN 175301-803 |

| Feature | Value |
|---------------------|--|
| Housing material | Die-cast aluminum Die-cast aluminum |
| Seals material | NBR NBR |
| Piston rod material | High-alloy stainless steel High-alloy stainless steel |