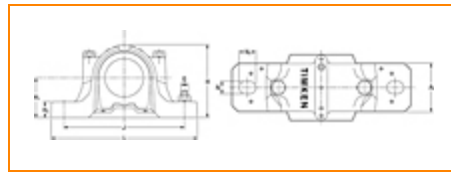




**The Timken Company**  
 4500 Mt Pleasant St. NW  
 N. Canton, OH 44720  
**Phone:** (234) 262-3000

**E-Mail:** [CustomerCAD@timken.com](mailto:CustomerCAD@timken.com) • **Web site:** [www.timken.com](http://www.timken.com)

## Housing – Bearing – Seal SNT 510-608 - 22308 - VR308, SNT Cylindrical Bore Plummer Block Housed Units



[Types of Components](#) | [Housing](#) | [Bearing](#) | [Dimensions](#) | [Specifications](#)

### Types of Components

Housing	SNT 510-608
Bearing	22308
Locating Rings (width x OD)	SR90X4
Seal Type	V-ring
Seal	VR308
End Cover <sup>1</sup>	EC510-608

### Housing

Material	Cast Iron
Bolt Qty	2
Housing Mass	3.2 Kg

## Bearing



Cage Type	EJ
C1 Dynamic Load Rating	155
C0 Static Load Rating	147
Max Oil Speed	6700
Max Grease Speed	5600

## Dimensions



Shaft Diameter da	40 mm
Shaft Diameter db	50 mm
A	90.00 mm
A1	60 mm
G	M12
H	113.00 mm
H1	60.0 mm
H2	25.0 mm
Jmax	175 mm
Jmin	165 mm
J	170.00 mm
L	205 mm
N1	20.00 mm
N	15 mm

## Specifications

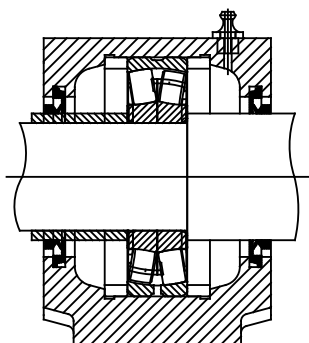
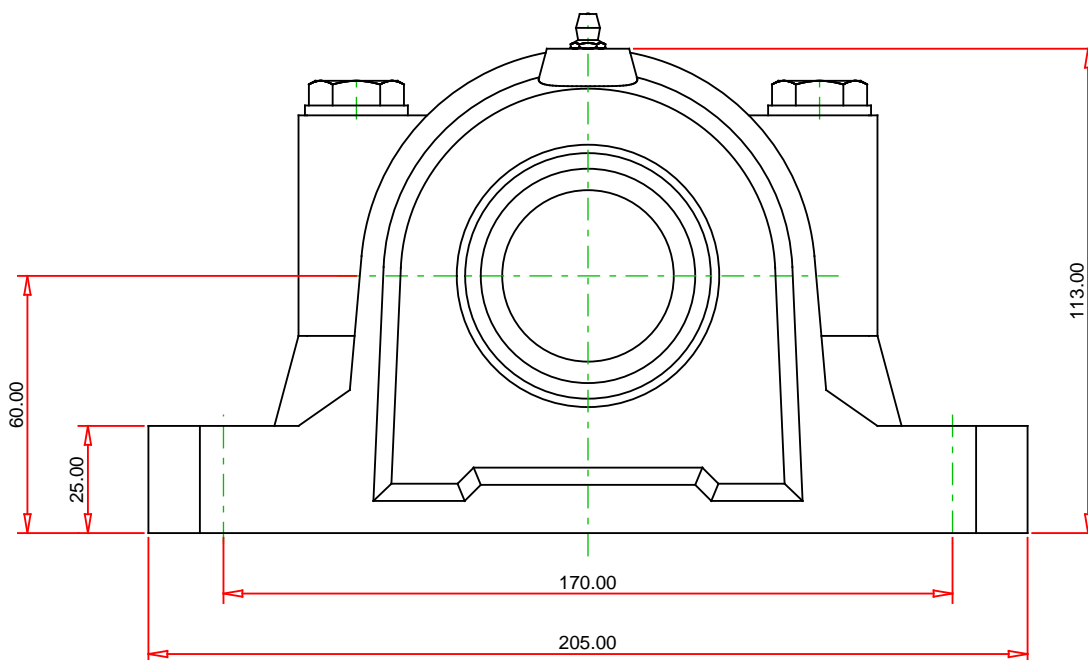
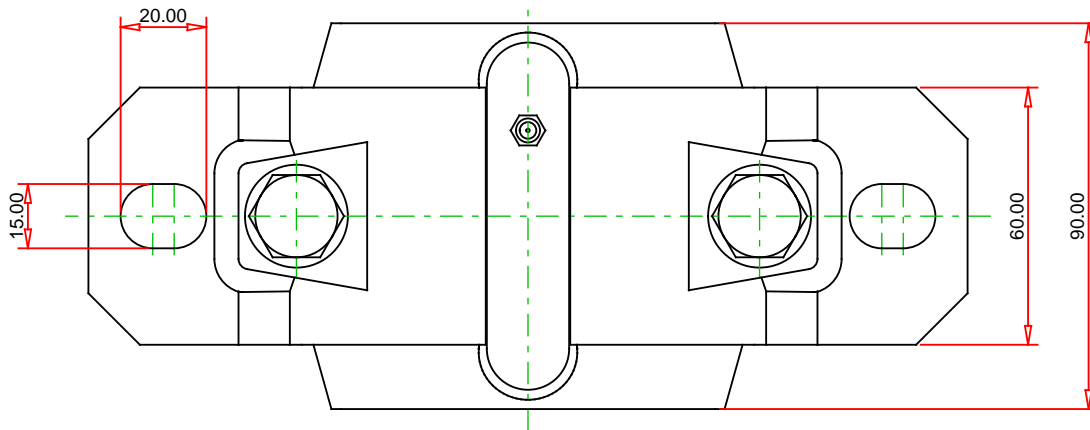
UPC Code

9999999999

Alternate Part Name

SNT510-608 - 22308 - VR308

<sup>1</sup> Two seals are required for a thru shaft application. One end cover can be used if application is not a thru shaft design. In this case, only one seal is required.



Note: Section View not to Scale

## METRIC UNITS

Housing SNT 510-608  
Bearing 22308  
Seal (Quantity 2) VR308  
Seal Type V-ring  
Locating Ring (Quantity 2) SR90X4

# TIMKEN®

**THE TIMKEN COMPANY**  
NORTH CANTON, OHIO USA

**SNT 510-608 - 22308 - VR308**  
SNT Cylindrical Bore Plummer Block Housed Units

C1 Dynamic Load Rating (2 rows)	155 kN
C0 Static Load Rating	147 kN
Max Oil Speed	6700 RPM
Max Grease Speed	5600 RPM
Material	Cast Iron

Every reasonable effort has been made to ensure the accuracy of the information contained in this writing, but no liability is accepted for errors, omissions or for any other reason.

**FOR DISCUSSION ONLY**