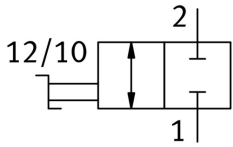
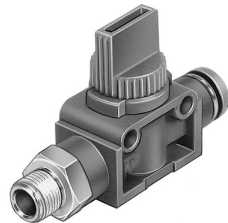


# Shut-off valve HE-2-1/8-QS-6

Part number: 153471

FESTO



## Data sheet

General operating condition

Feature	Value
Valve function	2/2 double solenoid
Pneumatic connection, port 1	R1/8
Pneumatic connection, port 2	QS-6
Type of actuation	Manual
Type of mounting	Either: Direct mounting via through-hole Direct mounting via thread
Standard nominal flow rate	279.9 l/min
Nominal size	3.2 mm
Operating pressure	-0.095 MPa ... 1 MPa
Operating pressure	-0.95 bar ... 10 bar
Ambient temperature	0 °C ... 60 °C
Material housing	PBT-reinforced
Operating medium	Compressed air to ISO 8573-1:2010 [7:--]
Sealing principle	Soft
Mounting position	optional
Design	Piston gate valve
Type of piloting	Direct
Flow direction	Reversible
Symbol	00997328
Note on operating and pilot medium	Lubricated operation possible (in which case lubricated operation will always be required)
Corrosion resistance class CRC	2 - Moderate corrosion stress
LABS (PWIS) conformity	VDMA24364-B1/B2-L
Media temperature	0 °C ... 60 °C
Product weight	29 g
Material screwed plug	Nickel-plated brass
Note on materials	RoHS-compliant
Material seals	NBR