

Filter regulators MS2-LFR, MS series

Type codes

FESTO

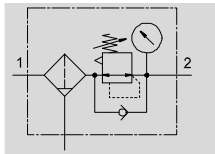
		MS	2	-	LFR	-	M5	-	D6	-	AR	-	BAR	-	C	-	M	-	B
Series																			
MS	Standard service unit																		
Size																			
2	Grid dimension 25 mm																		
Service function																			
LFR	Filter regulator																		
Pneumatic connection																			
M5	Female thread M5																		
QS6	Push-in connector for tubing O.D. 6 mm																		
Pressure regulation range																			
D6	Pressure regulation range 0.5 ... 7 bar																		
Pressure gauge/adaptor																			
AR	Pressure gauge																		
A8	Adapter for EN pressure gauge 1/8, without pressure gauge																		
Pressure gauge scale																			
	None																		
BAR	Display unit [bar/psi]																		
MPA	Display unit [MPa]																		
Grade of filtration																			
C	5 µm																		
Condensate drain																			
M	Manual rotary																		
Version																			
B	Basic																		

Filter regulators MS2-LFR, MS series

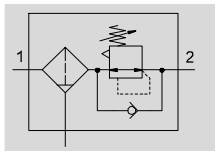
Technical data




FESTO

With pressure gauge



Without pressure gauge



-  - Flow rate
140 ... 310 l/min
-  - Temperature range
-5 ... +50 °C
-  - Operating pressure
1 ... 10 bar



General technical data		
	With pressure gauge	With adapter for EN pressure gauge 1/8, without pressure gauge
Pneumatic connection 1, 2	M5 QS-6	
Design	Filter regulator with pressure gauge	Filter regulator without pressure gauge
Regulating function	Output pressure constant, with return flow action, with secondary venting	
Type of mounting	With accessories In-line installation Front panel mounting	
Mounting position	Vertical ±5°	
Grade of filtration [µm]	5	
Air quality class at the outlet	Compressed air to ISO 8573-1:2010 [6:4:4]	
Condensate drain	Manual rotary	
Actuator lock	Rotary knob with detent	
Pressure regulation range [bar]	0.5 ... 7	
Max. pressure hysteresis [bar]	0.25	
Pressure indicator	With pressure gauge	G1/8 prepared
Max. condensate volume [ml]	3	

Characteristic flow rate values		
Pneumatic connection 1, 2	M5	QS-6
Standard nominal flow rate [l/min] q _N ¹⁾	140	310

1) Measured at p₁ = 10 bar and p₂ = 6 bar, Δp = 1 bar

Filter regulators MS4/MS6-LFR, MS series

FESTO

Type codes

		MS	6	-	LFR	-	1/2	-	D7	-	E	R	M	-	AS
Series															
MS	Standard service unit														
Size															
4	Grid dimension 40 mm														
6	Grid dimension 62 mm														
Service function															
LFR	Filter regulator														
Pneumatic connection															
MS4															
1/8	Female thread G1/8														
1/4	Female thread G1/4														
MS6															
1/4	Female thread G1/4														
3/8	Female thread G3/8														
1/2	Female thread G1/2														
Pressure regulation range															
D6	Pressure regulation range 0.3 ... 7 bar														
D7	Pressure regulation range 0.5 ... 12 bar														
Grade of filtration															
C	5 µm														
E	40 µm														
Bowl guard															
R	Plastic bowl guard														
U	Integrated as metal bowl														
Condensate drain															
M	Manual rotary														
V	Fully automatic														
Security															
AS	Rotary knob with detent, lockable via accessories														

Additional variants can be ordered using the modular system → 30

- Pneumatic connection
- Pressure regulation range
- Condensate drain
- Pressure gauge alternatives
- Alternative pressure gauge scale
- Secondary venting
- Rotary knob
- Security
- Type of mounting
- EU certification
- UL certification
- Flow direction