



The Timken Company

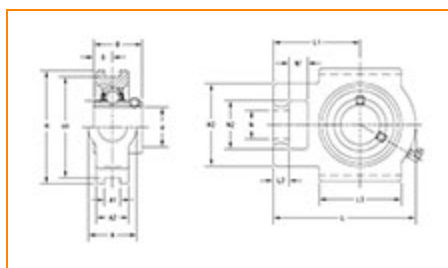
4500 Mt Pleasant St. NW

N. Canton, OH 44720

Phone: (234) 262-3000

E-Mail: CustomerCAD@timken.com • **Web site:** www.timken.com

Part Number UCT317, UCT 300 Take-Up Mounted Bearings - Set Screw Locking



[Specifications](#) | [Dimensions](#) | [Basic Load Ratings](#)

Specifications

Bearing Number	UC317
Shaft Size d	85 mm
Locking Style	Set Screw Locking
Housing Construction	Take-Up

Dimensions

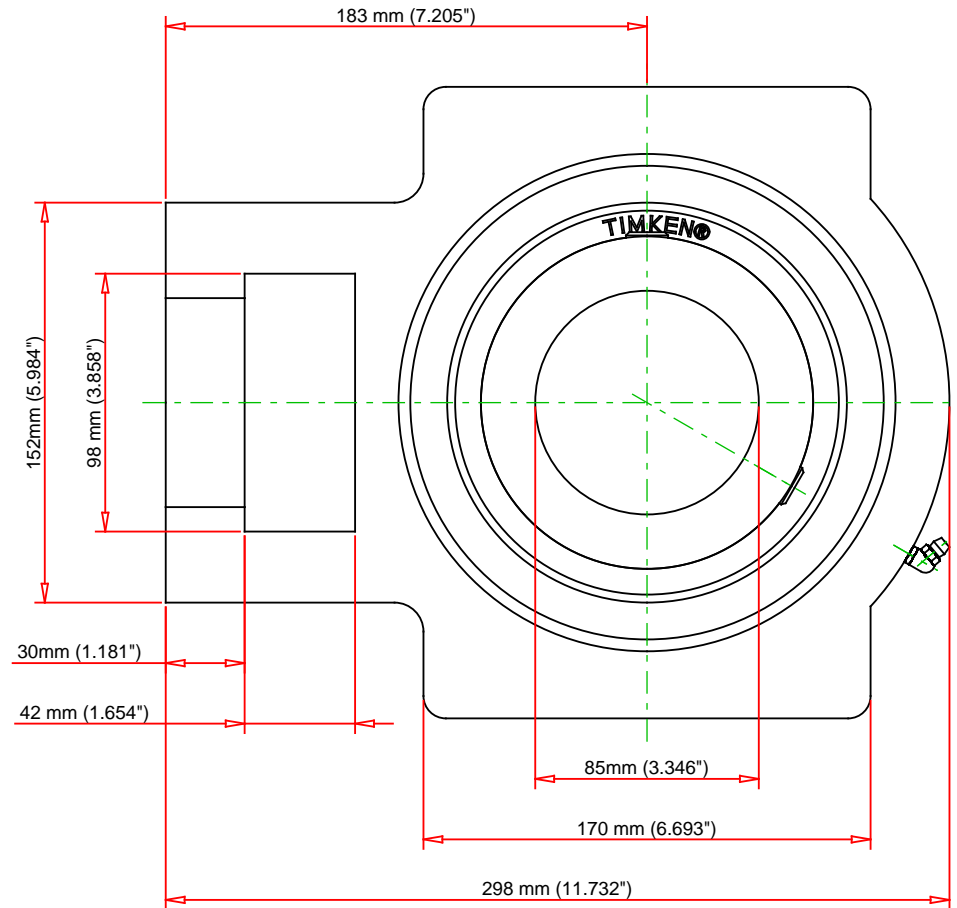
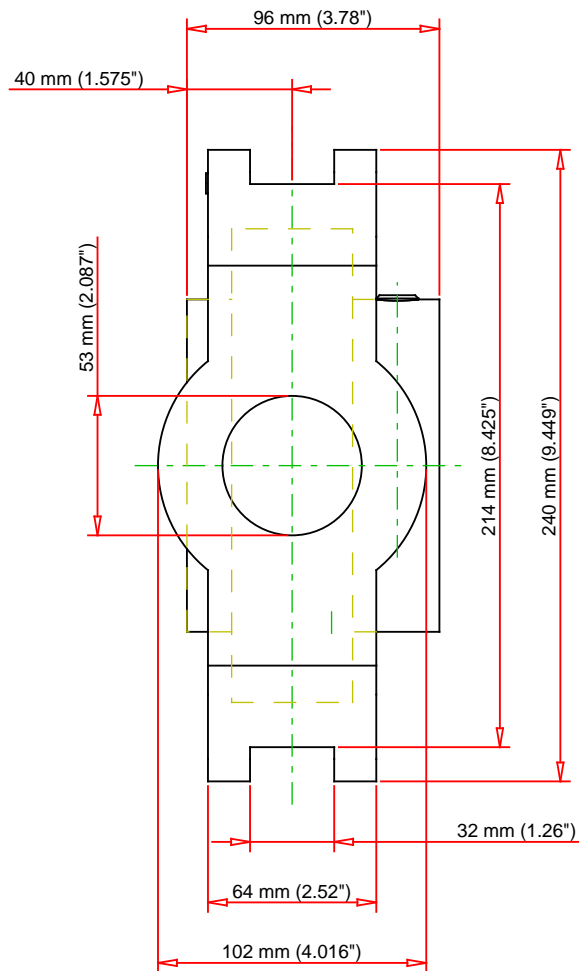
Housing Width A	102 mm 4.016 in
Slot Width A1	32 mm 1.26 in
Pocket Width A2	64 mm 2.52 in



Total Height H	240 mm 9.449 in
Pitch Height H1	214 mm
Height H2	152 mm
Total Length L	298 mm 11.732 in
Shaft Length L1	183 mm 7.205 in
Dimension L2	30 mm
Slot Length L3	170 mm 6.693 in
Adjustment Screw Bore N	53 mm 2.087 in
Opening Width N1	42 mm 1.654 in
Opening Height N2	98 mm 3.858 in
Inner Ring Width B	96 mm 3.780 in
Center of Bearing from End S	40 mm 1.575 in
Grease Nipple Size	B-R1/8

Basic Load Ratings

Static Load Rating	96800 N 21762 lbf
Dynamic Load Rating	133000 N 29900 lbf



Bearing Number	UC317			
Load Ratings - C _r	29900	lbf	133000	N
Load Ratings - C _{0r}	21762	lbf	96800	N
Weight	41.9	lb	19	kg

TIMKEN

THE TIMKEN COMPANY
NORTH CANTON, OHIO USA

UCT317

UCT 300 Take-Up Mounted Bearings - Set
Screw Locking

Every reasonable effort has been made to ensure the accuracy of the information contained in this writing, but no liability is accepted for errors, omissions or for any other reason.

FOR DISCUSSION ONLY