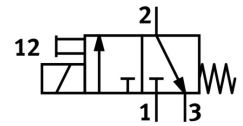
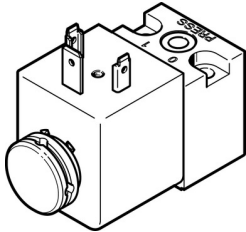



# Pilot valve MDH-3/2-24DC

Part number: 119600

FESTO



 [General operating condition](#)

## Data sheet

| Feature                            | Value  |
|------------------------------------|--|
| Valve function                     | 3/2-way, closed, monostable  |
| Type of actuation                  | Electric   |
| Construction width                 | 30 mm  |
| Standard nominal flow rate         | 50 l/min   |
| pneumatic working port             | Sub-base size 30 mm to ISO 15218   |
| Operating voltage                  | 24V DC<br>48V AC   |
| Operating pressure                 | 0.1 MPa ... 1.6 MPa  |
| Operating pressure                 | 1 bar ... 16 bar   |
| Operating pressure                 | 14.5 psi ... 232 psi   |
| Design                             | Poppet seat  |
| Type of reset                      | Mechanical spring  |
| Degree of protection               | IP65   |
| Nominal size                       | 1.3 mm   |
| Grid dimension                     | 42 mm  |
| Exhaust-air function               | Without flow control option  |
| Based on standard                  | ISO 15218  |
| Sealing principle                  | Soft   |
| Mounting position                  | optional   |
| Conforms to standard               | ISO 15218  |
| Manual override                    | Non-detenting  |
| Type of piloting                   | Direct   |
| Flow direction                     | Non-reversible   |
| Symbol                             | 00991308   |
| lap                                | Underlap   |
| Switching time off                 | 9 ms   |
| Switching time on                  | 11 ms  |
| Duty cycle                         | 100%   |
| Characteristic coil data           | 24 V DC: 6.8 W<br>48 V AC: 50 Hz, pick-up power 14.5 VA, holding power 9.9 VA<br>53 V AC: 60 Hz, pick-up power 15.0 VA, holding power 9.3 VA |
| Permissible voltage fluctuations   | +/- 10 %   |
| Operating medium                   | Compressed air to ISO 8573-1:2010 [7:4:4]  |
| Note on operating and pilot medium | Lubricated operation possible (in which case lubricated operation will always be required)   |
| Corrosion resistance class CRC     | 2 - Moderate corrosion stress  |
| LABS (PWIS) conformity             | VDMA24364-B2-L   |

| Feature                      | Value                            |
|------------------------------|----------------------------------|
| Media temperature            | -15 °C ... 80 °C                 |
| Ambient temperature          | -15 °C ... 50 °C                 |
| Product weight               | 140 g                            |
| Electrical connection        | Type A<br>To DIN EN 175301-803   |
| Type of mounting             | On sub-base<br>With through-hole |
| Pneumatic connection, port 1 | Sub-base                         |
| Pneumatic connection, port 2 | Sub-base                         |
| Pneumatic connection, port 3 | Not ducted                       |
| Note on materials            | RoHS-compliant                   |
| Material seals               | FPM                              |