



The Timken Company

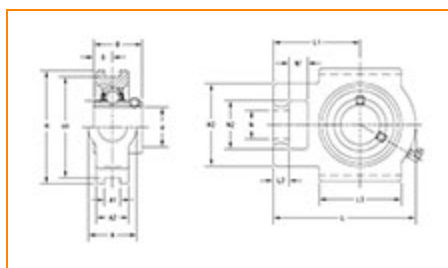
4500 Mt Pleasant St. NW

N. Canton, OH 44720

Phone: (234) 262-3000

E-Mail: CustomerCAD@timken.com • **Web site:** www.timken.com

Part Number UCT316, UCT 300 Take-Up Mounted Bearings - Set Screw Locking



[Specifications](#) | [Dimensions](#) | [Basic Load Ratings](#)

Specifications

Bearing Number	UC316
Shaft Size d	80 mm
Locking Style	Set Screw Locking
Housing Construction	Take-Up

Dimensions

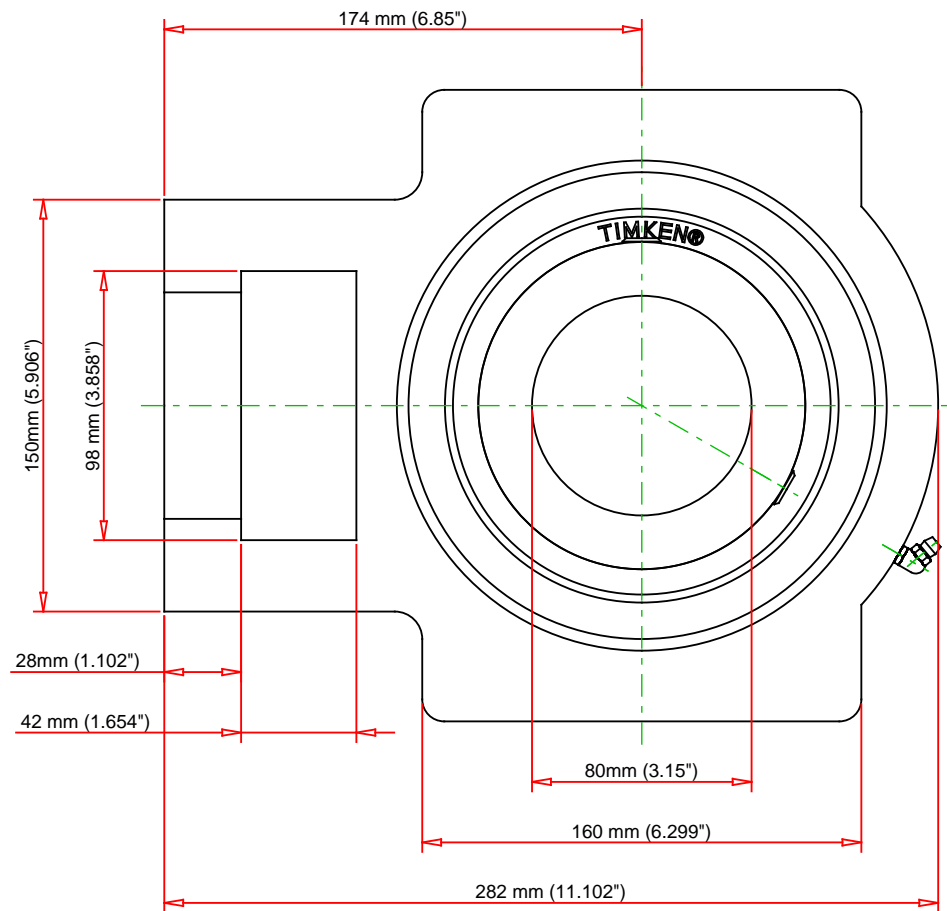
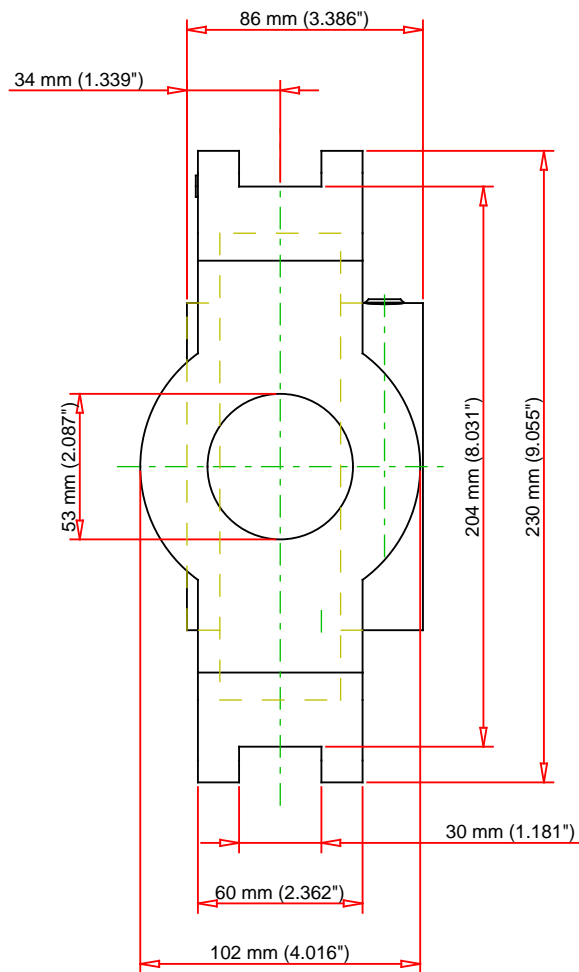
Housing Width A	102 mm 4.016 in
Slot Width A1	30 mm 1.181 in
Slot Width A2	60 mm 2.362 in



Total Height H	230 mm 9.055 in
Pitch Height H1	204 mm
Height H2	150 mm
Total Length L	282 mm 11.102 in
Shaft Length L1	174 mm 6.85 in
Dimension L2	28 mm
Slot Length L3	160 mm 6.299 in
Adjustment Screw Bore N	53 mm 2.087 in
Opening Width N1	42 mm 1.654 in
Opening Height N2	98 mm 3.858 in
Inner Ring Width B	86 mm 3.386 in
Center of Bearing from End S	34 mm 1.339 in
Grease Nipple Size	B-R1/8

Basic Load Ratings

Static Load Rating	86700 N 19491 lbf
Dynamic Load Rating	123000 N 27652 lbf



Bearing Number	UCT316			
Load Ratings - C _r	27652	lbf	123000	N
Load Ratings - C _{0r}	19491	lbf	86700	N
Weight	35.7	lb	16.2	kg

TIMKEN

THE TIMKEN COMPANY
NORTH CANTON, OHIO USA

UCT316

UCT 300 Take-Up Mounted Bearings - Set
Screw Locking

Every reasonable effort has been made to ensure the accuracy of the information contained in this writing, but no liability is accepted for errors, omissions or for any other reason.

FOR DISCUSSION ONLY