

Series 1, 3, 4 and VMS manually operated valves

Series 1, 3 and 4: 3/2-, 5/2- and 5/3-way CC, CO; ports G1/8, G1/4
Series VMS: 3/2-way; ports M5, G1/8, G1/4, G3/8, G1/2 and G3/4



Series 3 manual valves (G1/8) and Series 4 (G1/4), 3/2-, 5/2- and 5/3-way, are available with several devices designed to satisfy different needs. Series 1 is provided with two devices: pushbutton (3/2-way) and lever (3/2 and 5/2-way). Series VMS valves are 3/2-way slide valves which are available with ports M5, G1/8, G1/4, G3/8, G1/2 and G3/4.

The 3/2-way valves Series 3 and 4 are normally closed when 1 is the inlet and they can also be normally open when 3 is the inlet. Series 3 and 4 5/2-way valves can be supplied via ports 3 and 5 with two different pressures, if a cylinder has to be operated using a delivery pressure which is different from the return pressure.

GENERAL DATA

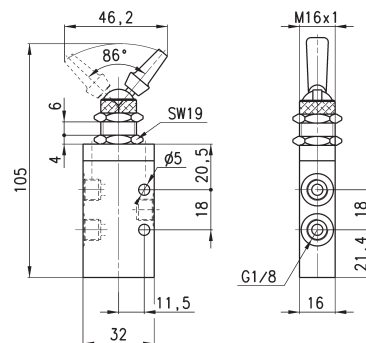
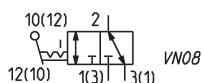
Construction	Series 3 and 4: spool-type Series 1: poppet-type Series VMS: slide
Function	Series 1, 3 and 4: 3/2 - 5/2 - 5/3 ways CC CO Series VMS: 3/2-way
Materials	aluminium body, stainless steel spool, brass poppet, NBR seals
Ports	Series 1, 3 and 4: G1/8, G1/4 Series VMS: M5, G1/8, G1/4, G3/8, G1/2, G3/4
Ambient temperature	0°C ÷ 60°C
Medium temperature	0°C ÷ 50°C
Operating pressure	see the single models
Fluid	Filtered air, without lubrication. If lubricated air is used, it is recommended to use ISO VG32 oil. Once applied the lubrication should never be interrupted.

SERIES 1, 3, 4 CODING EXAMPLE

3	3	8	-	900
---	---	---	---	-----

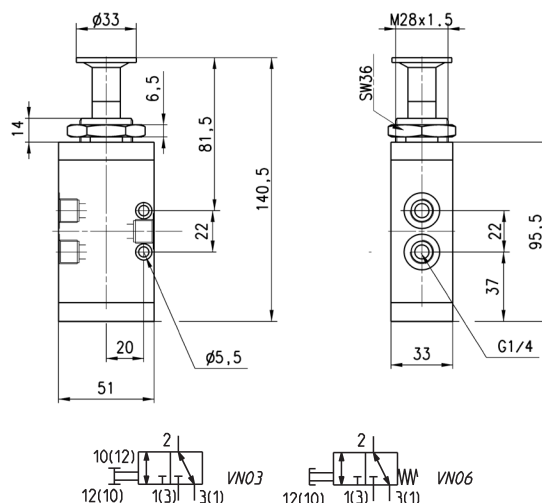
3	SERIES: 1 3 4
5	FUNCTION: 3 = 3/2-way NC 5 = 5/2-way 6 = 5/3-way CC 7 = 5/3-way CO
8	PORTS: 8 = G1/8 4 = G1/4
900	RESETTING: 895 = pushbutton, monostable, black 896 = pushbutton, monostable, green 897 = pushbutton, monostable, green 900 = lever, bistable 905 = lever, monostable 910 = knob, bistable 915 = knob, monostable 935 = digital monostable 975 = palm-switch, monostable, black 976 = palm-switch, monostable, green 977 = palm-switch, monostable, red 990 = switch, bistable

Valve Mod. 338-990



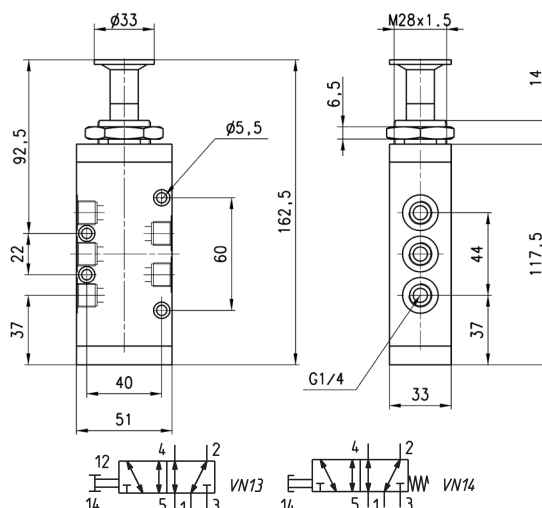
Mod.	Operating pressure (bar)	Flow (Nl/min)	Actuating force (N)
338-990	-0.9 ÷ 10	700	18

Valves Mod. 434-91...



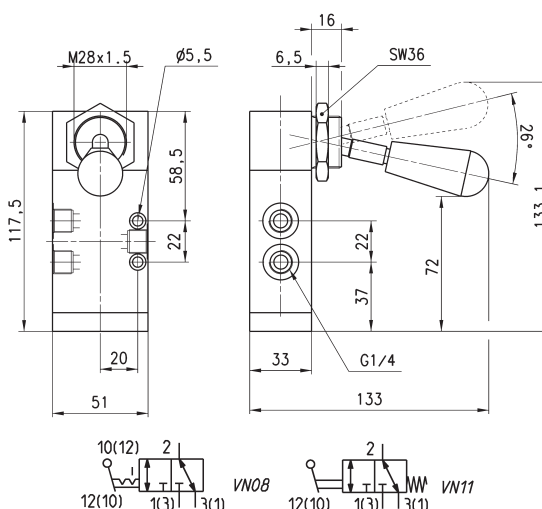
Mod.	Operating pressure (bar)	Flow (NI/min)	Actuating force (N)	Symbol
434-910	-0.9 ÷ 10	1250	10	VN03
434-915	-0.9 ÷ 10	1250	37	VN06

Valves Mod. 454-91...



Mod.	Operating pressure (bar)	Flow (NI/min)	Actuating force (N)	Symbol
454-910	-0.9 ÷ 10	1250	10	VN13
454-915	-0.9 ÷ 10	1250	37	VN14

Valves Mod. 434-90...



Mod.	Operating pressure (bar)	Flow (NI/min)	Actuating force (N)	Symbol
434-900	-0.9 ÷ 10	1250	5	VN08
434-905	-0.9 ÷ 10	1250	37	VN11