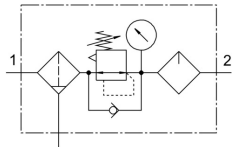


Air preparation combination unit MSB4

Part number: 531029

FESTO



Data sheet

Overall data sheet – Individual values depend upon your configuration.

Feature	Value
Size	4 4
For use in the food industry	See supplementary material information
Type code	MSB4 MSB4
Series	MS MS
Actuation type	Electrical Manual Pneumatic Manual Pneumatic
Actuator lock	Rotary knob with integrated lock Rotary knob with integrated lock
Mounting position	Vertical +/- 5° Any Any Vertical +/- 5°
Grade of filtration	0.01 µm ... 40 µm
Condensate drain	Fully automatic Semi-automatic Manually rotating Manually rotating Semi-automatic

Feature	Value
Design	Shut off valve Fiber filter Soft start valve Active carbon filter Pressure regulator with pressure gauge Sinter filter with centrifugal separator with non-return function Membrane dryer Filter regulator without pressure gauge Proportional standard oil mist lubricator Filter regulator with pressure gauge Branching module Branching module Active carbon filter Pressure regulator with pressure gauge Soft start valve Shut off valve Fiber filter Filter regulator with pressure gauge Filter regulator without pressure gauge Membrane dryer Proportional standard oil mist lubricator Sinter filter with centrifugal separator with non-return function
Controller function	Outlet pressure constant With primary pressure compensation With return flow function With secondary exhausting With primary pressure compensation With secondary exhausting With return flow function
Bowl guard	Plastic bowl guard
Symbol	00991761 00991761
Differential pressure display	Visual display With pressure sensor With pressure sensor
Pressure gauge	with pressure gauge with pressure sensor with pressure sensor with pressure gauge
Operating pressure	1.5 bar ... 14 bar
Pressure regulation range	1 bar ... 12 bar
Standard nominal flow rate	800 l/min ... 1400 l/min
Coil characteristics	24 V DC: 1.8 W 24 V DC: 1.5 W 230 V AC: 50/60 Hz, initial power 3.0 VA, holding power 2.4 VA 110 V AC: 50/60 Hz, initial power 3.0 VA, holding power 2.4 VA 110 V AC: 50/60 Hz, initial power 3.0 VA, holding power 2.4 VA 230 V AC: 50/60 Hz, initial power 3.0 VA, holding power 2.4 VA 24 V DC: 1.5 W 24 V DC: 1.8 W
ATEX category gas	II 2G II 3G II 2G II 3G
Type of ignition protection for gas	Ex nA IIC T4 X Gc Ex h IIC T6 Gb X Ex h IIC T6 Gb X Ex nA IIC T4 X Gc
ATEX category for dust	II 2D II 3D II 2D II 3D
Type of (ignition) protection for dust	Ex tc IIIC T105°C X Dc IP65 Ex h IIIC T60°C Db X Ex h IIIC T60°C Db X Ex tc IIIC T105°C X Dc IP65

Feature	Value
Explosion prevention and protection	Zone 1 (ATEX) Zone 2 (ATEX) Zone 22 (ATEX) Zone 21 (ATEX) Zone 1 (ATEX) Zone 2 (ATEX) Zone 21 (ATEX) Zone 22 (ATEX)
Information on operating and pilot media	Operation with oil lubrication possible (required for further use) Operation with oil lubrication possible (required for further use)
CE marking (see declaration of conformity)	As per EU EMC directive As per EU low voltage directive as per EU explosion protection directive (ATEX) As per EU EMC directive as per EU explosion protection directive (ATEX) As per EU low voltage directive
Corrosion resistance class (CRC)	2 - Moderate corrosion stress 2 - Moderate corrosion stress
Storage temperature	-10 °C ... 60 °C
Temperature of medium	-10 °C ... 60 °C
Ambient temperature	-10 °C ... 60 °C
Certification	c UL us - Recognized (OL) c UL us - Recognized (OL)
Type of mounting	With accessories With accessories
Pneumatic connection 1	G1/8 G1/4 G1/8 G1/4
Pneumatic connection 2	G1/4 G1/8 G1/4 G1/8
Pneumatic connection 3	G1/4 G1/4
Housing material	Die-cast aluminum Die-cast aluminum
Material of bowl	PC PC