

Bellows suction cup S.B50NP50.XXX.00



- ▶ The lifting movement can be used to separate small and thin objects.
- ▶ Only lightweight objects should be handled when the lifting force is parallel to the surface of the object, in order to achieve good precision and safe lifting movement.
- ▶ Suitable for level adjustment. Several short bellows in one lifting device can handle objects with height differences and varying shapes, for example embossed or corrugated plates.

Lifting force

| Description | 20 -kPa | Vertical 60 -kPa | 90 -kPa | 20 -kPa | Parallel 60 -kPa | 90 -kPa |
|----------------|---------|---------------------|---------|---------|---------------------|---------|
| Lifting forces | 33.0 N | 65.0 N | 82.0 N | 24.2 N | 51.2 N | 60.8 N |

Technical data

| Description | Unit | Value |
|------------------------------|-----------------|--|
| Internal volume | cm ³ | 32.0 |
| Weight | g | 5 |
| Min. curve radius -60 kPa | mm | 30.0 |
| Max. vertical movement | mm | 18.2 |
| Application | - | Dry sheet metal, Corrugated / cardboard, |
| Material | - | Nitrile-PVC (NPV) |
| Colour | - | Black |
| Suction cup model | - | B |
| Suction cup shape | - | Bellows |
| Hardness °Shore A | - | 50 °Shore A |
| Temperature range (°C) | °C | 0 – 90 |
| Actuated outer diameter, Max | mm | 60.5 |

Material resistance , Nitrile-PVC, NPV

| Description | Value |
|--------------------|-----------|
| Alcohol | Good |
| Concentrated Acids | Poor |
| Ethanol | N/A |
| Hydrolysis | Good |
| Methanol | N/A |
| Oil | Fair |
| Oxidation | Good |
| Petrol | Fair |
| Wear Resistance | Excellent |
| Weather & Ozone | Good |

Values specified in data sheet are tested at:

- Room temperature (20°C [68°F] ± 3°C [5.5°F]).
- Standard atmosphere (101.3 [29.9 inHg] ± 1.0 kPa [0.3 inHg]).

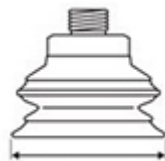
- Relative humidity 20-70%.
- Compressed air quality, DIN ISO 8573-1 class 4.



Internal volume



Max. vertical movement

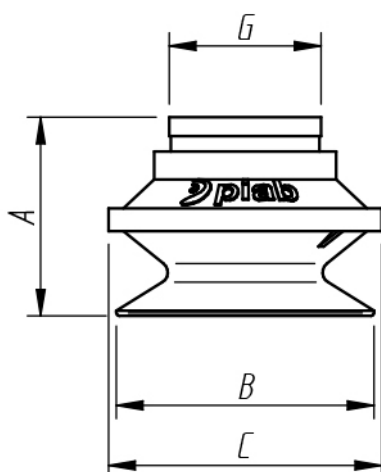


Diameter (lip)



Min. curve radius -60 kPa

Dimensional drawing



| Product code | Description | Unit | Value |
|--------------|---------------------------|-----------|--------------|
| A | Building height | mm [inch] | 35.3 [1.39"] |
| B | Diameter (lip) | mm [inch] | 53.0 [2.09"] |
| C | Diameter (bellow) | mm [inch] | 58.0 [2.28"] |
| G | Diameter (upper part cup) | mm [inch] | 27.0 [1.06"] |

Ordering information

| Description | Product code |
|--|------------------|
| Bellows suction cup , Ø 50mm, Nitrile-PVC, NPV, 50 °Shore A, None, None, None, None | S.B50NP50.XXX.00 |

Ordering information, spare parts

| Description | Art. No. |
|-----------------------------|----------|
| Suction cup B50 Nitrile-PVC | 0101107 |

Ordering information, accessories

| Description | Art. No. |
|--|----------|
| Fitting 1/8" NPSF female, 50 | 3250017 |
| Fitting 1/8" NPSF female, 50, with mesh filter | 0101154 |
| Fitting 1/8" NPSF female, 50, with dual flow control valve | 3251012 |
| Fitting 1/8" NPSF female, 50, with cone valve | 0101157 |
| Fitting 1/8" NPSF female, 50, PA | 3150198 |
| Fitting G1/4" male, 50, with mesh filter | 3250092 |
| Fitting G1/4" male, with mesh filter and dual flow control valve | 3251013 |
| Fitting G3/8" male, 50, with mesh filter | 3250087 |
| Fitting G3/8" male, 50, with mesh filter and dual flow control valve | 3251015 |
| Fitting 5x1/8" NPSF female, 50 | 0100262 |
| Fitting 5x1/8" NPSF female, 50, with dual flow control valve | 3251017 |
| Fitting 1/4" NPT male, with mesh filter | 3250094 |
| Fitting 3/8" NPT male, with mesh filter | 3250090 |
| Fitting 1/4" NPT male, with dual flow control valve | 3251014 |
| Fitting 3/8" NPT male, with dual flow control valve | 3251016 |
| Fitting G1/8" male, 50, with mesh filter | 0200715 |
| Suction cup B50 Silicone | 0101108 |
| Suction cup B50 HNBR | 0108165 |
| Suction cup B50MF Thermoelastic polyurethane | 0101114 |
| Suction cup B50 Silicone FCM | 0200409 |