

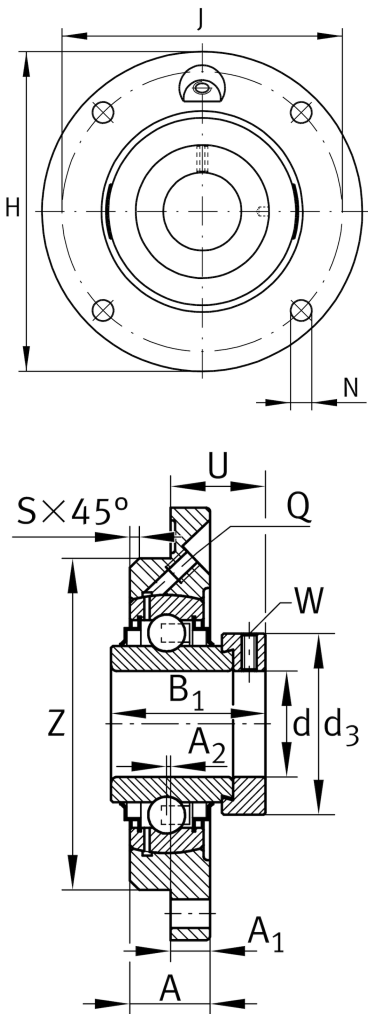
RME20-XL-N

Flanged housing unit

Schaeffler ID:
0096429350000

Housing units RME, four-bolt flanged housing units, cast iron, centring spigot, eccentric locking collar, R seals

Technical information



Main Dimensions & Performance Data

d	20 mm	Bore diameter
H	100 mm	Height flange
B ₁	43,7 mm	Locking collar total width
U	24,6 mm	Total height unit
C _r	13.600 N	Basic dynamic load rating, radial
C _{0r}	6.600 N	Basic static load rating, radial
C _{ur}	345 N	Fatigue load limit, radial
	0,57 kg	Weight

Mounting dimensions

J	78 mm	Pitch circle diameter (holes)
N	9 mm	Fixing bore
Z	62 mm	Diameter spigot
	h8	Diameter spigot clearance
n	4	Number of screwing holes

Dimensions

A	17 mm	Height housing
A ₁	8 mm	Thickness of flange
A ₂	2 mm	Distance raceway
S	2 mm	Chamfer width
Q	M6	Connection thread lubrication

Additional information		
d	20 mm	Inner diameter bearing
d	20 mm	Inner diameter bearing
d	0,79 in	Inner diameter bearing
d	13/16 in	Inner diameter bearing
D	47 mm	Outer diameter bearing
D	47 mm	Outer diameter bearing
D	1,85 in	Outer diameter bearing
H	100 mm	Housing height
H	100 mm	Housing height
H	3,94 in	Housing height
L	100 mm	Housing length
L	100 mm	Housing length
L	3,94 in	Housing length
B	43,7 mm	Housing width
B	43,7 mm	Housing width
B	1,72 in	Housing width
h	50 mm	Height bearing seat
h	50 mm	Height bearing seat
h	1,97 in	Height bearing seat
m	78 mm	distance between mounting bolt centerlines (length)
m	78 mm	distance between mounting bolt centerlines (length)
m	3,07 in	distance between mounting bolt centerlines (length)
C _r	13.600 N	Basic dynamic load rating
C _r	3.057,55 lbf	Basic dynamic load rating
C _r	13.600 N	Basic dynamic load rating
C _{0r}	6.600 N	Basic static load rating
C _{0r}	1.483,81 lbf	Basic static load rating
C _{0r}	6.600 N	Basic static load rating
	RME20-XL-N	Housing in kit
	GE20-XL-KRR-B	Bearing in kit

Additional information		
	1	Number of housings
	GG.ME04	Housing
	GE20-XL-KRR-B	Bearing designation
	KASK04	Protecting cap

Temperature range

T _{min}	-20 °C	Operating temperature min.
T _{max}	120 °C	Operating temperature max.