

G-MAT BUBBLE ANTI-FATIGUE MAT

Item #	EAN	Dimensions
865534	3660338198250	90x90cm tile
867998	3660338218927	90x90cm duckboard
865535	3660338198267	Female edge
865536	3660338198274	Male edge

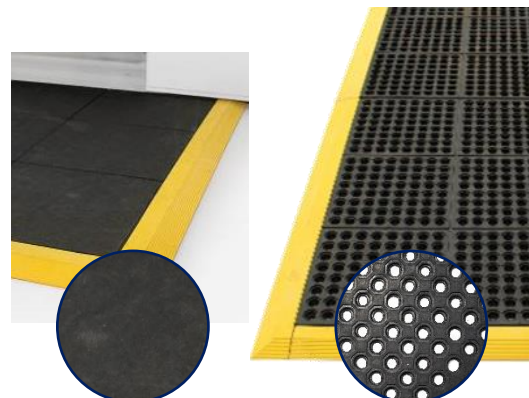
Description

The modular solution to adapt to any industrial needs in terms of work station configuration: large areas, central islands...

Extremely comfortable and resistant connected tiles.

Tiles can be assembled and cut every 30cm.

Yellow beveled edges (optional, 6,5cm width), female or male, for improved visibility and safety.



Applications

Industrial device or work station needing a tailor-made design.

Characteristics

	Antifatigue mat	Duckboard
- Version	SBR rubber / nitrile (25%)	Natural rubber
- Material		
- Environment	Dry or wet indoor	
	Limited projections of chemicals or oils	
	Resists to welding spatters and hot spillages	
- Surface	Textured	Smooth with drainage holes
- Color	Black/yellow	
- Edges	Yellow beveled edges (optional)	
- Thickness	16mm	16mm (Ø22mm holes)
- Operating temperature	-20 to +160°C	-20 to +160°C
- Guarantee*	1 year	1 year

Cleaning

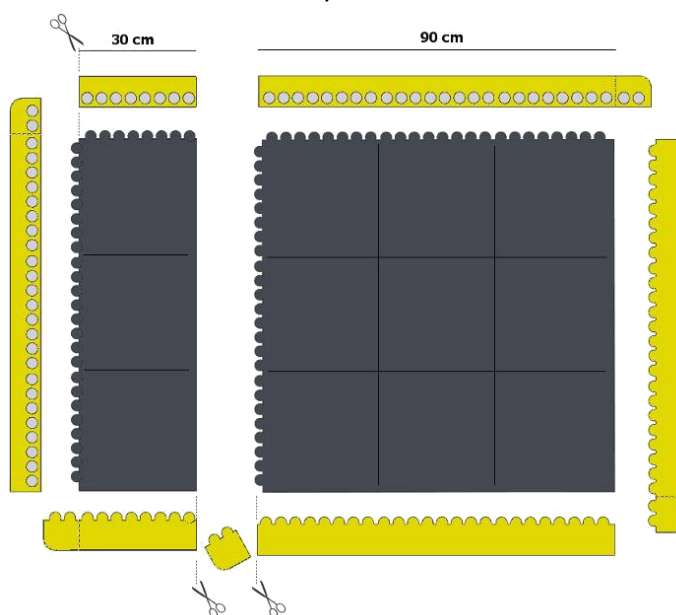
- Pressure hose, with detergents if needed

Certification

- EN 13552 category R10

Packaging

- Unit
- Weight
 - o 90x90cm tile 11,15kg
 - o 90x90cm duckboard 9,95kg
 - o Female/male edge 1kg
- Pallet
 - o 90x90cm tile 16 units
 - o 90x90cm duckboard 16 units
 - o Female/male edge 100 units



* Guarantee does apply only in case of standard use (no weight other than persons walking on it, not stretched, pulled...) and in conditions of use and cleaning specified above