



The Timken Company

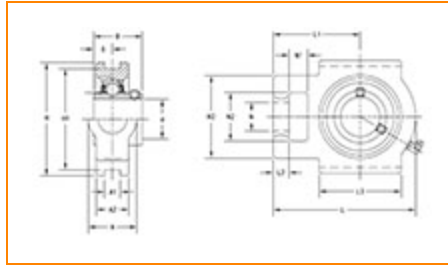
4500 Mt Pleasant St. NW

N. Canton, OH 44720

Phone: (234) 262-3000

E-Mail: CustomerCAD@timken.com • **Web site:** www.timken.com

Part Number UCT313, UCT 300 Take-Up Mounted Bearings - Set Screw Locking



[Specifications](#) | [Dimensions](#) | [Basic Load Ratings](#)

Specifications

Bearing Number	UC313
Shaft Size d	65 mm
Locking Style	Set Screw Locking
Housing Construction	Take-Up

Dimensions

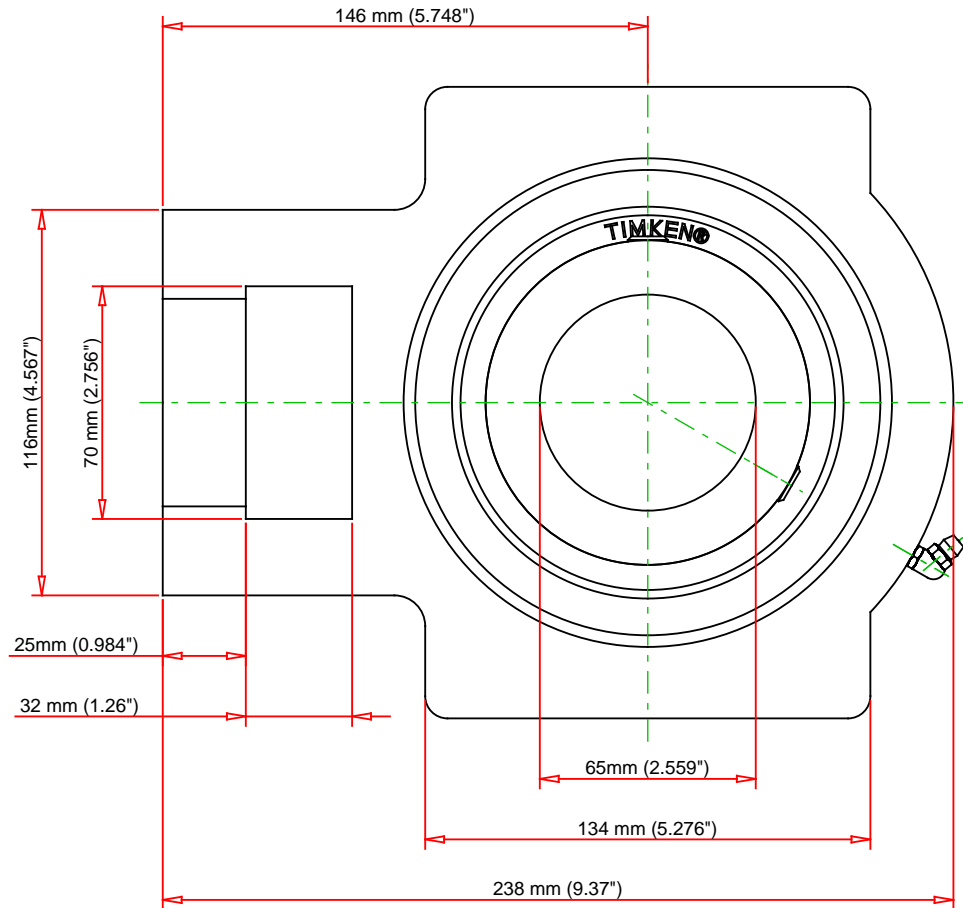
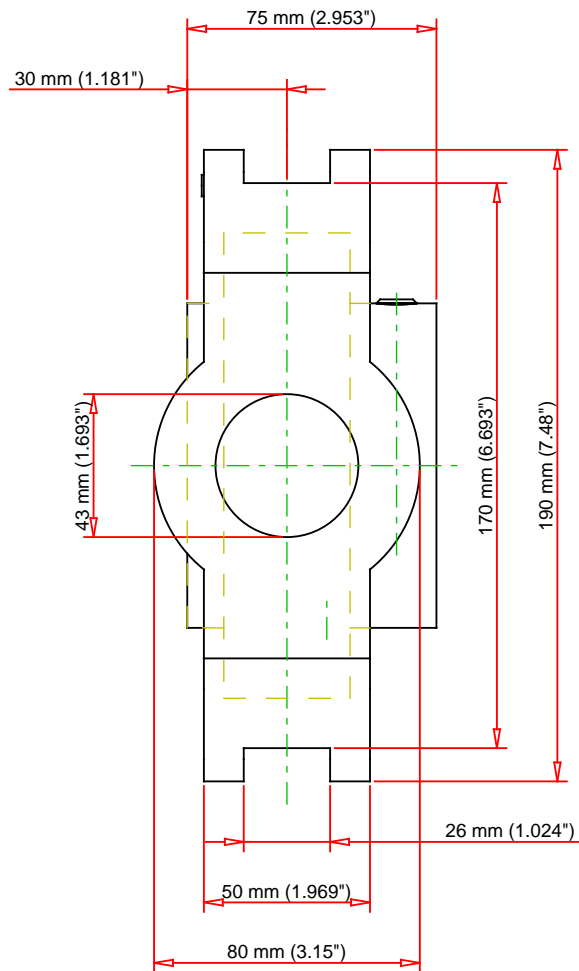
Housing Width A	80 mm
Slot Width A1	26 mm
Socket Width A2	50 mm
Total Height H	190 mm
Pitch Height H1	170 mm



Height H2	116 mm
Total Length L	238 mm
Shaft Length L1	146 mm
Dimension L2	25 mm
Slot Length L3	134 mm
Adjustment Screw Bore N	43 mm
Opening Width N1	32 mm
Opening Height N2	70 mm
Inner Ring Width B	75 mm
Center of Bearing from End S	30 mm
Grease Nipple Size	B-R1/8

Basic Load Ratings

Static Load Rating	59900 N
Dynamic Load Rating	92700 N



Bearing Number	UC313			
Load Ratings - C _r	20840	lbf	92700	N
Load Ratings - C _{0r}	13466	lbf	59900	N
Weight	20.5	lb	9.3	kg

TIMKEN

THE TIMKEN COMPANY
NORTH CANTON, OHIO USA

UCT313

UCT 300 Take-Up Mounted Bearings - Set
Screw Locking

Every reasonable effort has been made to ensure the accuracy of the information contained in this writing, but no liability is accepted for errors, omissions or for any other reason.

FOR DISCUSSION ONLY